

Eastland Ranch

Family of Plans

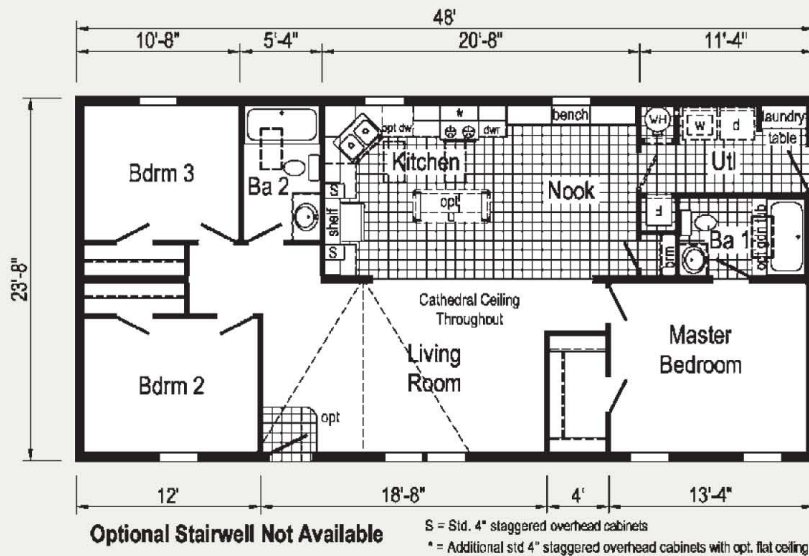


2013

Photos Top to Bottom:
A3159A, A3157A & A3138A
Some Features may be Optional

A2103A 2448

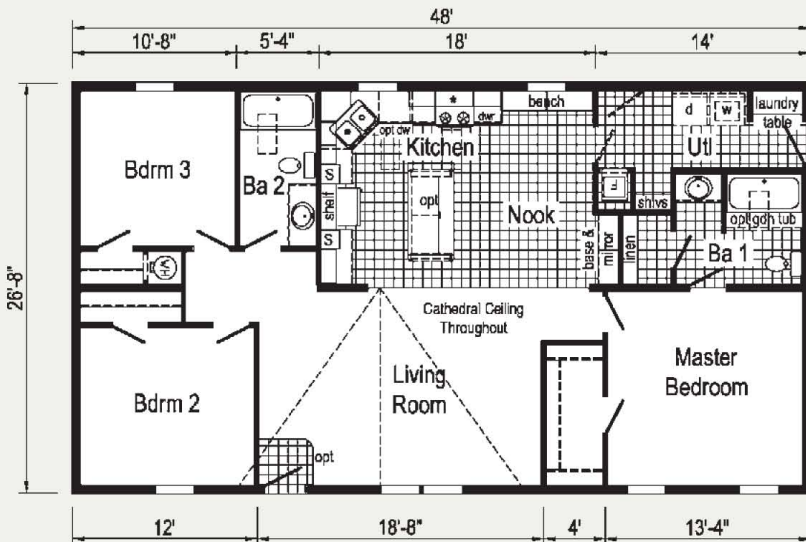
Approx. 1136 Sq. Ft.



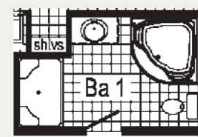
A3138A 2848

Approx. 1280 Sq. Ft.

Some Features may be Optional



S = Std. 4" staggered overhead cabinets
 * = Additional std 4" staggered overhead cabinets with opt. flat ceiling



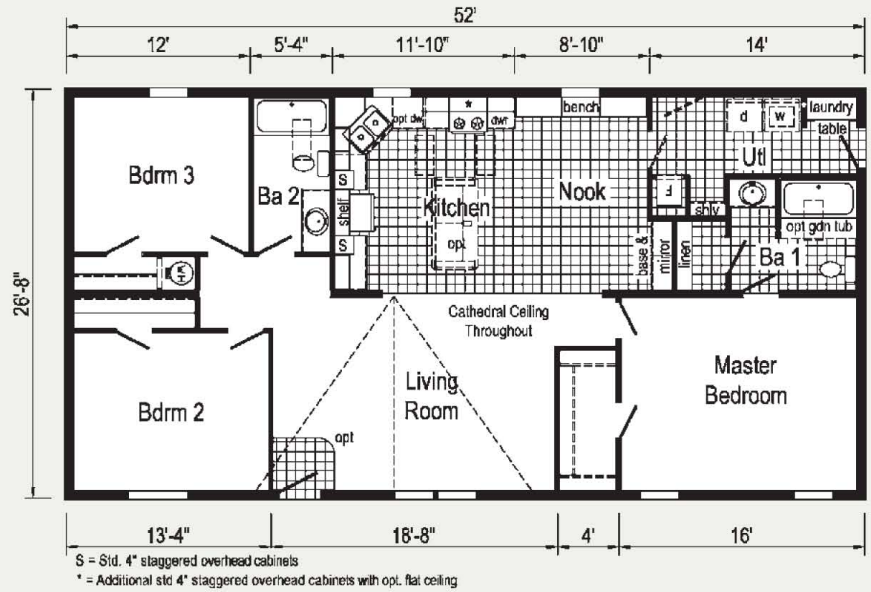
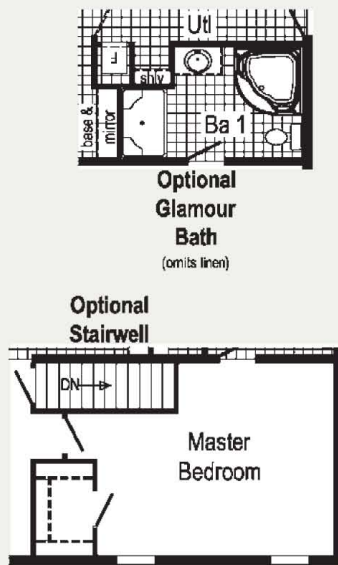
Optional Glamour Bath
 (omits linen)



Optional Stairwell

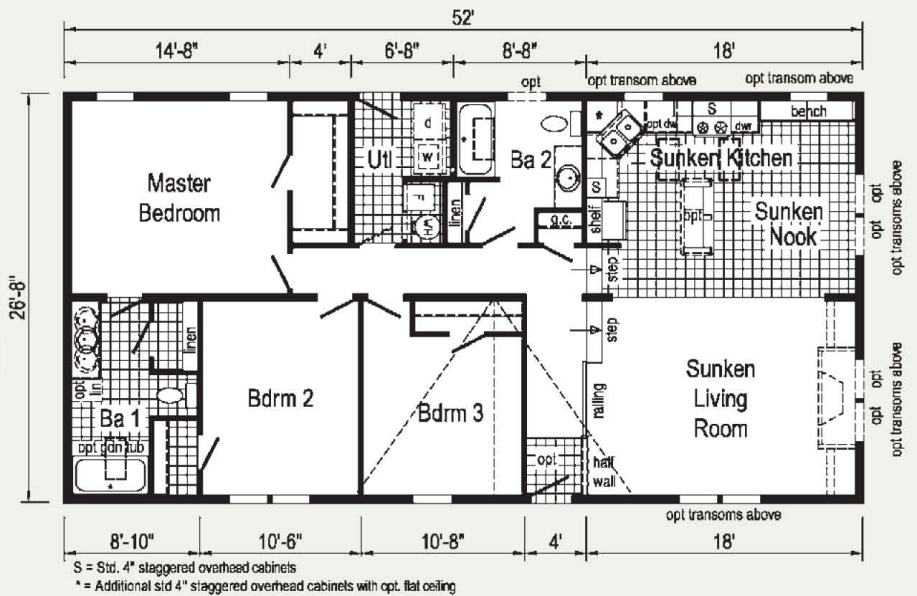
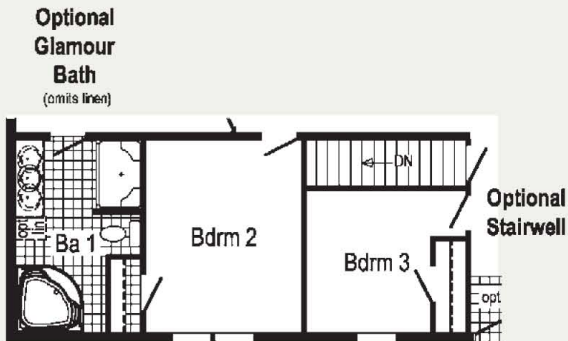
A3141A 2852

Approx. 1387 Sq. Ft.



A3178A 2852

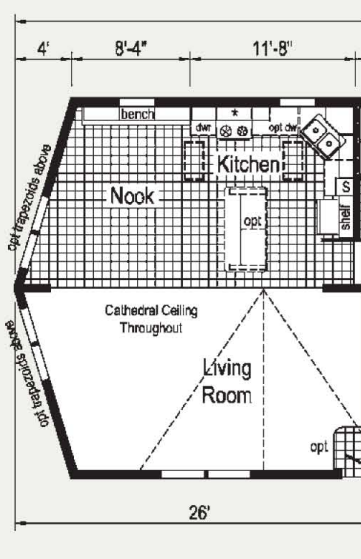
Approx. 1387 Sq. Ft.



A3158A 2852

Approx. 1387 Sq. Ft.

"NEW For 2013"

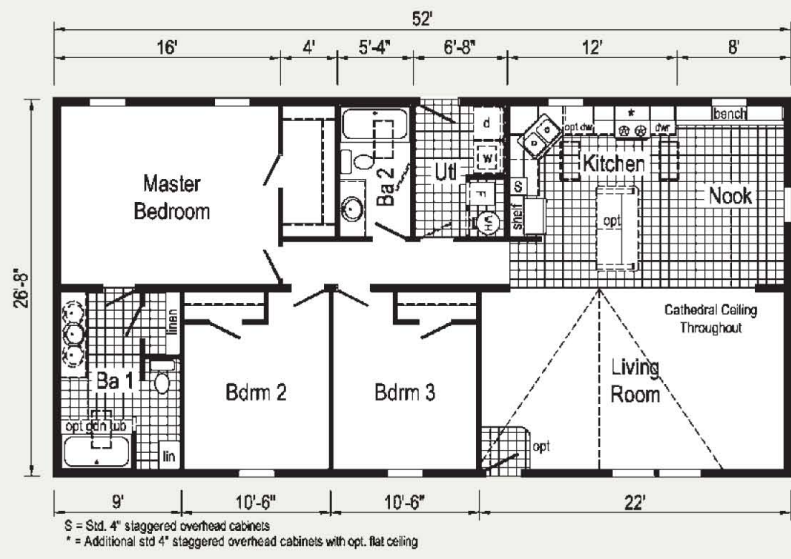


Alternate Prow Roof

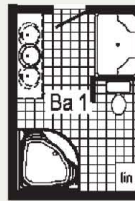
Only available flipped end to end as shown.
Not available with hinged roof.

A3185A 2856

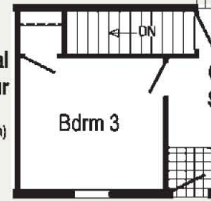
Approx. 1440 Sq. Ft.



S = Std. 4" staggered overhead cabinets
* = Additional std 4" staggered overhead cabinets with opt. flat ceiling



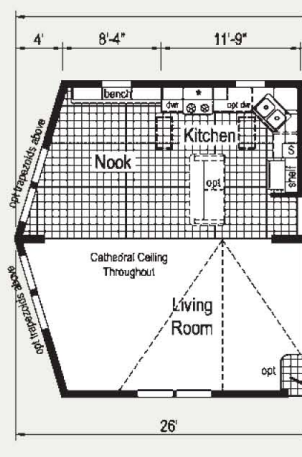
Optional Glamour Bath (omits linen)



Optional Stairwell

M3158A 2852

Approx. 1387 Sq. Ft.

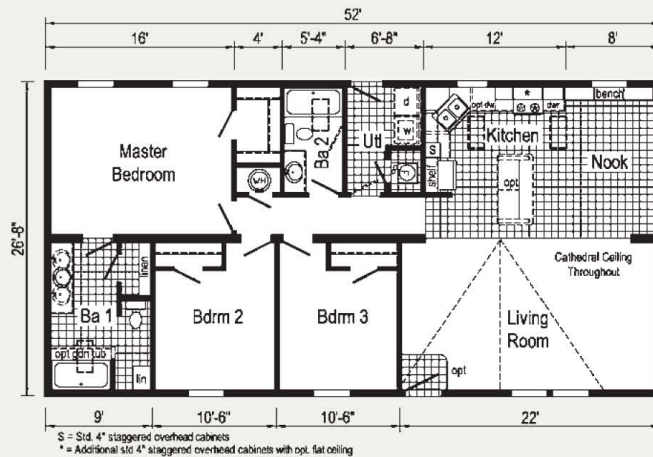


Alternate Prow Roof

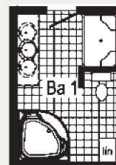
Only available flipped end to end as shown.

M3185A 2856

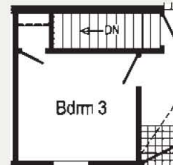
Approx. 1440 Sq. Ft.



S = Std. 4" staggered overhead cabinets
* = Additional std 4" staggered overhead cabinets with opt. flat ceiling



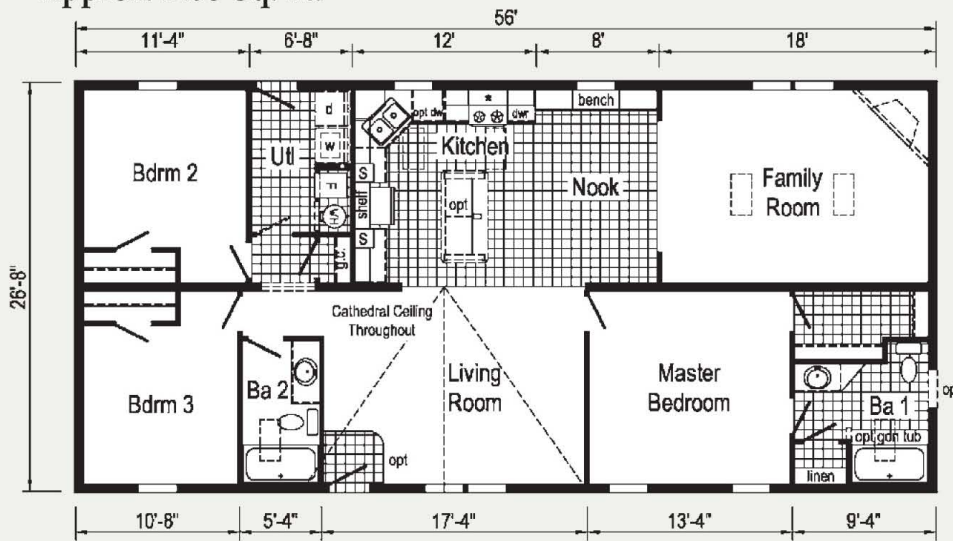
Optional Glamour Bath (omits linen)



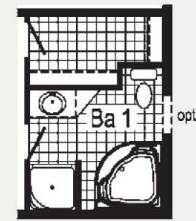
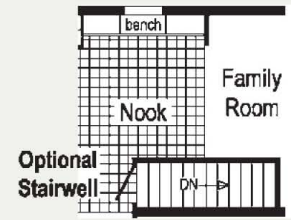
Optional Stairwell

A3157A 2856

Approx. 1493 Sq. Ft.



S = Std. 4" staggered overhead cabinets
 * = Additional std 4" staggered overhead cabinets with opt. flat ceiling



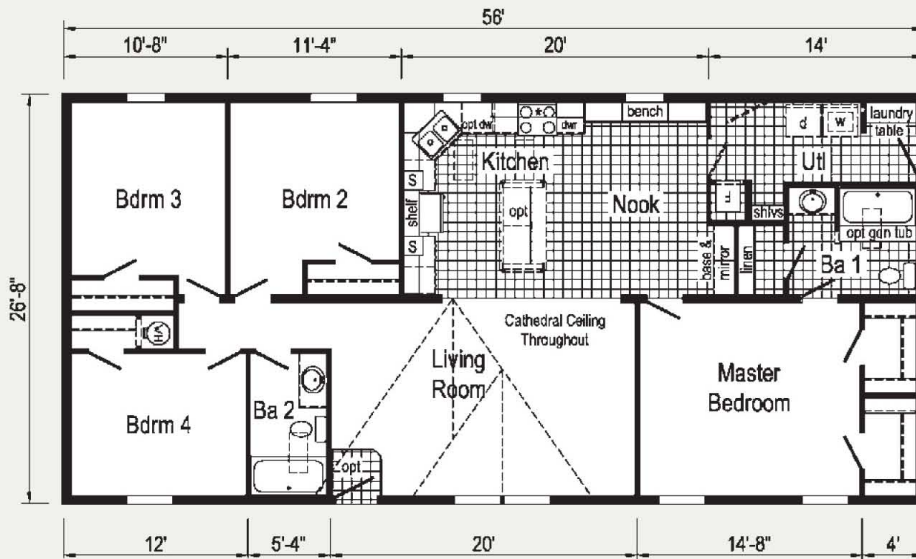
Optional Glamour Bath
 (omits linen)



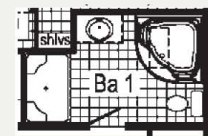
A3159A 2856

Approx. 1493 Sq. Ft.

Some Features may be Optional



S = Std. 4" staggered overhead cabinets
 * = Additional std 4" staggered overhead cabinets with opt. flat ceiling



Optional Glamour Bath
 (omits linen)

Eastland Ranch - HUD Included Features

Interior

Cathedral Ceiling Throughout
Stipple Ceiling
7'0" Sidewall Height
Textured Carpet with Carpet Protector
Rebond Carpet Pad
Tackstrip Carpet Installation
No-Wax Vinyl Floor Coverings by Congoleum
Vinyl Wall Coverings on Gypsum Accent Wall
VOG Wainscot in Primary Area
Glass Light Shades Throughout
Pre-Hung Door Jambs
Mortise Hinges
Metal Interior Passage Sets
Floor Mount Door Stops
Smoke Detectors with Battery Back-Up
Wire Shelving in Guest Closet
Wood Cornice Box with Valance Window Treatments
2 1/4" Ceiling Cove in Main Living Areas



Kitchen

Evermore Custom Cabinetry (KCMA Certified)
Picture Frame Raised Panel Cabinet Doors
Brushed Nickel Cabinet Hardware
Lined Overhead Cabinets
30" Height Overhead Cabinets
4" Staggered Cabinets
Concealed Cabinet Hinges
Deluxe Roller Guide Drawer System
Base and Center Shelves in Base Cabinets
25" High-Pressure Laminate Countertops with Laminate Edging
No-Wax Vinyl Floor Covering by Congoleum

Kitchen (cont.)

Decorative Vinyl Wall Coverings
Stainless Steel Sink - 33x19x7
Empire Chrome Faucet

Appliances

30" Gas Range
Power Range Hood with Light
18 Cubic Foot, No-Frost Refrigerator

Baths

Decorative Vinyl Wall Coverings
60" Tub/Showers
Framed Mirrors
Furniture Style Vanity in Master Bath
One-Piece Fiberglass Shower with Glass Door in Glamour Baths
Corner Tub in Glamour Baths
1.6 Gallon Per Flush Toilets
Vitreous China Stool, Tank and Lid
High-Pressure Laminate Countertops with Laminate Edging
Lighted Vent Fan in Each Bath
Picture Frame Raised Panel Cabinet Doors
Brushed Nickel Cabinet Hardware
Concealed Cabinet Hinges
Base Shelf in Vanities
33" High Vanities
Utopia Chrome Faucets

Bedrooms

Switched Receptacle
Vinyl Wall Coverings in all Bedrooms
Egress Window Each Bedroom
Wire Shelving in Wardrobes
Switched Light in All Walk-In Closets

Utilities

Washer and Dryer Area
100 AMP Electrical Service
30 Gallon Electric Water Heater with Pan Gas Furnace
Air Exchanger System for Furnace

Utilities (cont.)

Aluminum Heat Ducts
In-Floor Cross-Over Heating System
Copper Wiring Throughout
Main Water Line Shut-Off Valve
Air Conditioning Thermostat with 5-Wires

Insulation

R-14 Fiberglass Insulation in Floor
R-19 Fiberglass Insulation in Walls
R-28 Avg. Blown Insulation in Ceiling

Exterior

White Coach Light at Front Door
One GFI-Protected Exterior Receptacle
Vinyl Dutch Lap Siding
Sheathing Board Under Siding
Shingle Roof with Fixed Eaves
Ridgevent Roof Ventilation System
34x76 House-Type Front Door with Storm Door
34x76 House-Type Rear Door
Vinyl Insulated Windows
12" Louvered Shutters on Front Door Side

Construction

2x6 Transverse Floor System - 28 Wide
2x8 Transverse Floor System - 32 Wide
2x6 Exterior Walls on 16" Centers**
3/4" T&G OSB Floor Decking
20# Roof Load

***NOTE: Spacing for Framing Members may vary due to Design Requirements.*

**10 YEAR LIMITED
STRUCTURAL WARRANTY**

MHWC
MANUFACTURED/HOUSING/WARRANTY/CORPORATION®



Patriot Home Sales, Inc.
3517 Lincoln Hwy. East
Kinzers, PA 17535
Phone: (717) 442 - 8868
Email: sales@patriothomes.biz
Web: www.patriothomes.biz

Your purchase contract including options is with your retailer who is an independent contractor, not our agent, and is responsible totally for any alterations, exchanges, additions or attachments made in or to your home.