

Model SN104A

See Page 3

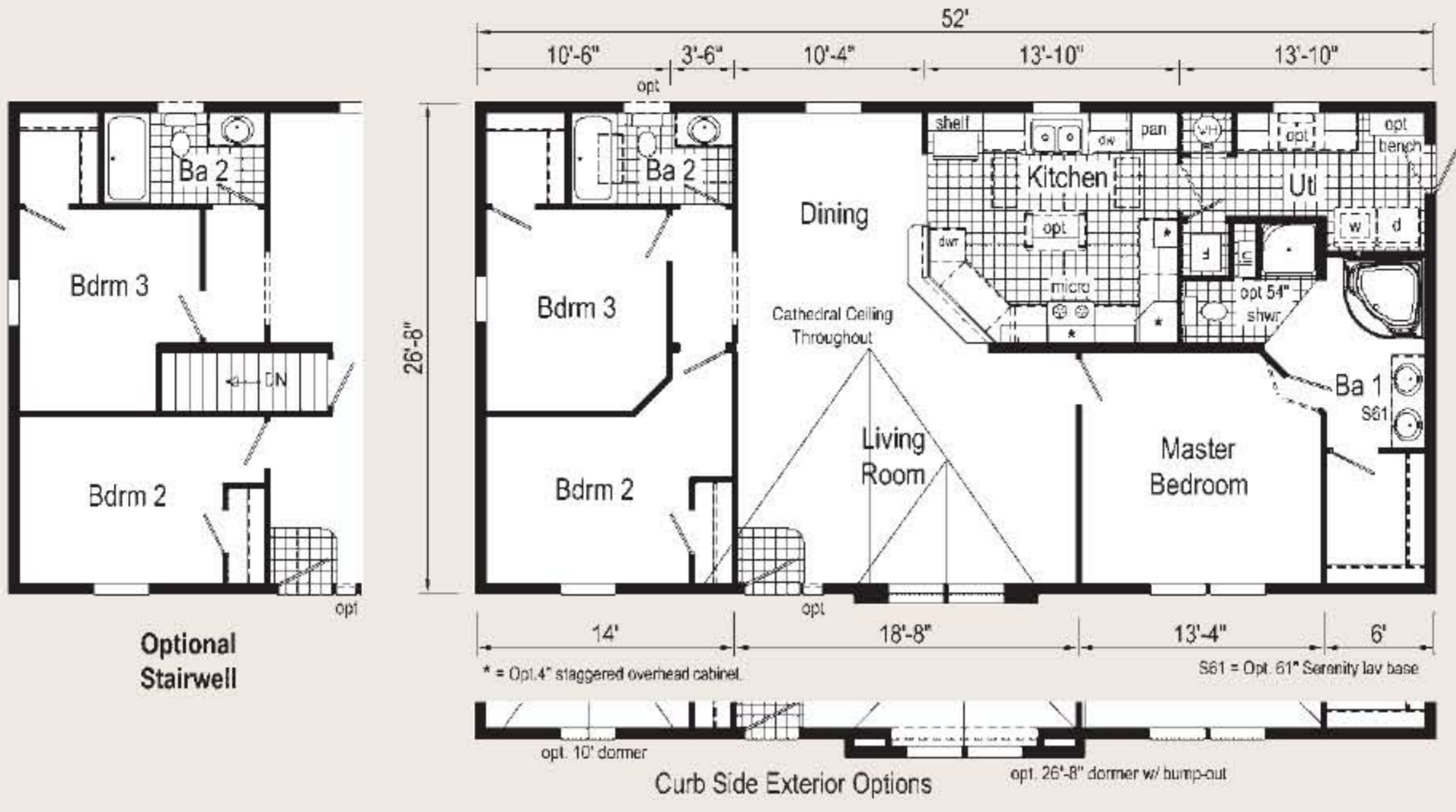
Some Features may be Optional



Stonebridge

ranch homes

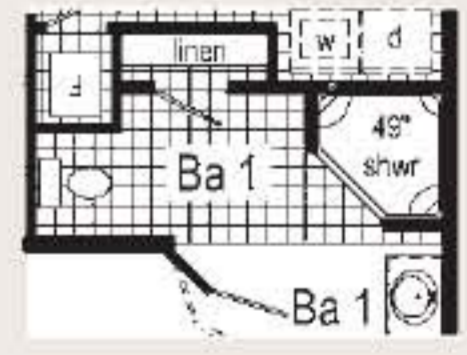
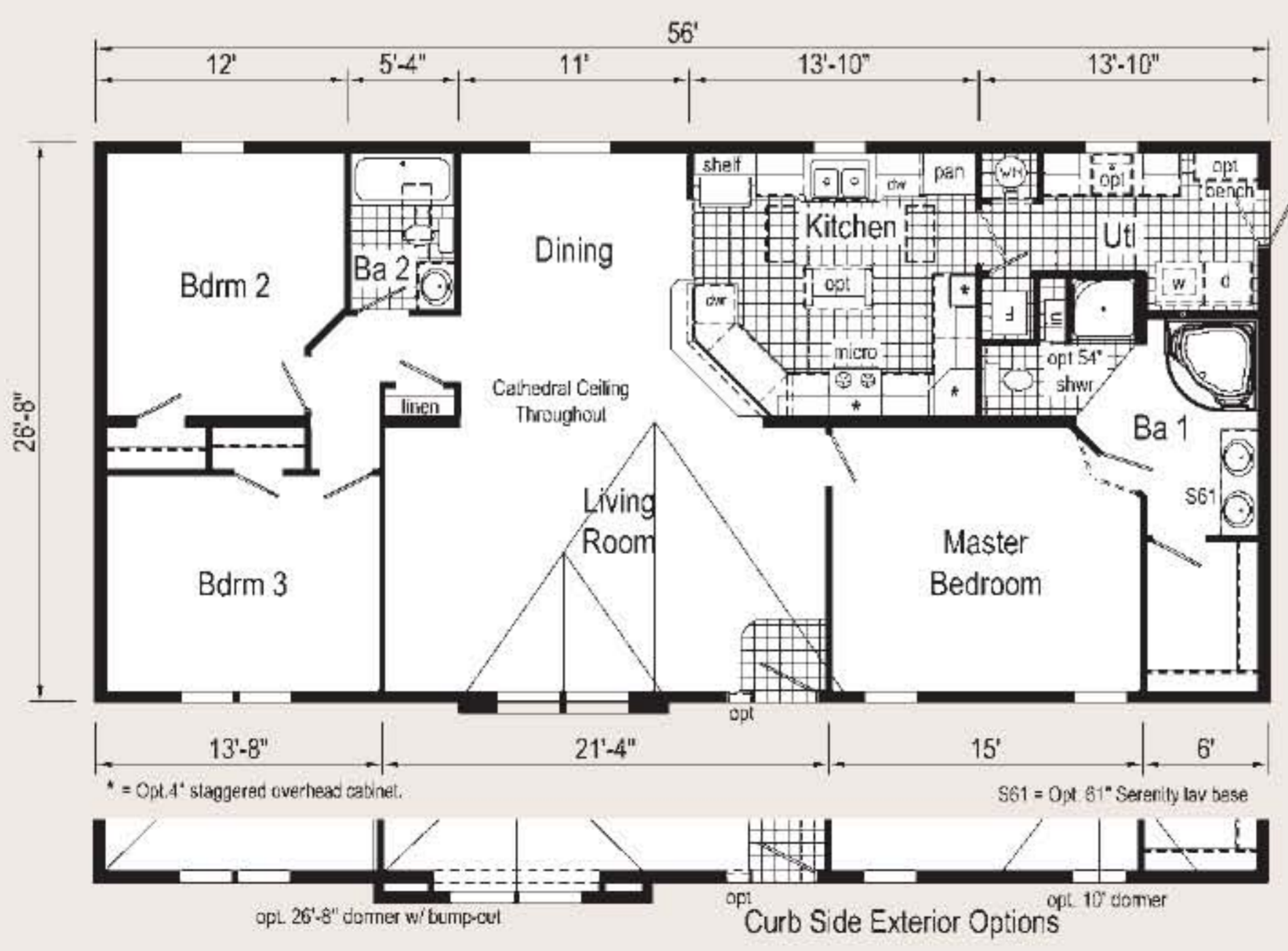

COLONY
Factory Crafted Homes.



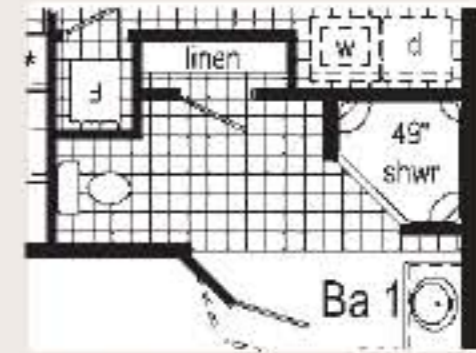
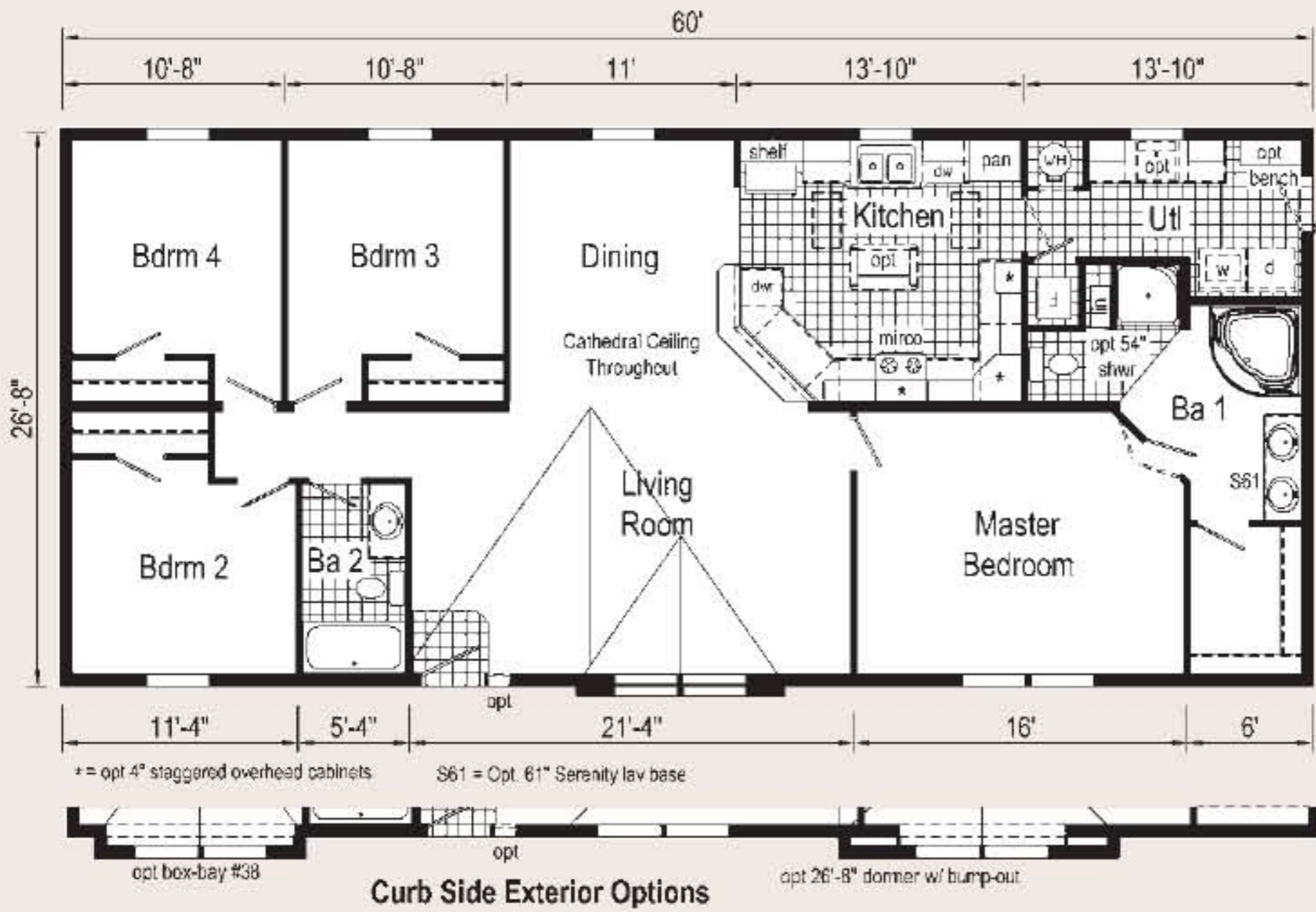
sn101a 2852
Approx 1387 Sq Ft



sn102a 2856
Approx 1493 Sq Ft



sn103a 2860
Approx 1600 Sq Ft

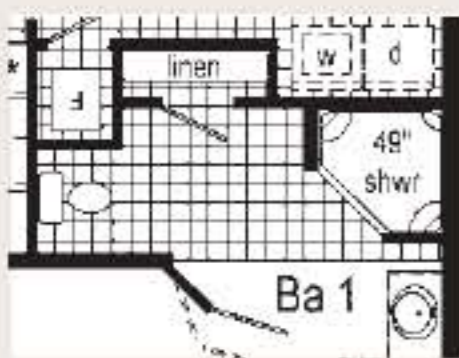
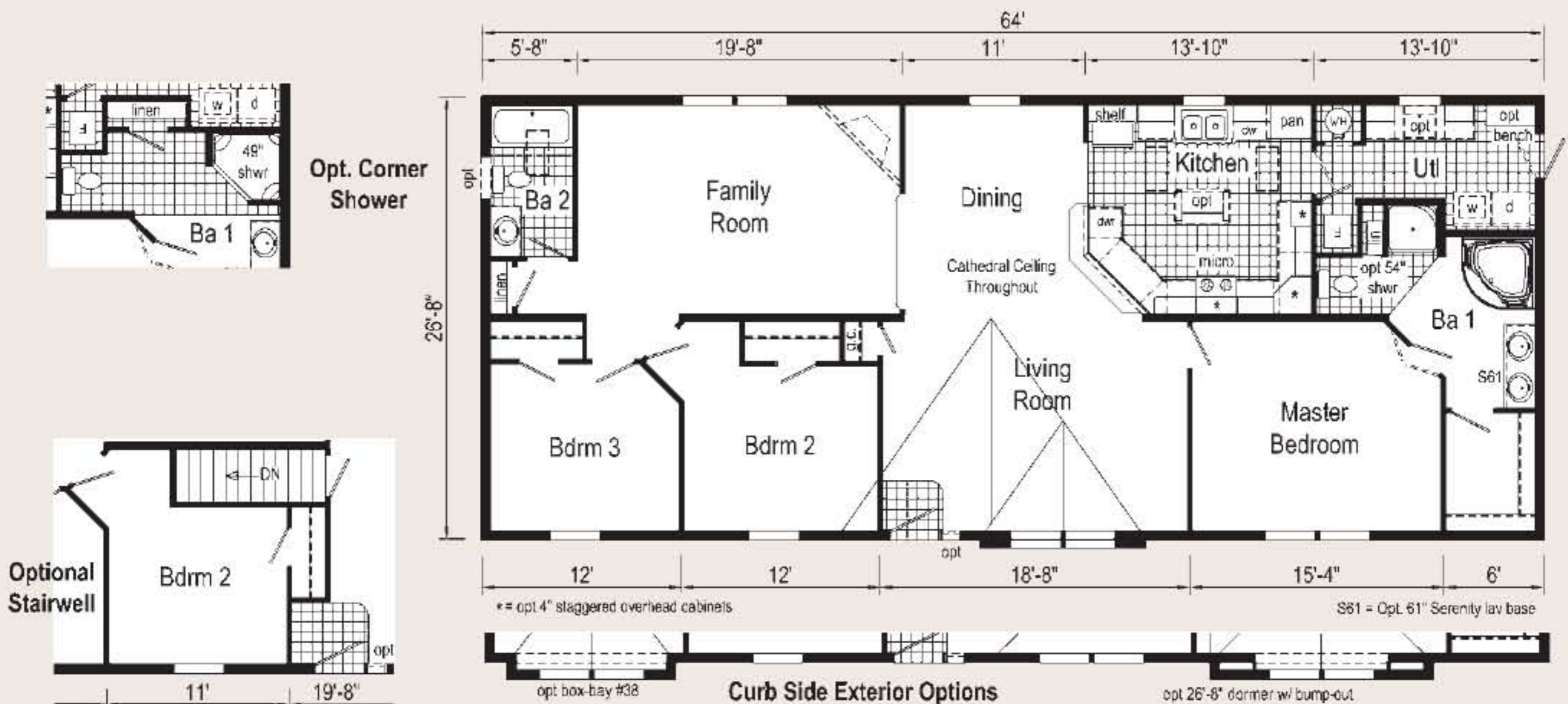


Opt. Corner Shower

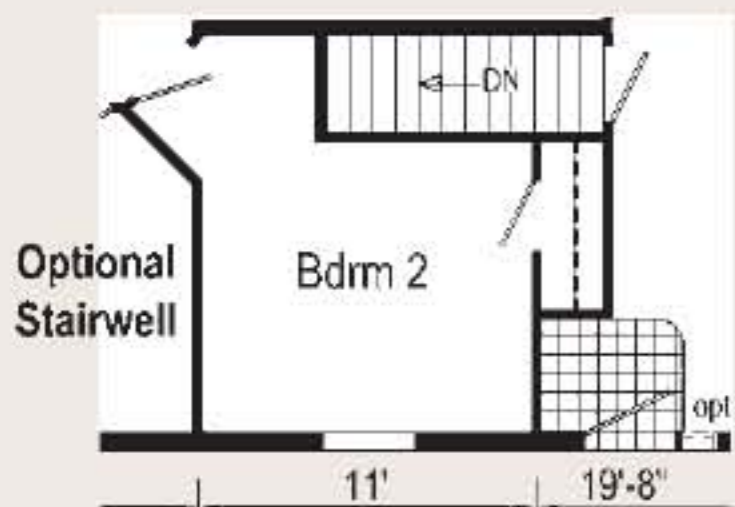


Optional Stairwell

sn104a 2864
Approx 1707 Sq Ft



Opt. Corner Shower



Optional Stairwell



sn104a photos
See page 3

*Some Features may
be Optional*

*More Photos Online:
www.colony-homes.com*



Kitchen



Kitchen



Family Room



Master Bathroom



sn101a photos
See page 2

*Some Features may
be Optional*

*More Photos Online:
www.colony-homes.com*



Kitchen



Kitchen



Master Bathroom



Master Bathroom

stonebridge ranch homes

Included Features - 10 Year Limited Structural Warranty

INTERIOR

Cathedral Ceiling Throughout
Stipple Ceiling
7'0" Sidewall Height
Textured Carpet with R2X Soil and Stain Resistance
Rebond Carpet Pad
Tackstrip Carpet Installation
Foyer Entry with Vinyl Floors
No-Wax Vinyl Floor Coverings by Congoleum
Vinyl Wall Coverings on Gypsum
6-Arm Brushed Nickel Dining Room Light
Alabaster Glass Pendant Nook Light
Glass Light Shades Throughout
Pre-Hung Door Jambs
Pinned Mortise Hinges
Metal Interior Passage Sets
Floor Mount Door Stops
Smoke Detectors with Battery Back-Up
Wire Shelving in Guest Closet
Designer-Coordinated Window Treatments
6-Panel Woodgrain Interior Doors

KITCHEN

KCMA Certified Modular Cabinetry
Seneca Oak Cabinetry
Hardwood Flat Panel Cabinet Doors
Upgrade Cabinet Hardware
Concealed Hinges on All Cabinets
Crown Moulding on Overhead Cabinets
Lined Overhead Cabinets
30" Height Overhead Cabinets
Adjustable Shelves in Overhead Cabinets
Deluxe Roller Guide Drawer System
Drawer Over Door Base Cabinets
Base and Center Shelves in Base Cabinets
Under Cabinet Molding on Overhead Cabinets
Extended Sink Cabinet
High-Pressure Laminate Countertops with Ceramic Edging
4" Laminate Backsplash
No-Wax Vinyl Floor Coverings by Congoleum
Decorative Vinyl Wall Coverings
Stainless Steel Sink - 33x22x8
High Rise Brushed Nickel Faucet

APPLIANCES

30" Deluxe Gas Range
21 Cubic Foot, 2-Door Frost Free Refrigerator
Built-In Microwave Over Range
Dishwasher

BATHS

Decorative Vinyl Wall Coverings
60" Fiberglass Tub/Showers
One-Piece Fiberglass Shower with Glass Door in Master Baths
Acrylic Corner Tub in Master Baths
Deluxe Overdrape at 60" Tubs
1.6 Gallon Per Flush Elongated Toilets
Vitreous China Sinks
Double Sinks in Master Baths
Vitreous China Stool, Tank and Lid
High-Pressure Laminate Countertops with Laminate Edging
4" Laminate Backsplash at Vanities
Lighted Vent Fan in Each Bath
Hardwood Flat Panel Cabinet Doors
Upgrade Cabinet Hardware
Base Shelf in Vanities
33" High Vanities
Empire Brushed Nickel Faucets

BEDROOMS

Ceiling Lights
Vinyl Wall Coverings in all Bedrooms
Egress Window Each Bedroom
Wire Shelving in Wardrobes
Switched Light in All Walk-In Closets

UTILITIES

Washer and Dryer Area
100 AMP Electrical Service
Plumb and Wire for Washer
Wire and Vent for Dryer
40 Gallon Electric Water Heater with Pan
Auto Ignition Gas Furnace:
#M1-MB077ABW - 56 and Under
#M1-MB090ABW - 60 and Over
6-Panel Woodgrain Furnace Door
Air Exchanger System for Furnace

UTILITIES (cont.)

Aluminum Heat Ducts
Perimeter Heat System
In-Floor Cross-Over Heating System
Copper Wiring Throughout
Main Water Line Shut-Off Valve
Water Shut-Off Valves where Accessible
Programmable Thermostat
One Exterior Water Faucet

INSULATION

R-22 Fiberglass Insulation in Floor
R-19 Fiberglass Insulation in Walls
R-31 Avg. Blown Insulation in Ceiling

EXTERIOR

Twin Peak Dormer with Bump-Out Bay
Brushed Nickel Coach Light at Front Door
Brushed Nickel Square Lantern Light at Rear Door
One GFI-Protected Exterior Receptacle
Vinyl Dutch Lap Siding
Sheathing Board Under Siding
Shingle Roof with Fixed Eaves
Ridgevent Roof Ventilation System
38x76 Fiberglass Front Door with 1/2 Circle Window and Deadbolt Lock
34x76 9-Lite Cottage Outswing Rear Door
Vinyl Insulated Windows with Grids and Low-E Glass
12" Louvered Shutters on Front Door Side

CONSTRUCTION

***Energy Star Qualified on Selected Models**
2x6 Transverse Floor System
2x6 Exterior Walls on 16" Centers**
30# Roof Load
Recessed Frame Design

****NOTE: Spacing for Framing Members may vary due to Design Requirements.**



***NOTE: Energy Star qualified Home is not available in Total Electric Homes**

***Selected Stonebridge Ranch models can be ENERGY STAR Qualified and be ENERGY STAR labeled after undergoing a field site inspection conducted by a manufacturer's field representative following site installation by our Authorized Independent Retailers.**

MHWC
MANUFACTURED HOUSING WARRANTY CORPORATION



**COLONY**
Factory Crafted Homes

Patriot Home Sales, Inc.

**3517 Lincoln Hwy. East
Kinzers, PA 17535**

Phone: (717) 442 - 8868

Email: sales@patriothomes.biz

All descriptive representations of the products on this brochure are believed to be correct at the time of publication. However, due to continued product improvement and changes in suppliers design and production, accuracy cannot be guaranteed. Therefore, equipment colors, material specifications, prices and model availability are subject to change without notice.

Your purchase contract including options is with your retailer who is an independent contractor, not our agent, and is responsible totally for any alterations, exchanges, additions or attachments made in or to your home. AP106366 7.5M 8/11