

Cornerstone *Modular Ranch*


COLONY
Factory Crafted Homes®



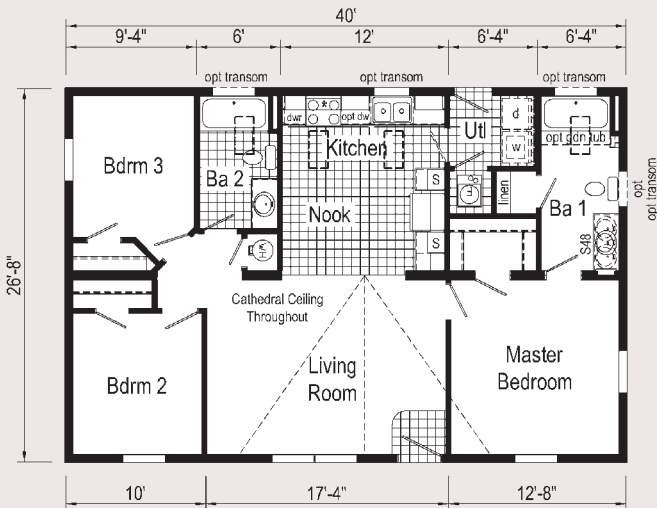
Photos Top to Bottom:
CN136A, CW101A & CN157A
Some Features may be Optional

Table of Contents

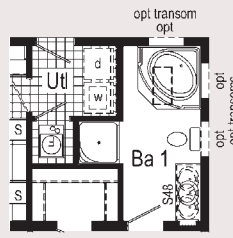
<u>Page</u>	<u>Model</u>	<u>HUD Ref</u>	<u>Size</u>	<u>Sq. Ft.</u>	<u>Page</u>	<u>Model</u>	<u>HUD Ref</u>	<u>Size</u>	<u>Sq. Ft.</u>
3	CN261A	(A3106A)	2840	1067	18	CN269A	(A3129A)	2860	1600
3	CN274A	(A3156A)	2840	1067	18	CN277A	(A3160A)	2860	1600
3	CN101A	(TL513A)	2844	1173	19	CN283A	(SN103A)	2860	1600
4	CN262A	(A3107A)	2844	1173	19	CN289A	(TL603A)	2860	1600
4	CN280A	(A3162A)	2844	1173	20	CN135A	(DE654A)	2864	1707
4	CN103A	(TL523A)	2848	1280	20	CN136A	(DE655A)	2864	1707
5	CN238A	(A3138A)	2848	1280	21	CN140A	(TL534A)	2864	1707
5	CN252A	(DE673A)	2848	1280	21	CN142A	(TL540A)	2864	1707
5	CN263A	(A3108A)	2848	1280	22	CN194A	(DE634A)	2864	1707
6	CN105A	(DE617A)	2852	1387	22	CN197A	(DE656A)	2864	1707
6	CN108A	(TL527A)	2852	1349	23	CN206A	(DE640A)	2864	1707
7	CN190A	(TL562A)	2852	1387	23	CN213A	(DE641A)	2864	1707
7	CN264A	(A3109A)	2852	1387	24	CN216A	(TL572A)	2864	1707
7	CN271A	(A3141A)	2852	1387	24	CN251A	(DE672A)	2864	1649
8	CN281A	(SN101A)	2852	1387	25	CN257A	(TL596A)	2864	1707
8	CN288A	(A3178A)	2852	1387	25	CN258A	(TL597A)	2864	1707
8	CN111A	(TL569A)	2856	1493	25	CN259A	(TL598A)	2864	1707
9	CN115A	(DE630A)	2856	1493	25	CN260A	(TL599A)	2864	1707
9	CN116A	(TL506A)	2856	1493	26	CN284A	(SN104A)	2864	1707
10	CN117A	(TL529A)	2856	1493	26	CN290A	(TL605A)	2864	1707
10	CN193A	(DE633A)	2856	1493	27	CN291A	(DE683A)	2864	1707
10	CN215A	(TL571A)	2856	1493	27	CN133A	(DE657A)	2864/60	1534
11	CN235A	(TL583A)	2856	1493	28	CN155A	(DE631A)	2868	1789
11	CN253A	(TL592A)	2856	1493	28	CN157A	(TL535A)	2868	1773
11	CN254A	(TL593A)	2856	1493	29	CN214A	(DE642A)	2868	1813
11	CN255A	(TL594A)	2856	1493	29	CN266A	(A3120A)	2868	1813
11	CN256A	(TL595A)	2856	1493	30	CN217A	(TL573A)	2872	1920
12	CN272A	(A3146A)	2856	1493	30	CN270A	(A3130A)	2872	1920
12	CN273A	(A3151A)	2856	1404	31	CN165A	(DE615A)	2876	2027
12	CN275A	(A3157A)	2856	1493	31	CN166A	(TL507A)	2876	2027
13	CN276A	(A3159A)	2856	1493	32	CN167A	(TL522A)	2876	2027
13	CN282A	(SN102A)	2856	1493	32	CN192A	(TL564A)	2876	2027
14	CN287A	(A3177A)	2856	1493	33	CN218A	(TL574A)	2876	2027
14	CN120A	(TL579A)	2860	1600	33	CN164A	(none)	2876/72	1926
15	CN124A	(none)	2860	1552	34	CW101A	(TX510A)	3260	1800
15	CN127A	(TL524A)	2860	1600	35	Included Features			
16	CN128A	(TL525A)	2860	1498					
16	CN191A	(TL563A)	2860	1600					
17	CN228A	(TL580A)	2860	1600					
17	CN230A	(TL582A)	2860	1600					

CN261A 2840 (A3106A)

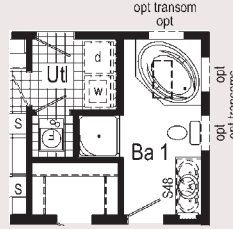
Approx. 1067 Sq. Ft.



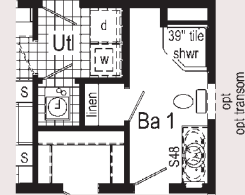
Opt. transom window(s) available with opt. 9' ceiling only. S = Std. 4" staggered cabinet/opt 12" staggered S48 = Opt. 48" Serenity lav base * = Opt. staggered overhead cabinet w/opt. flat ceiling.



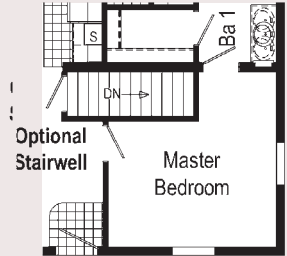
Optional Glamour Bath (omits linen)



Opt. Soaker Tub (omits linen)



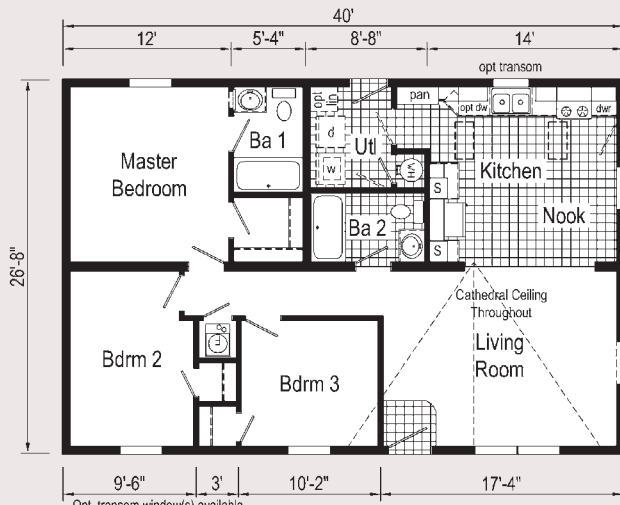
Opt. 39" Tile Corner Shower



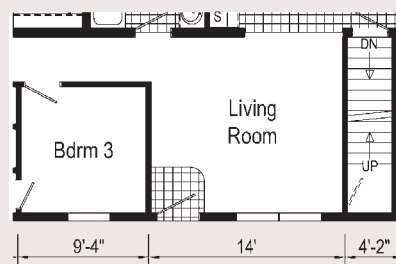
Optional Stairwell

CN274A 2840 (A3156A)

Approx. 1067 Sq. Ft.



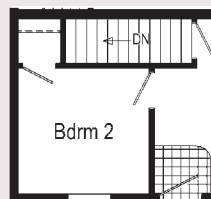
Opt. transom window(s) available with opt. 9' ceiling only. S = Std. 4" staggered cabinet/opt 12" staggered



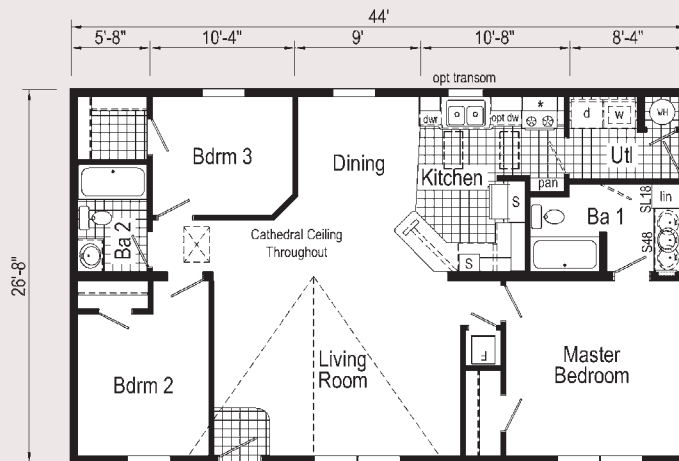
Optional Stairwell

CN101A 2844 (TL513A)

Approx. 1173 Sq. Ft.



Optional Stairwell



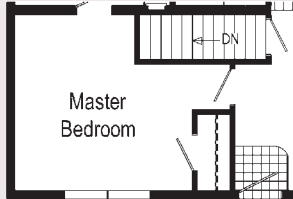
Opt. transom window(s) available with opt. 9' ceiling only. S48 = Opt. 48" Serenity lav base SL18 = Opt. 18" Serenity linen * = Opt. staggered overhead cabinet w/opt. flat ceiling. S = Std. 4" staggered cabinet / opt 12" staggered



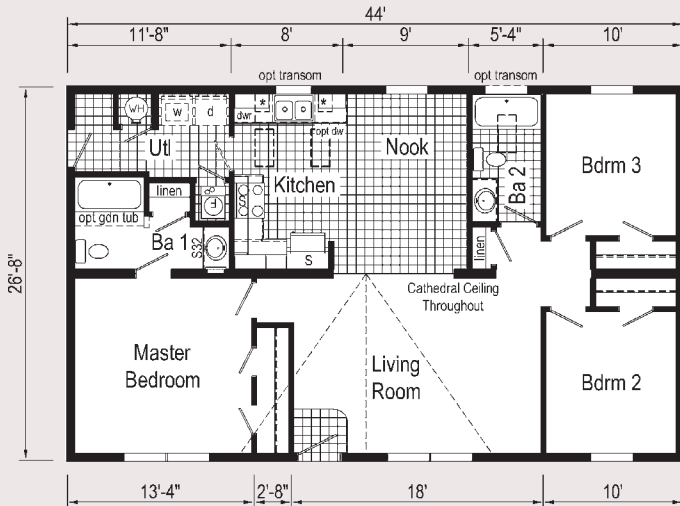
Curb Side Exterior Options opt. 26'-8" dormer w/ bump-out

CN262A 2844 (A3107A)

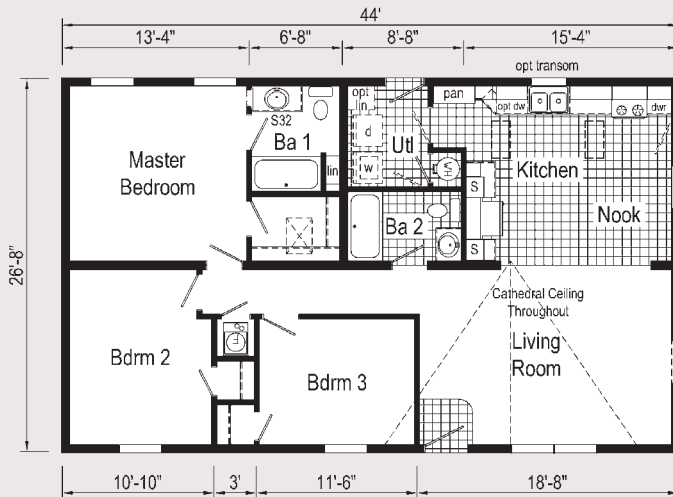
Approx. 1173 Sq. Ft.



Optional Stairwell



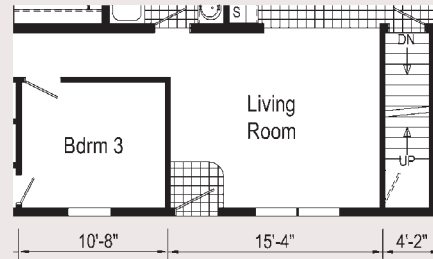
Opt. transom window(s) available with opt. 9' ceiling only. S = Std. 4" staggered cabinet/opt 12" staggered S32 = Opt. 32" Serenity lav base * = Opt. staggered overhead cabinet w/opt. flat ceiling.



Opt. transom window(s) available with opt. 9' ceiling only. S = Std. 4" staggered cabinet/opt 12" staggered S32 = Opt. 32" Serenity lav base

CN280A 2844 (A3162A)

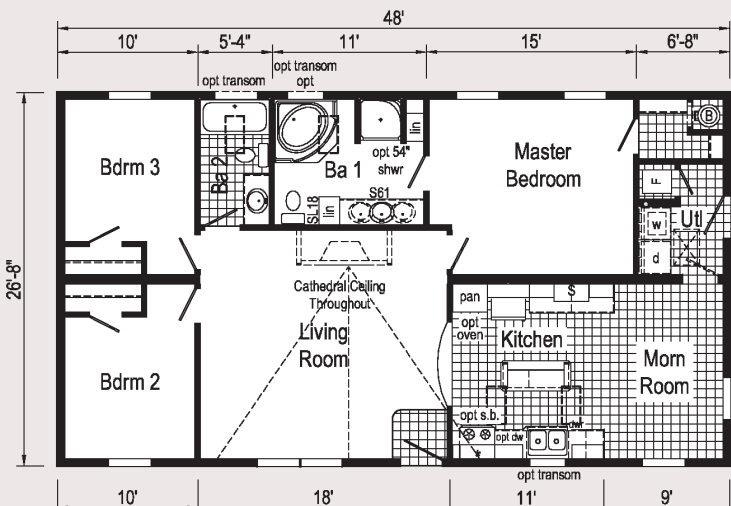
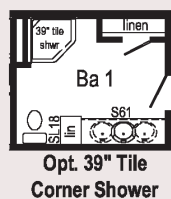
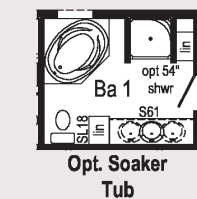
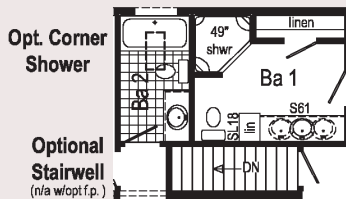
Approx. 1173 Sq. Ft.



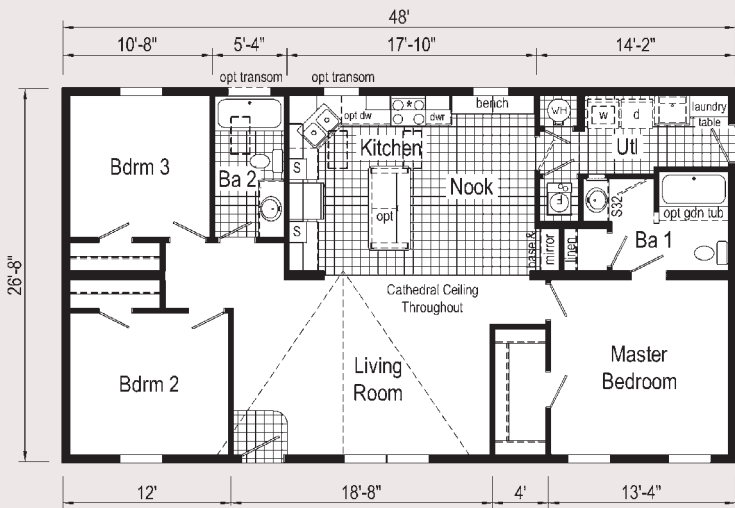
Optional Stairwell

CN103A 2848 (TL523A)

Approx. 1280 Sq. Ft.



Opt. transom window(s) available with opt. 9' ceiling only. SL18 = Opt. 18" Serenity linen S61 = Opt. 61" Serenity lav base * = Opt. staggered overhead cabinet w/opt. flat ceiling. Ⓟ = Water heater cavity must be altered, relocated or omitted for the state of Ohio. S = Std. 4" staggered cabinet / opt 12" staggered

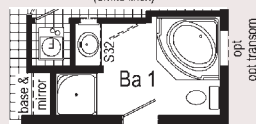


Opt. transom window(s) available with opt. 9' ceiling only. S = Std. 4" staggered cabinet/opt 12" staggered S32 = Opt. 32" Serenity lav base * = Opt. staggered overhead cabinet w/opt. flat ceiling

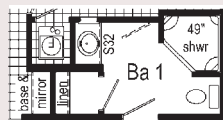
CN238A 2848 (A3138A)

Approx. 1280 Sq. Ft.

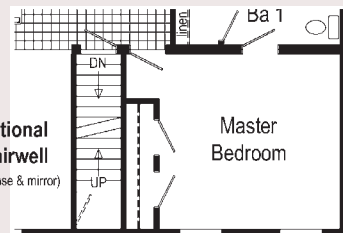
Optional Glamour Bath (omits linen)



Opt. Corner Shower



Optional Stairwell (omits base & mirror)



16'-6" | 3'-6" | 2'-4" | 13'-8"

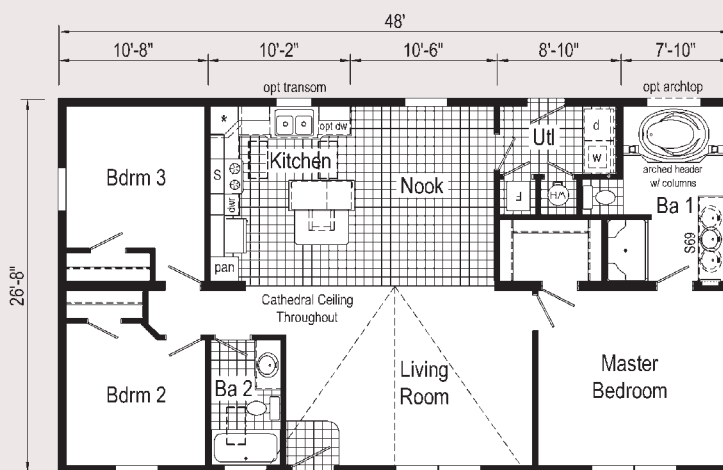


Optional Stairwell

Reconfigures Kitchen Design, Omits Island

CN252A 2848 (DE673A)

Approx. 1280 Sq. Ft.



Opt. transom window(s) available with opt. 9' ceiling only. S = Std. 4" staggered cabinet/opt 12" staggered S69 = Opt. 69" Serenity lav base * = Opt. staggered overhead cabinet w/opt. flat ceiling.

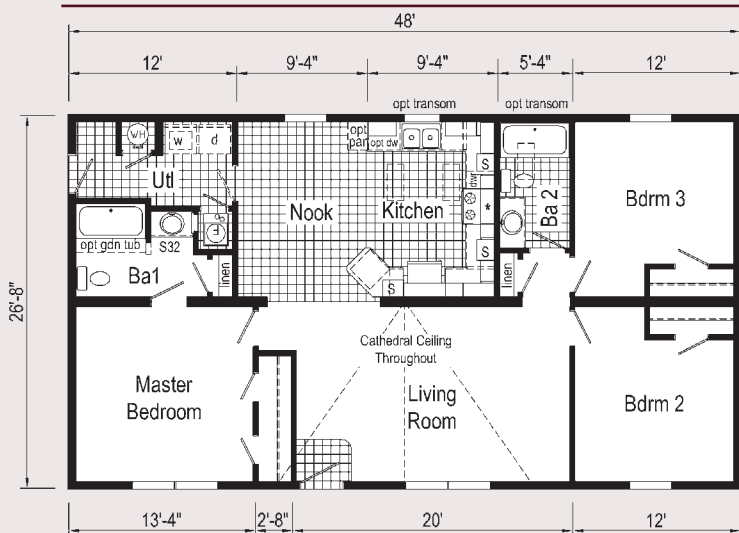
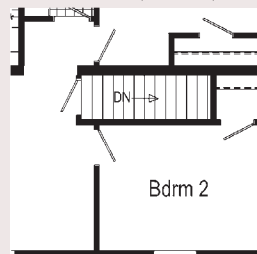


Opt 10' dormer | Curb Side Exterior Options | Opt 26'-8" dormer w/ bump-out

CN263A 2848 (A3108A)

Approx. 1280 Sq. Ft.

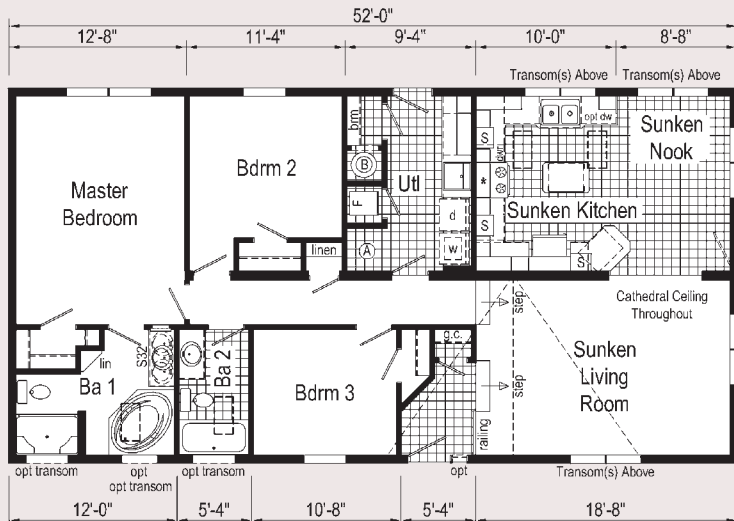
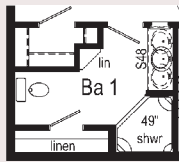
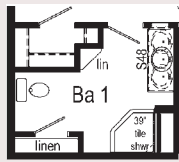
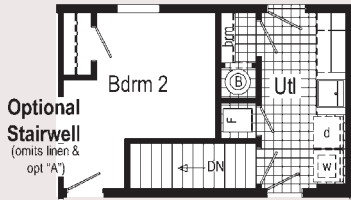
Optional Stairwell (omits linen)



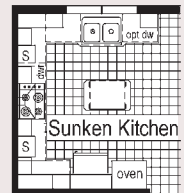
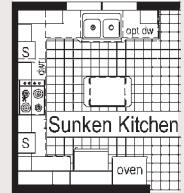
Opt. transom window(s) available with opt. 9' ceiling only. * = opt 4" staggered overhead cabinets S32 = Opt. 32" Serenity lav base

CN105A 2852 (DE517A)

Approx. 1387 Sq. Ft.



Optional Wall Oven & Surface Unit

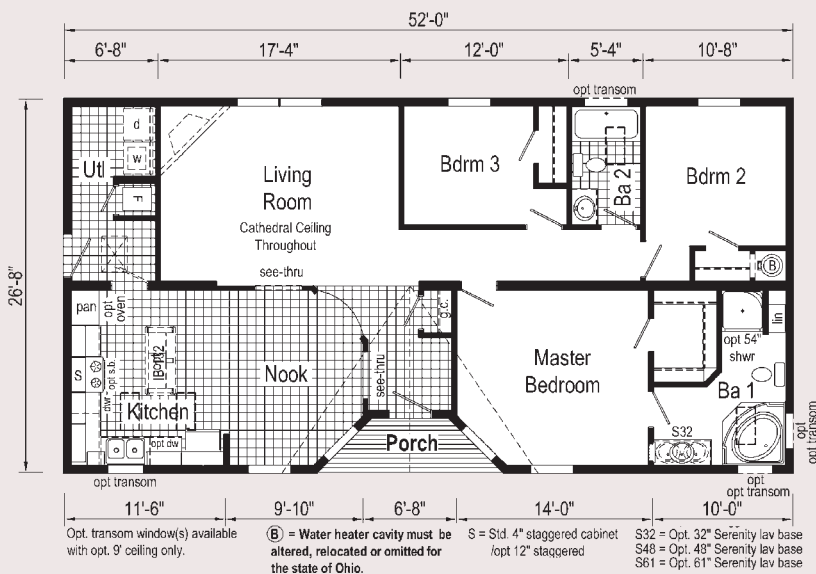


Optional Chef's Choice Kitchen

Opt. transom window(s) available with opt. 9' ceiling only. S = Std. 4" staggered cabinet / opt 12" staggered
 S32 = Opt. 32" Serenity lav base S48 = Opt. 48" Serenity lav base S61 = Opt. 61" Serenity lav base
 (A) = std frz spc or opt util sink. (B) = Water heater cavity must be altered, relocated or omitted for the state of Ohio.
 * = Opt. staggered overhead cabinet w/opt. flat ceiling.

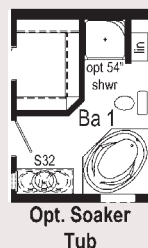
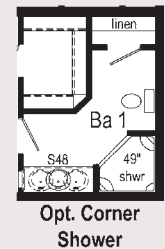
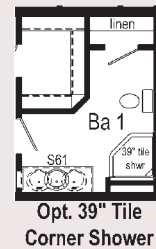


Some Features may be Optional

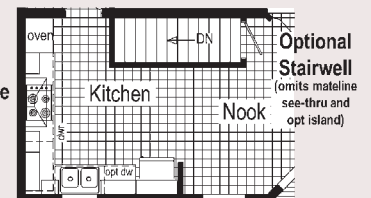


CN108A 2852 (TL527A)

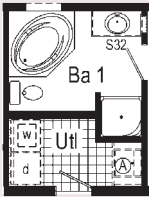
Approx. 1349 Sq. Ft.



Optional Chef's Choice Kitchen



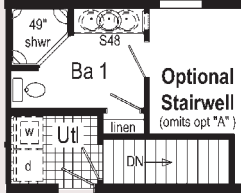
Opt. Soaker Tub



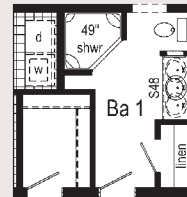
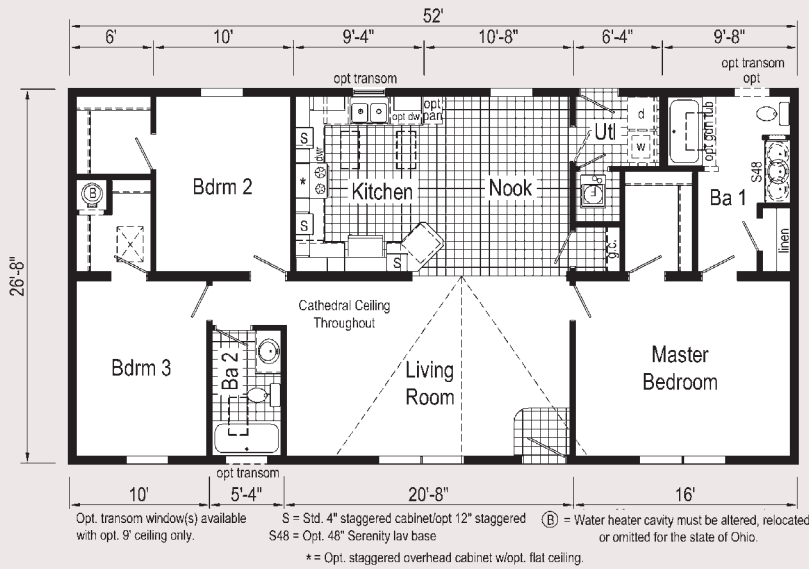
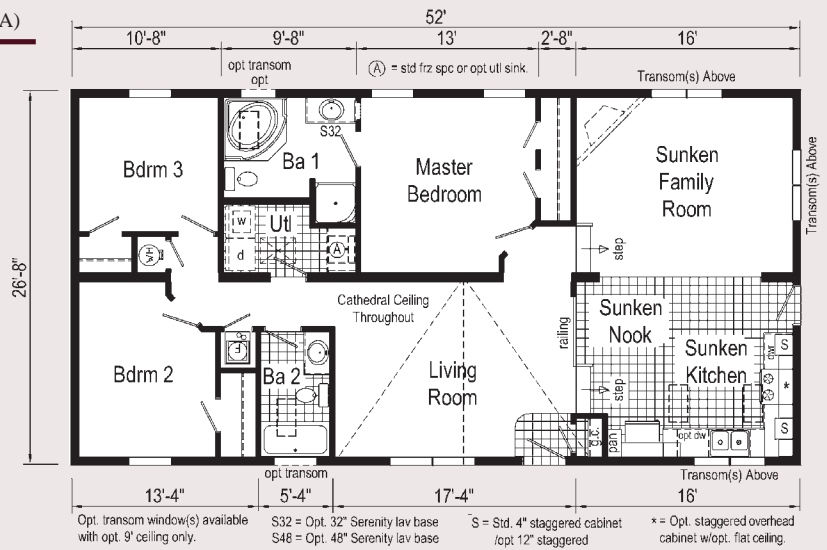
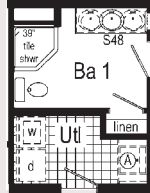
CN190A 2852 (TL562A)

Approx. 1387 Sq. Ft.

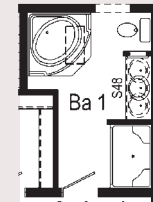
Opt. Corner Shower



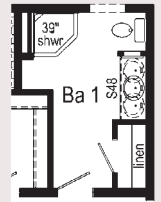
Opt. 39" Tile Corner Shower



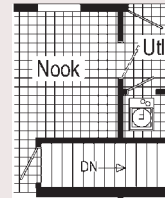
Opt. Corner Shower



Optional Glamour Bath



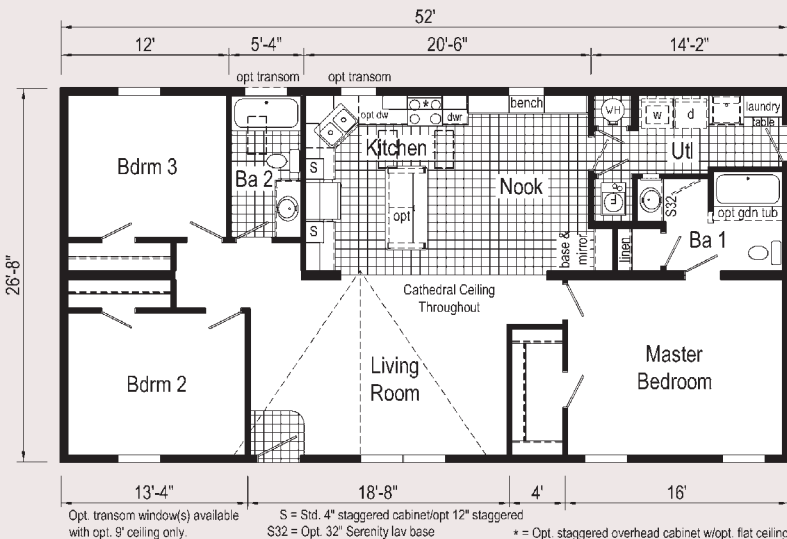
Opt. 39" Tile Corner Shower



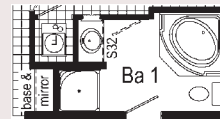
Optional Stairwell (omits g.c.)

CN264A 2852 (A3109A)

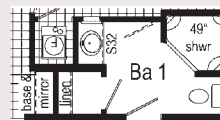
Approx. 1387 Sq. Ft.



Optional Glamour Bath (omits linen)

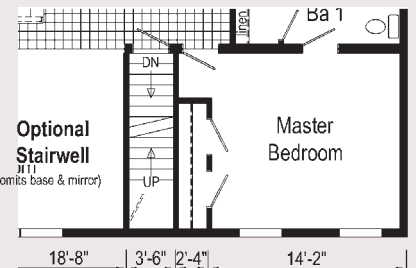


Opt. Corner Shower



CN271A 2852 (A3141A)

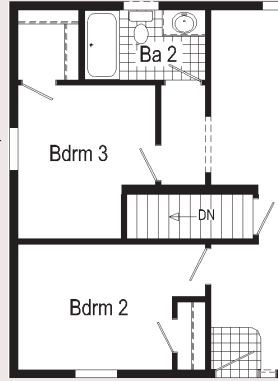
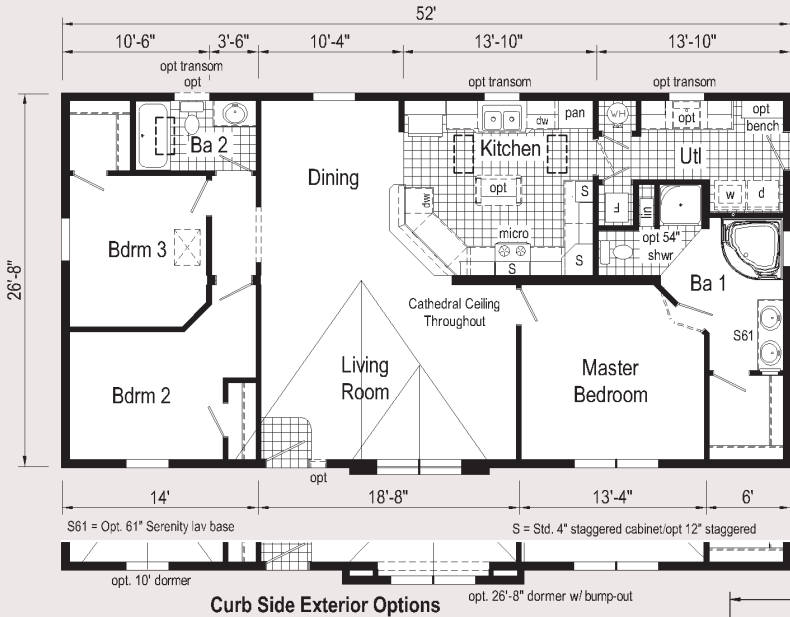
Approx. 1387 Sq. Ft.



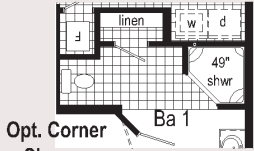
Optional Stairwell (omits base & mirror)

CN281A 2852 (SN101A)

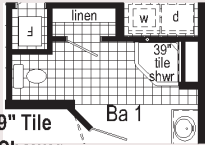
Approx. 1387 Sq. Ft.



Optional Stairwell



Opt. Corner Shower

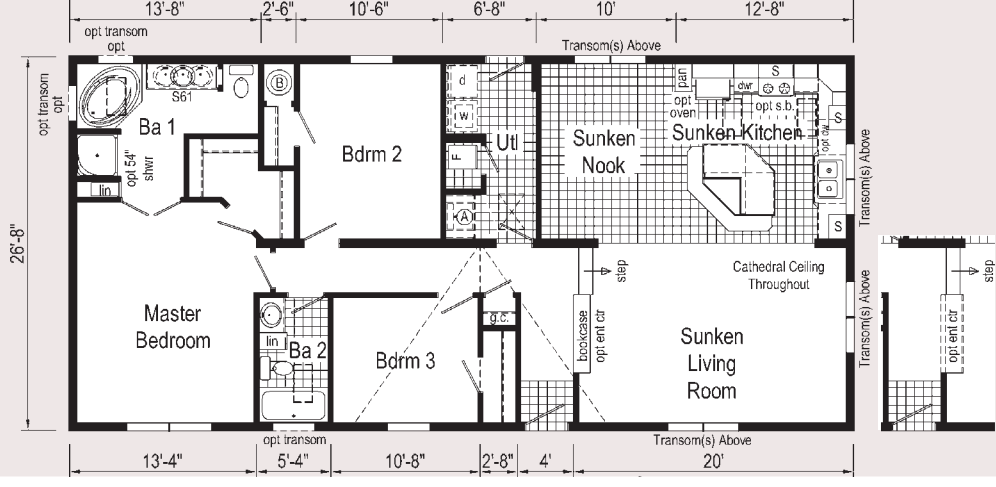
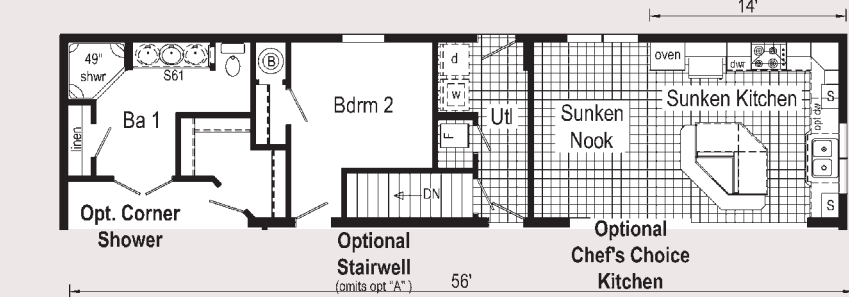
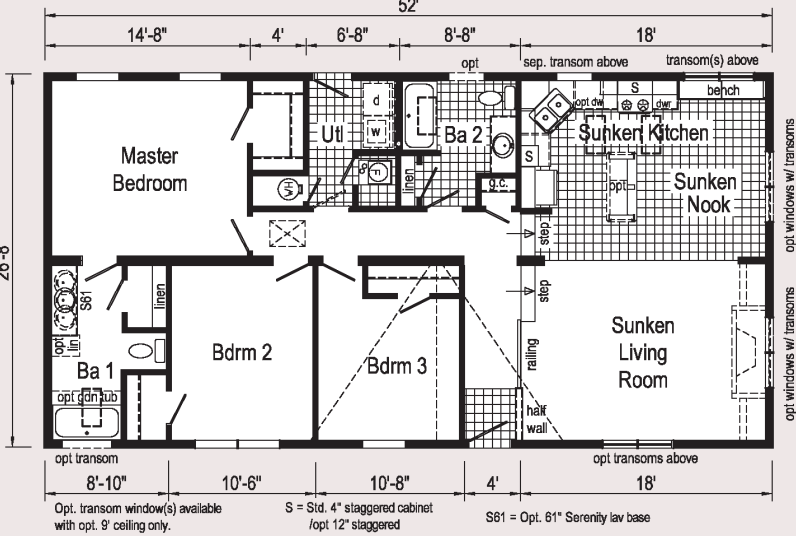
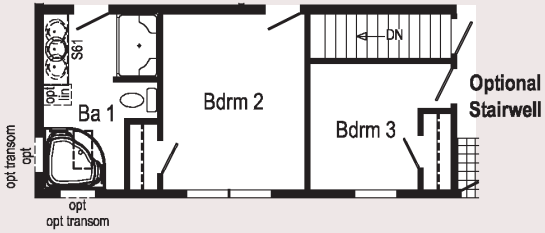


Opt. 39" Tile Corner Shower

CN288A 2852 (A3178A)

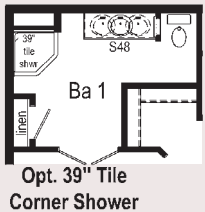
Approx. 1387 Sq. Ft.

Optional Glamour Bath
(omits linen)



CN111A 2856 (TL569A)

Approx. 1493 Sq. Ft.



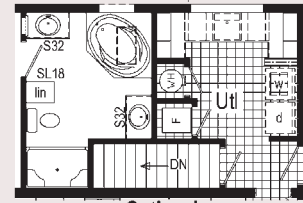
Opt. 39" Tile Corner Shower

Opt. transom window(s) available with opt. 9' ceiling only. S61 = Opt. 61" Serenity lav base S48 = Opt. 48" Serenity lav base (A) = Std frz spc, opt. utl sink or bench.
S = Std. 4" staggered cabinet /opt 12" staggered (B) = Water heater cavity must be altered, relocated or omitted for the state of Ohio.



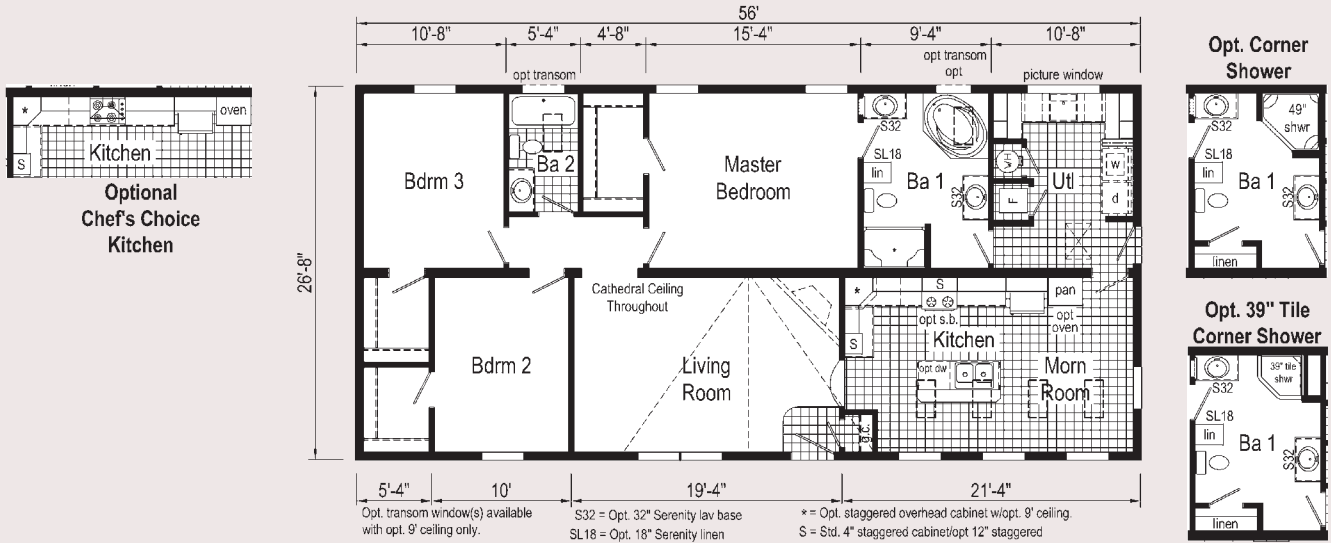
CN115A 2856 (DE630A)

Approx. 1493 Sq. Ft.



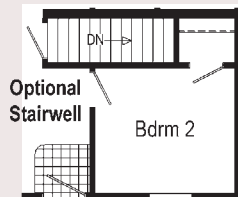
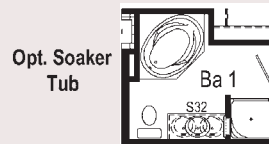
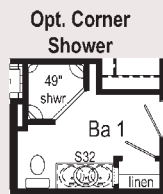
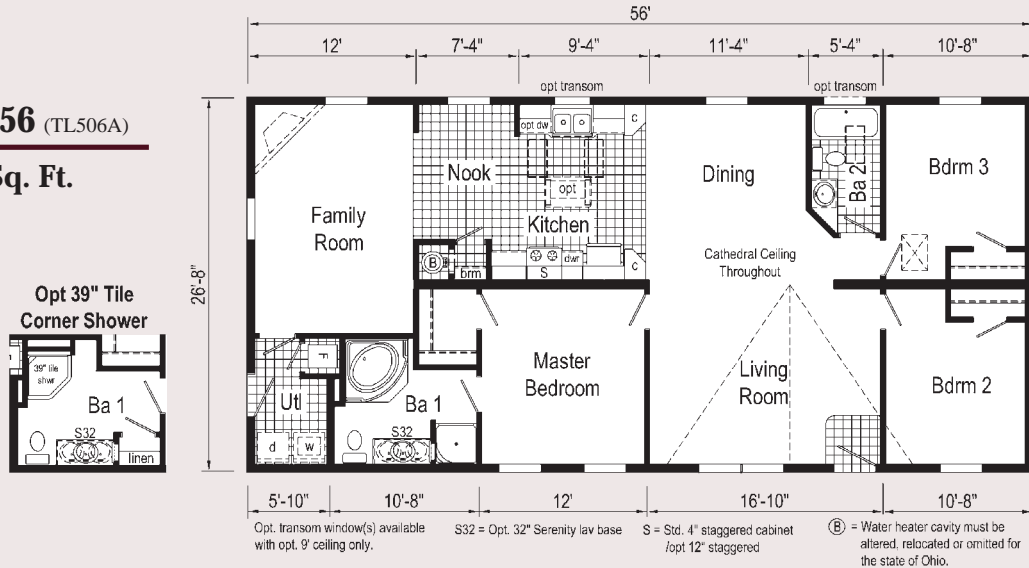
Optional Stairwell

Some Features may be Optional



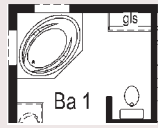
CN116A 2856 (TL506A)

Approx. 1493 Sq. Ft.

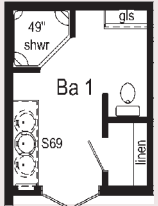


CN117A 2856 (TL529A)

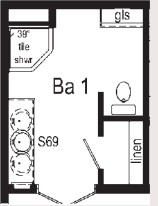
Approx. 1493 Sq. Ft.



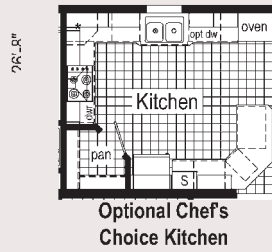
Opt. Soaker Tub



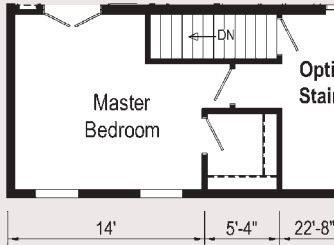
Opt. Corner Shower



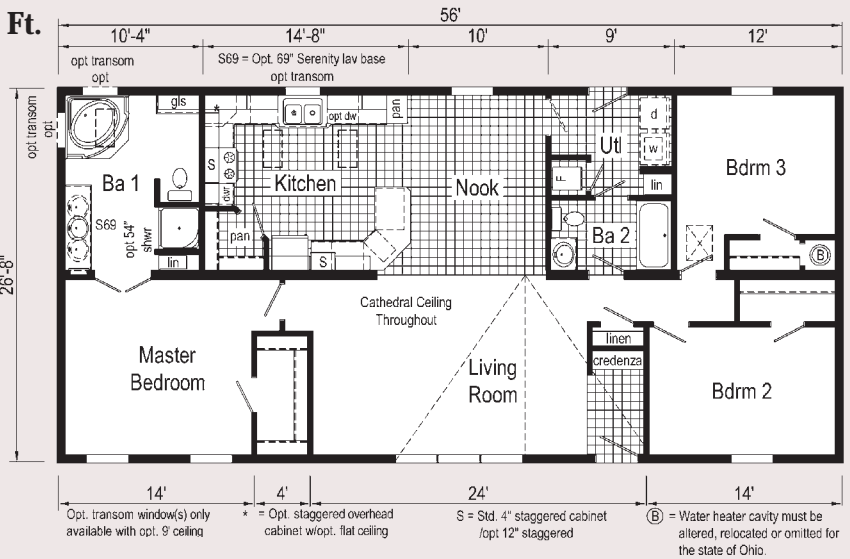
Opt. 39" Tile Corner Shower



Optional Chef's Choice Kitchen



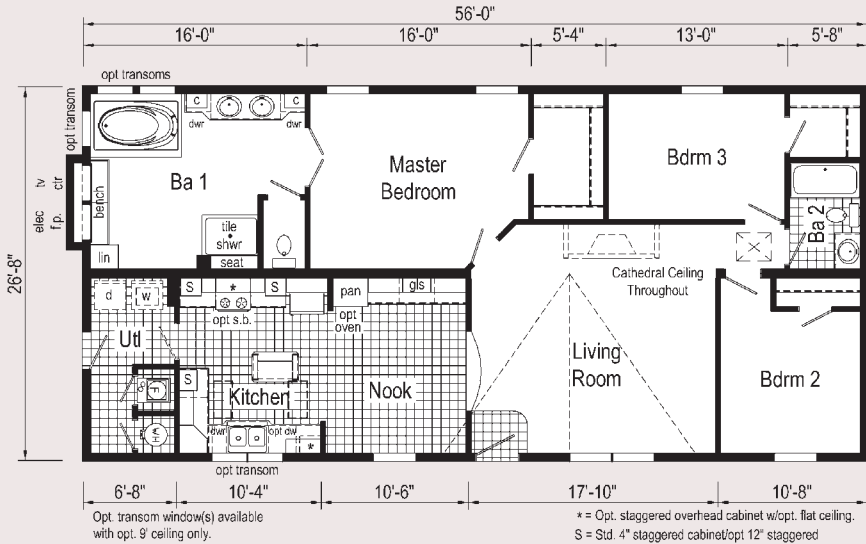
Optional Stairwell



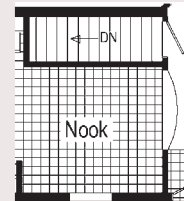
Opt. transom window(s) only available with opt. 9' ceiling
 * = Opt. staggered overhead cabinet w/opt. flat ceiling
 S = Std. 4" staggered cabinet /opt 12" staggered
 (B) = Water heater cavity must be altered, relocated or omitted for the state of Ohio.

CN193A 2856 (DE633A)

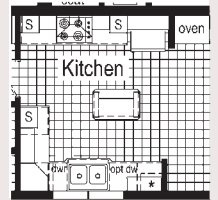
Approx. 1493 Sq. Ft.



Opt. transom window(s) available with opt. 9' ceiling only.
 * = Opt. staggered overhead cabinet w/opt. flat ceiling.
 S = Std. 4" staggered cabinet/opt 12" staggered



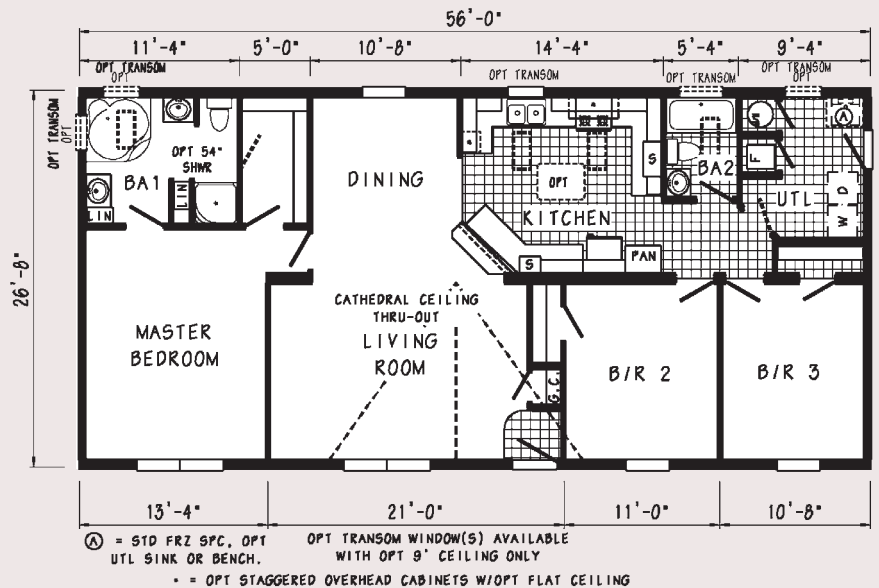
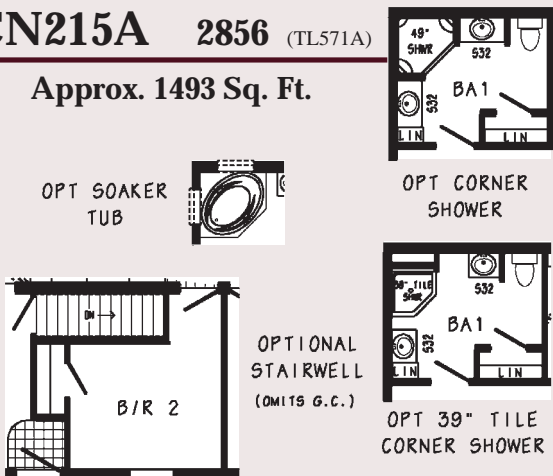
Optional Stairwell (omits pan & cabs)



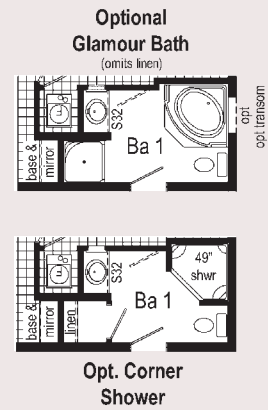
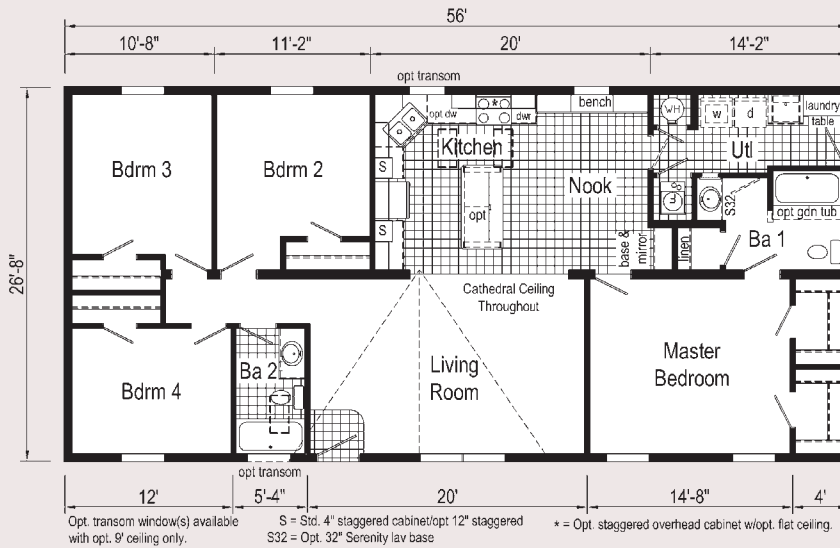
Optional Chef's Choice Kitchen (not available w/ Optional Stairwell)

CN215A 2856 (TL571A)

Approx. 1493 Sq. Ft.

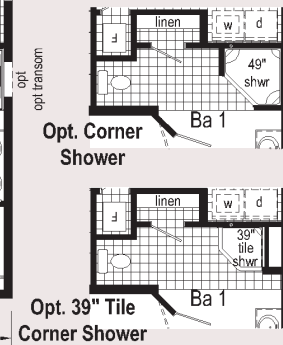
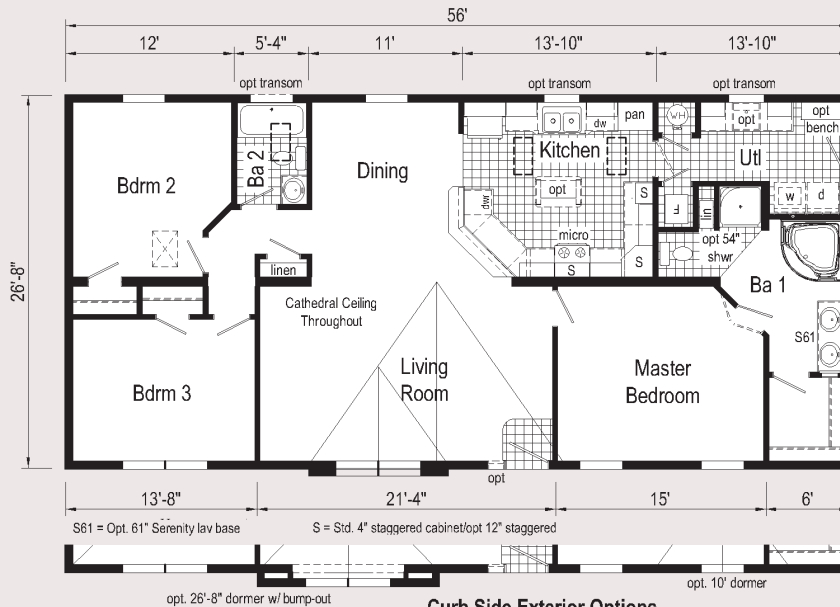
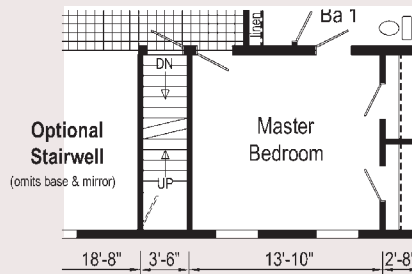


(A) = STD FRZ SPC, OPT UTL SINK OR BENCH.
 OPT TRANSMOM WINDOW(S) AVAILABLE WITH OPT 9' CEILING ONLY
 * = OPT STAGGERED OVERHEAD CABINETS W/OPT FLAT CEILING



CN276A 2856 (A3159A)

Approx. 1493 Sq. Ft.

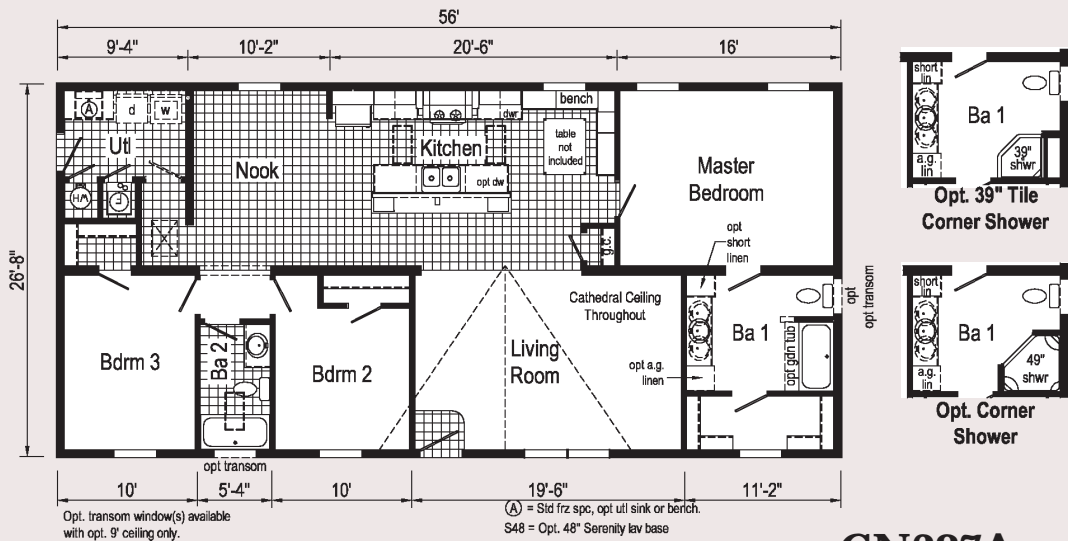


Curb Side Exterior Options



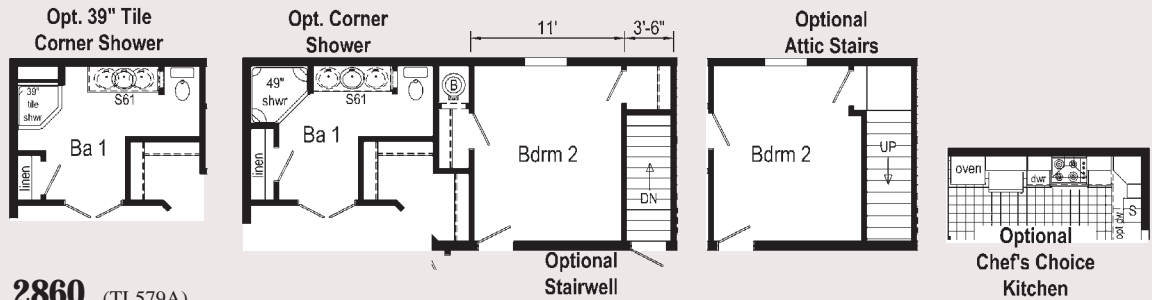
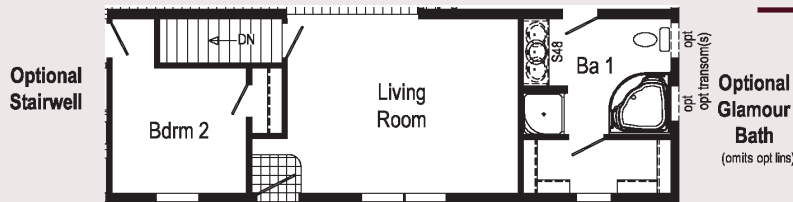
CN282A 2856 (SN102A)

Approx. 1493 Sq. Ft.



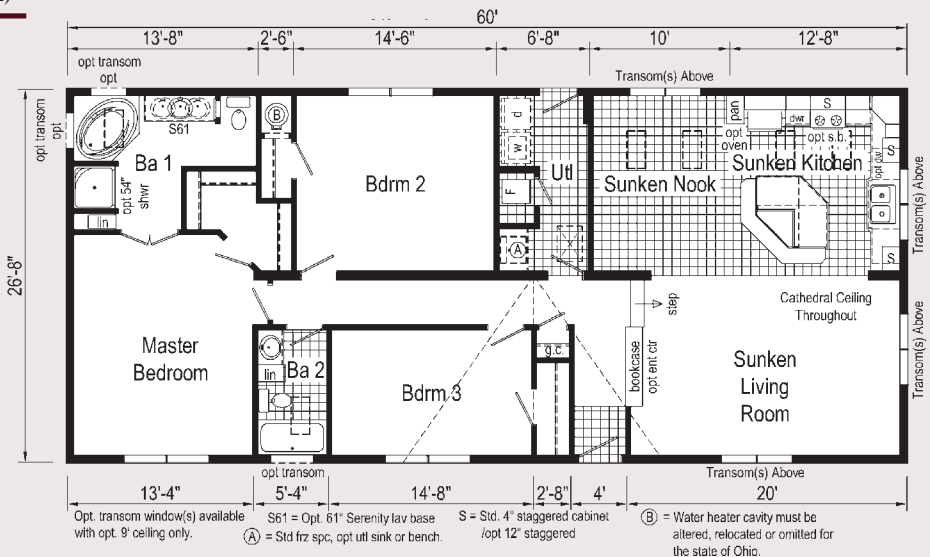
CN287A 2856 (A3177A)

Approx. 1493 Sq. Ft.



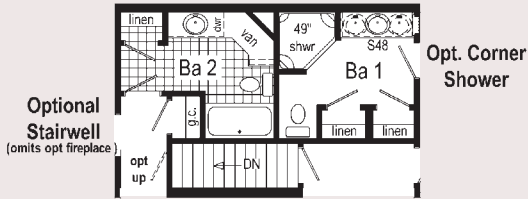
CN120A 2860 (TL579A)

Approx. 1600 Sq. Ft.

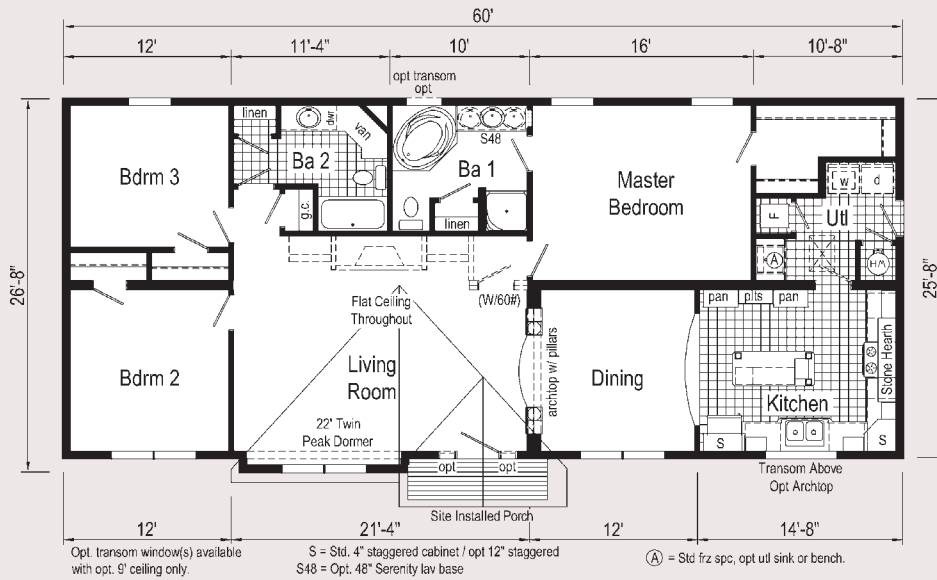


CN124A 2860 (NONE)

Approx. 1552 Sq. Ft.

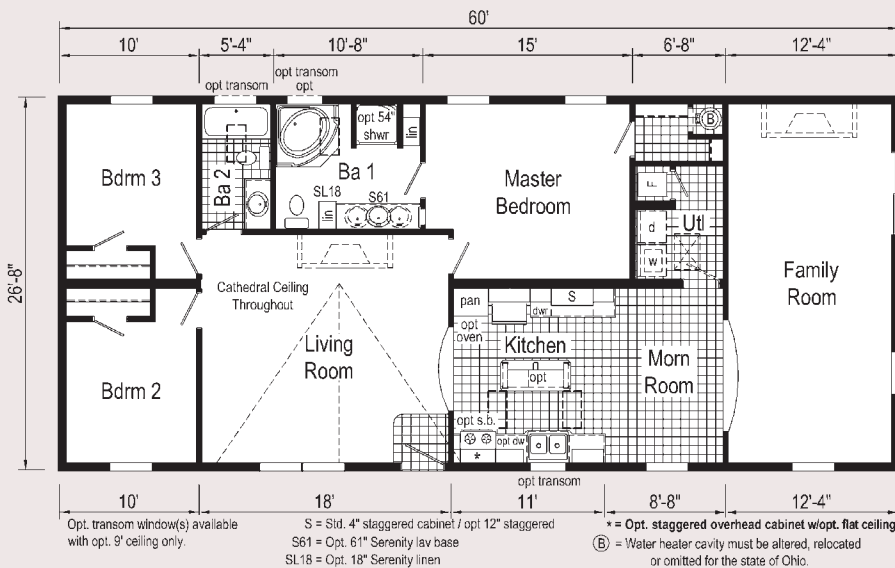


Some Features may be Optional

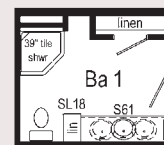
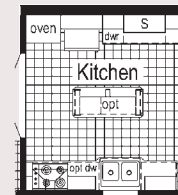


CN127A 2860 (TL524A)

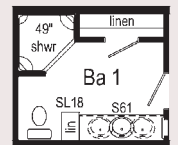
Approx. 1600 Sq. Ft.



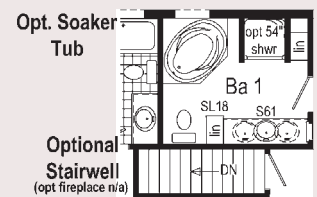
Optional Chef's Choice Kitchen



Opt. 39" Tile Corner Shower



Opt. Corner Shower



Opt. Soaker Tub

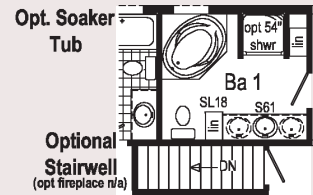
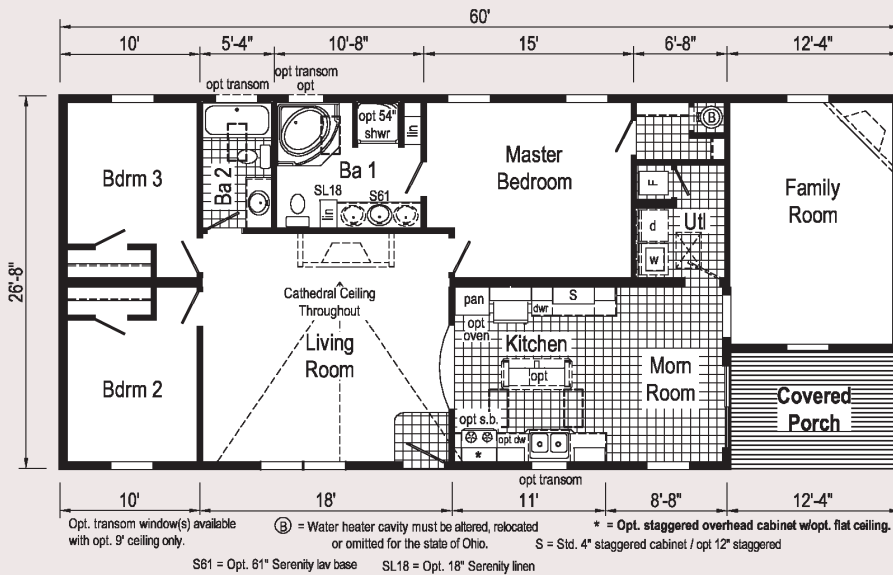
Optional Stairwell (opt fireplace n/a)



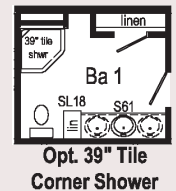
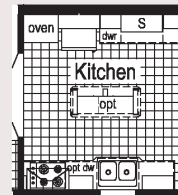
CN128A 2860 (TL525A)

Approx. 1498 Sq. Ft.

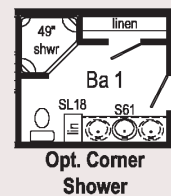
Some Features may be Optional



Optional Chef's Choice Kitchen



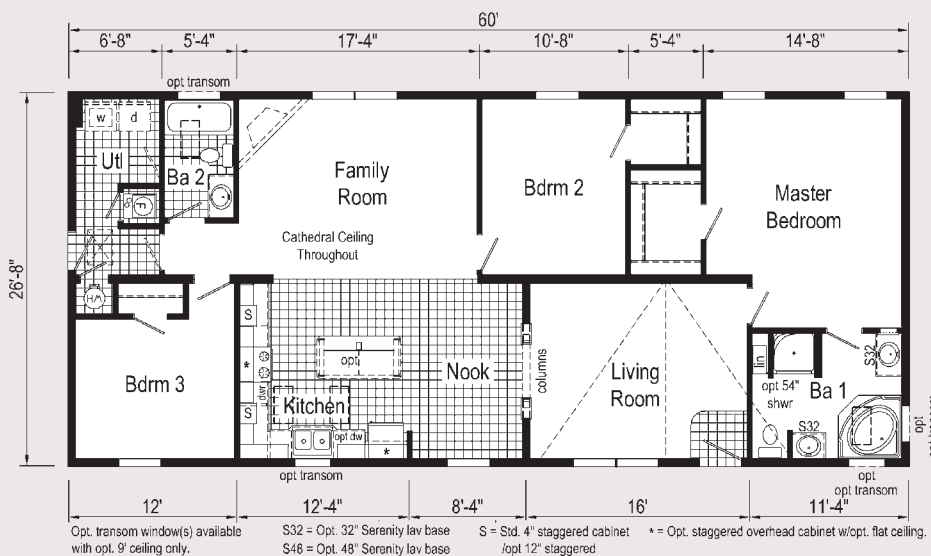
Opt. 39" Tile Corner Shower



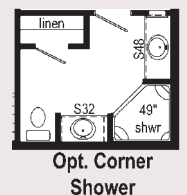
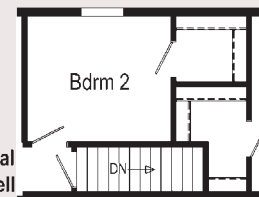
Opt. Corner Shower

CN191A 2860 (TL563A)

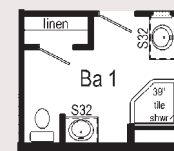
Approx. 1600 Sq. Ft.



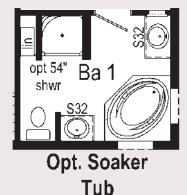
Optional Stairwell



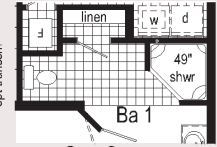
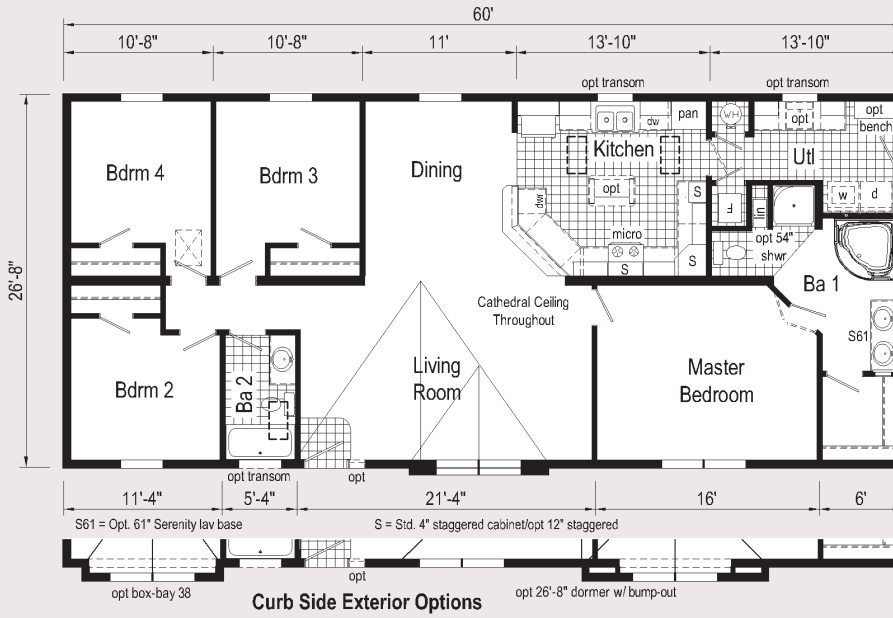
Opt. Corner Shower



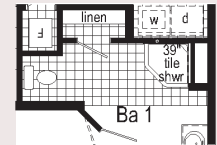
Opt. 39" Tile Corner Shower



Opt. Soaker Tub



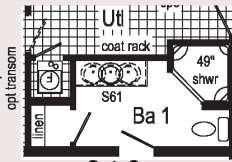
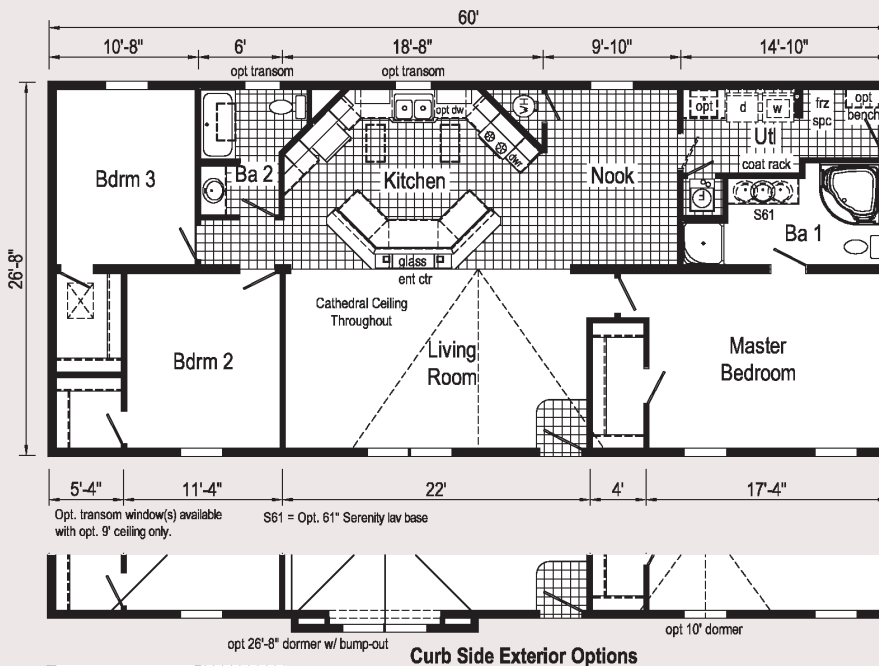
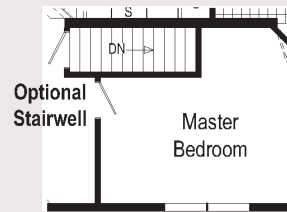
Opt. Corner Shower



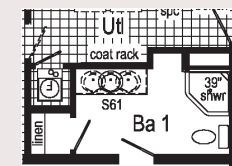
Opt. 39" Tile Corner Shower

CN283A 2860 (SN103A)

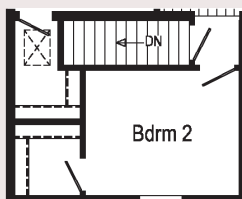
Approx. 1600 Sq. Ft.



Opt. Corner Shower

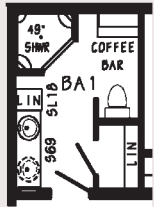


Opt. 39" Tile Corner Shower

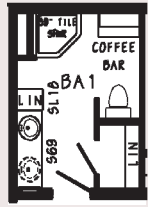


CN289A 2860 (TL603A)

Approx. 1600 Sq. Ft.



OPT CORNER SHOWER



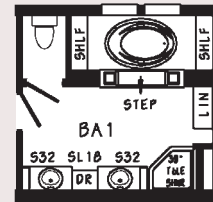
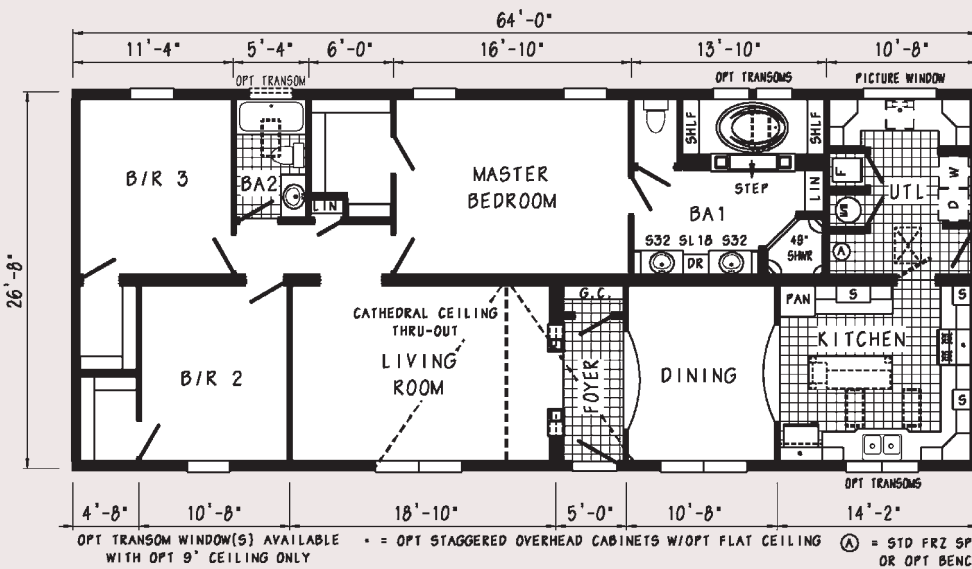
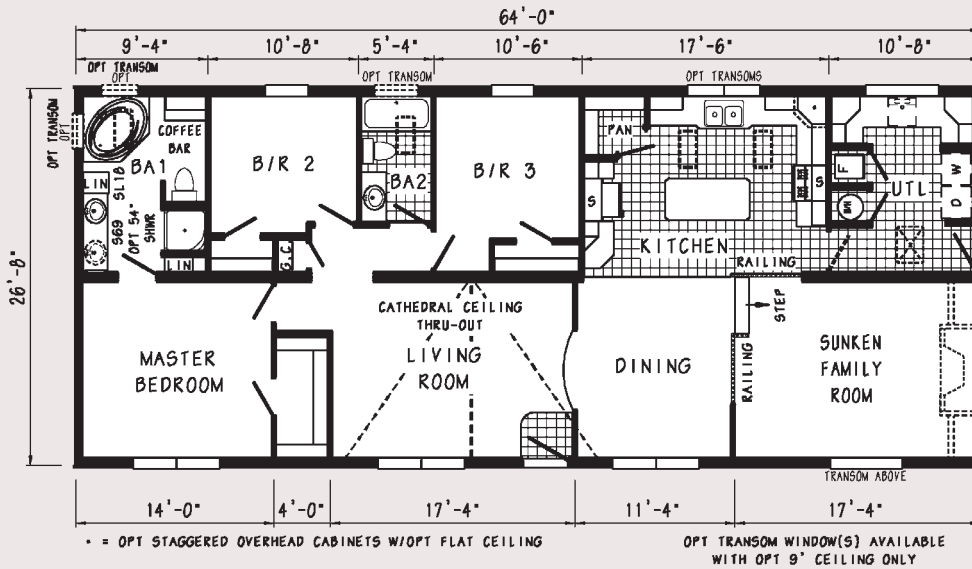
OPT 39" TILE CORNER SHOWER



OPTIONAL STAIRWELL (OMITS CORNER PANTRY)

CN194A 2864 (DE634A)

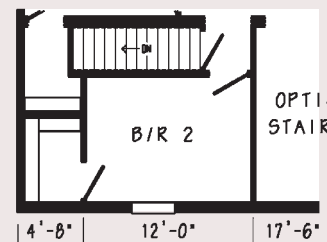
Approx. 1707 Sq. Ft.



OPT 39" TILE CORNER SHOWER

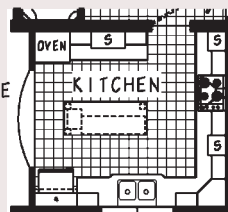
CN197A 2864 (DE656A)

Approx. 1707 Sq. Ft.

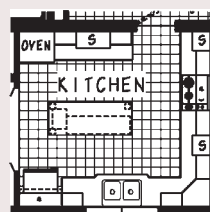


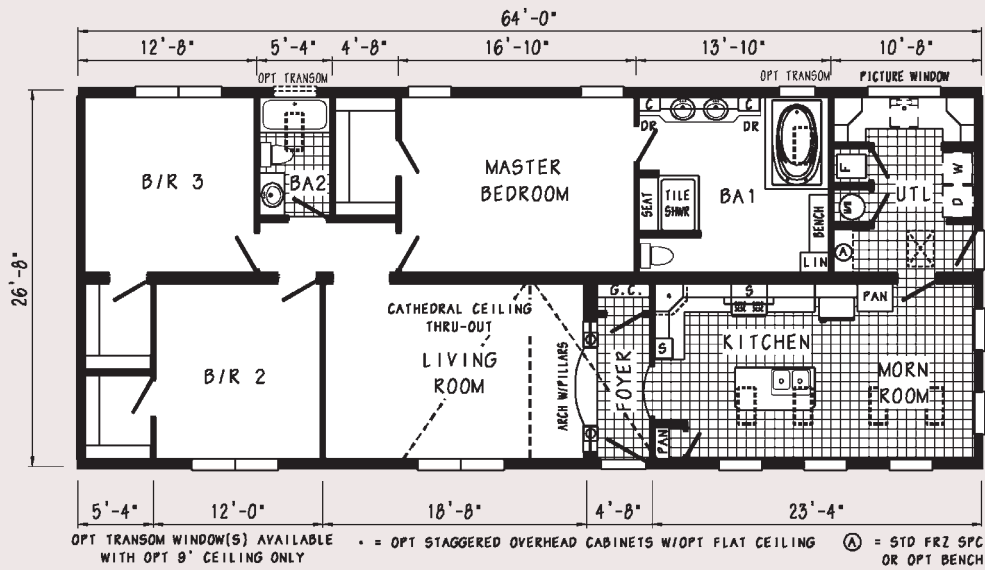
OPTIONAL STAIRWELL

OPTIONAL CHEF'S CHOICE KITCHEN



OPTIONAL WALL OVEN & SURFACE UNIT

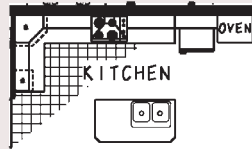




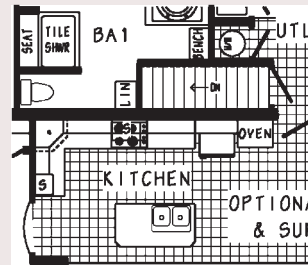
CN206A 2864 (DE640A)

Approx. 1707 Sq. Ft.

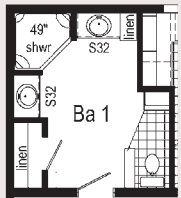
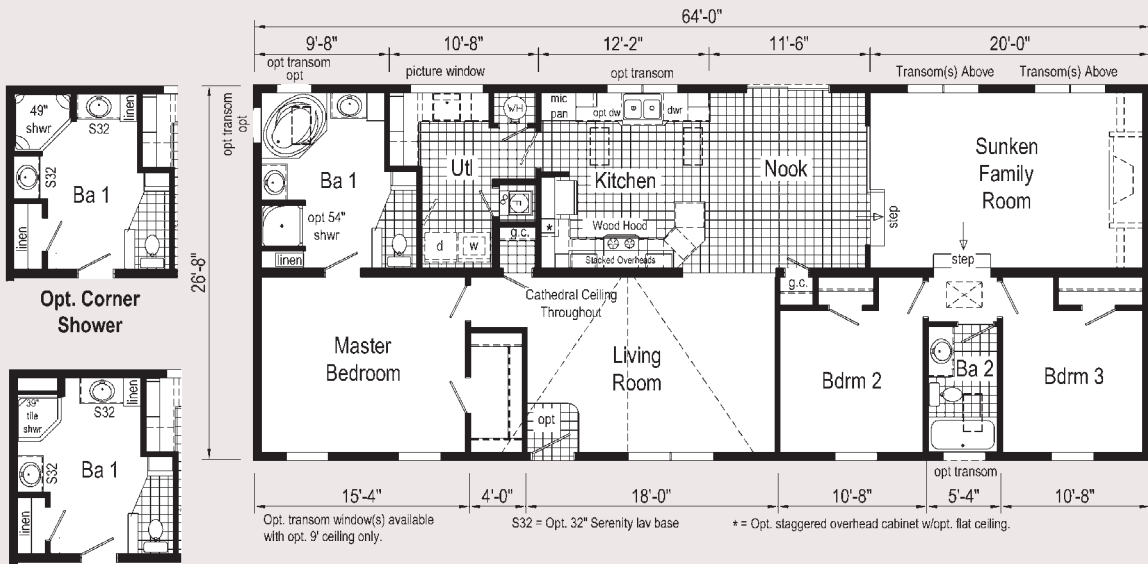
OPTIONAL CHEF'S CHOICE KITCHEN



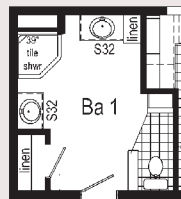
OPTIONAL STAIRWELL (OMITS OPT "A")



OPTIONAL WALL OVEN & SURFACE UNIT



Opt. Corner Shower

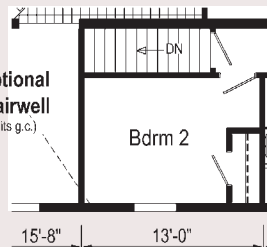


Opt. 39" Tile Corner Shower

CN213A 2864 (DE641A)

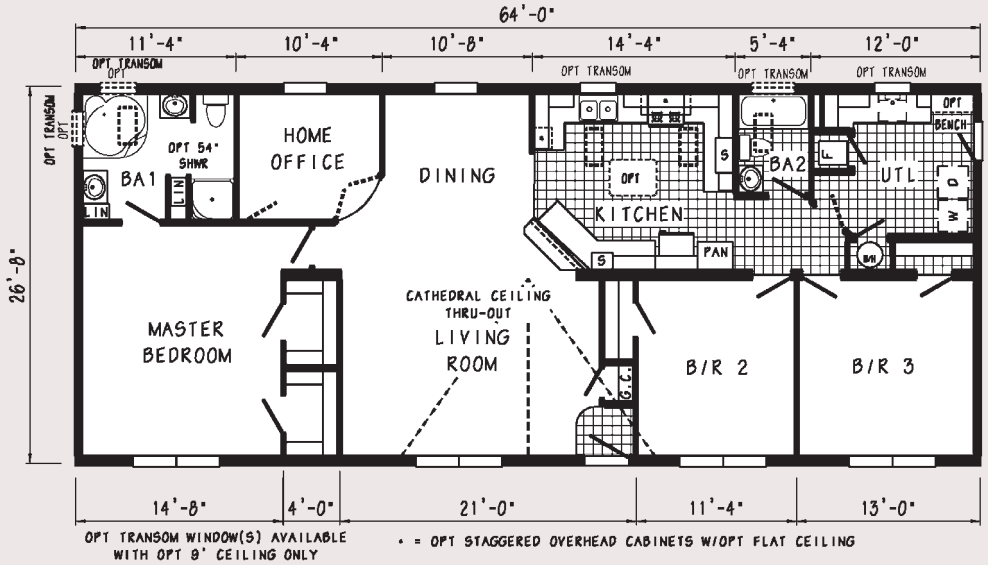
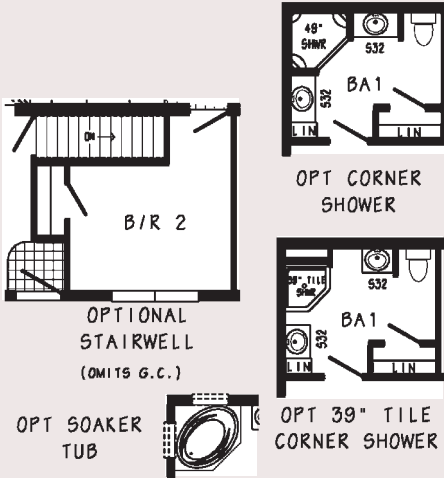
Approx. 1707 Sq. Ft.

Optional Stairwell (omits g.c.)



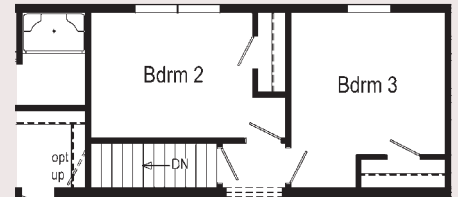
CN216A 2864 (TL572A)

Approx. 1707 Sq. Ft.

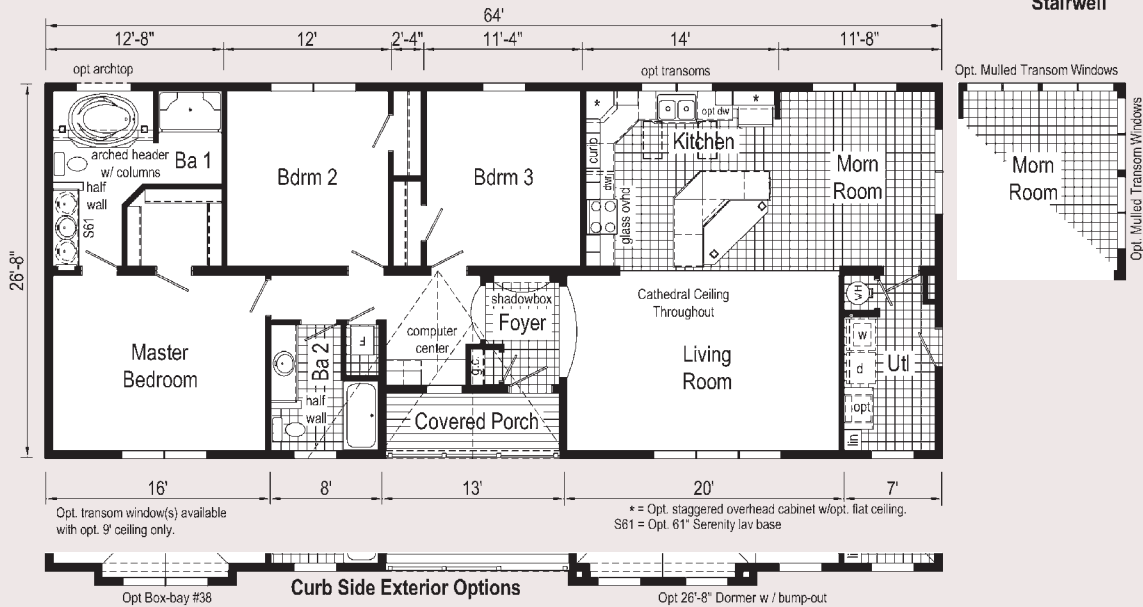


CN251A 2864 (DE672A)

Approx. 1649 Sq. Ft.



Some Features may be Optional

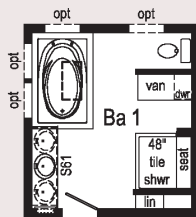




Some Features may be Optional

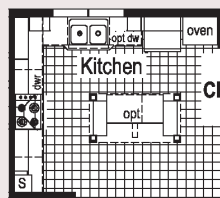
CN257A 2864 (TL596A)

Approx. 1707 Sq. Ft.

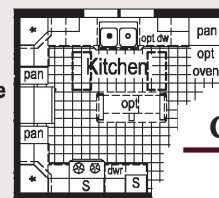


CN259A 2864 (TL598A)

Alt. Comfort Cove Bath



Optional
Chef's Choice
Kitchen

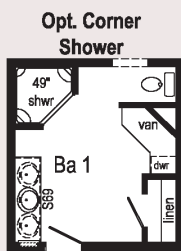
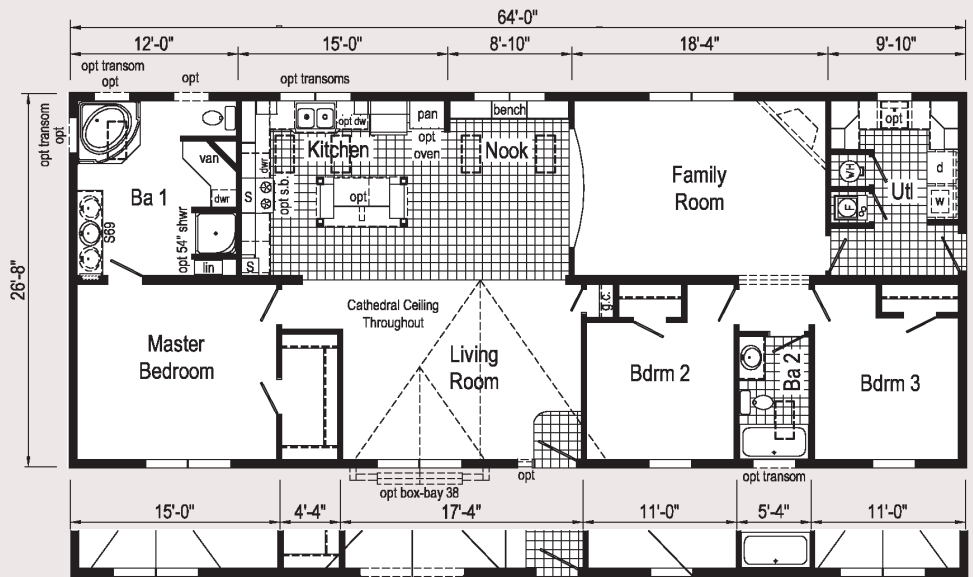


CN258A 2864 (TL597A)

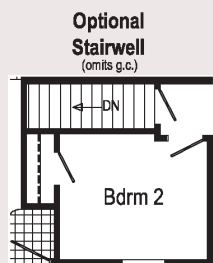
Alt. U-Kitchen

CN260A 2864 (TL599A)

Alt. Comfort Cove Bath
w/U-Kitchen

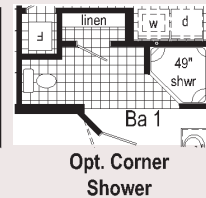
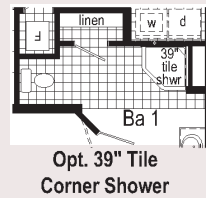
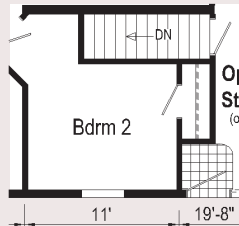
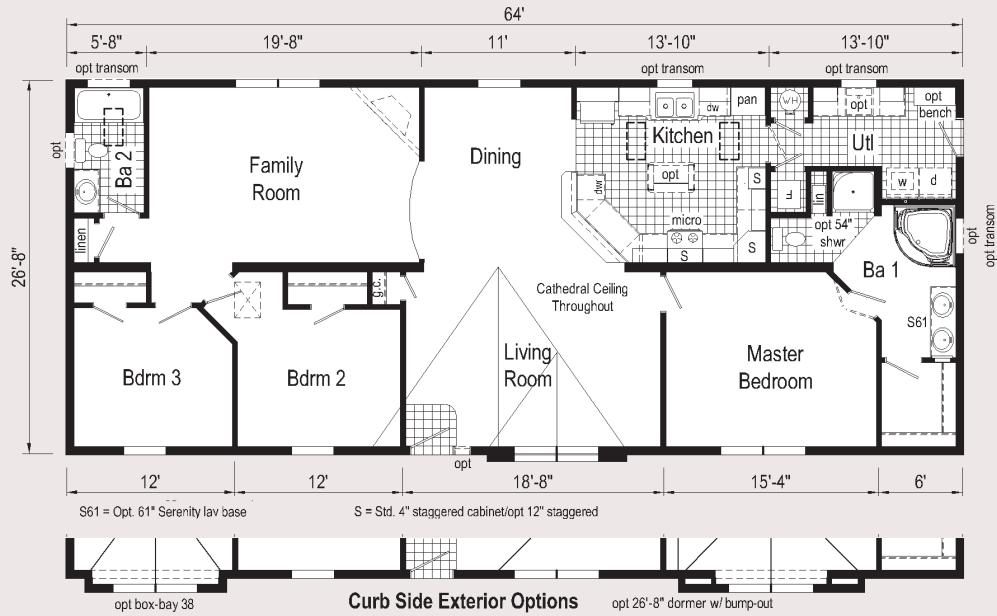


Opt. Corner
Shower

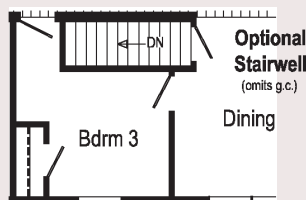
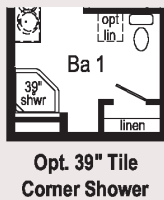
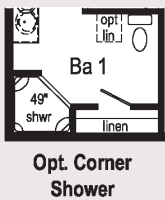
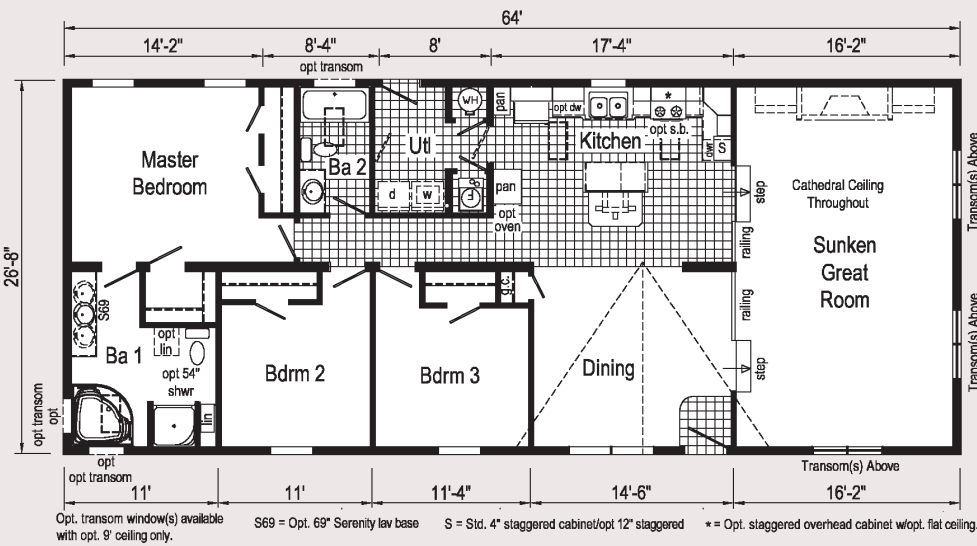


Optional
Stairwell
(omits g.c.)

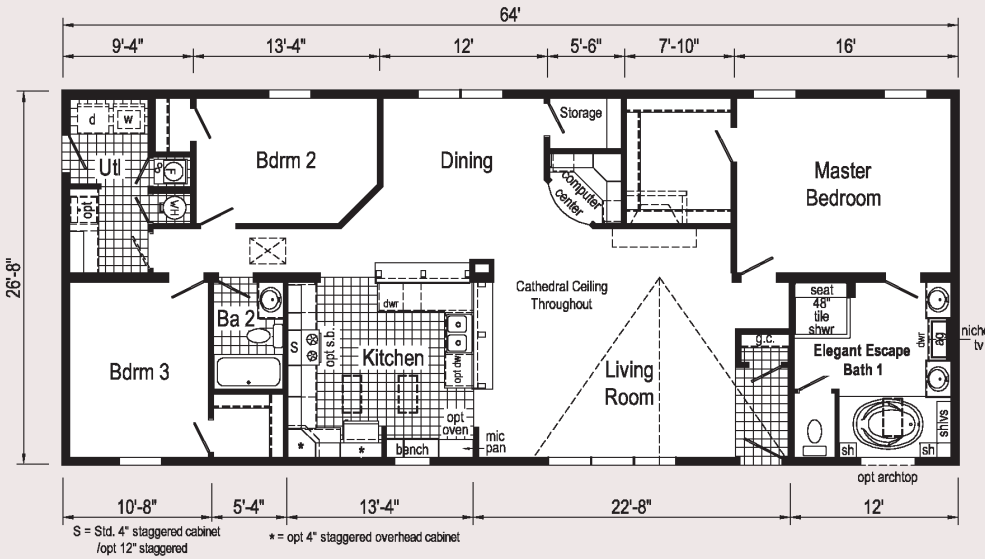
S61 = Opt. 61" Serenity lav base S69 = Opt. 69" Serenity lav base S = Std. 4" staggered cabinet/opt 12" staggered * = opt 4" staggered overhead cabinets Opt. transom window(s) available with opt. 9' ceiling only.



CN284A 2864 (SN104A)
Approx. 1707 Sq. Ft.

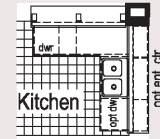


CN290A 2864 (TL605A)
Approx. 1707 Sq. Ft.

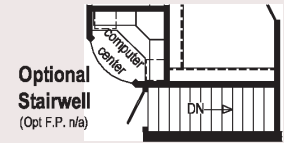


CN291A 2864 (DE683A)

Approx. 1707 Sq. Ft.



Optional Entertainment Center



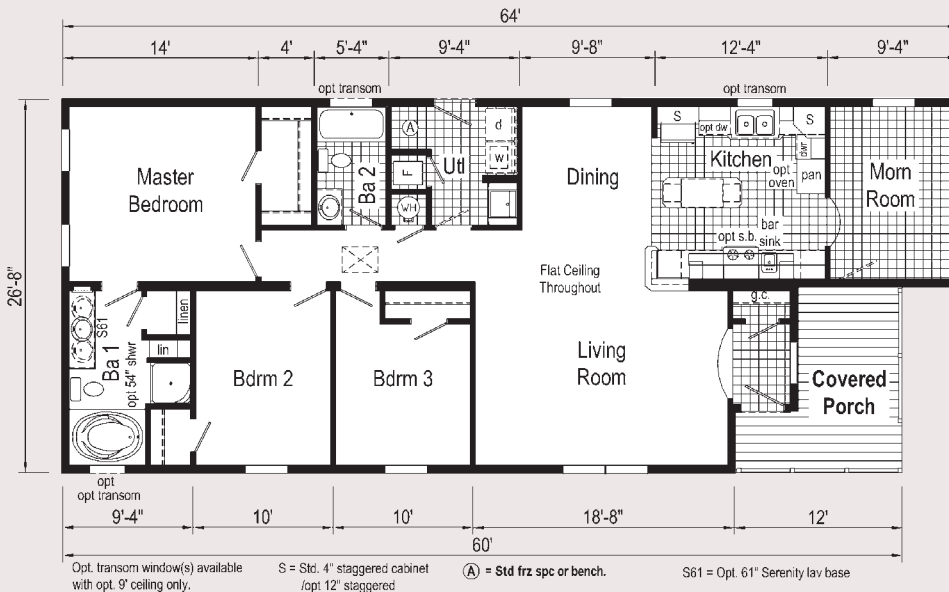
Optional Stairwell (Opt F.P. n/a)



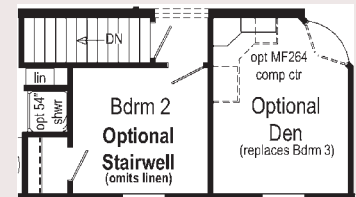
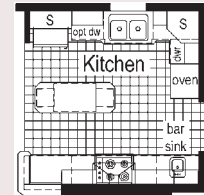
Some Features may be Optional

CN133A 2864/60 (DE657A)

Approx. 1534 Sq. Ft.



Optional Chef's Choice Kitchen



Optional Stairwell (omits linen)

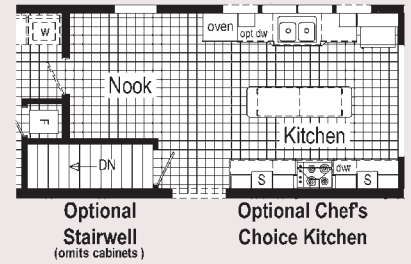
Optional Den (replaces Bdrm 3)

Opt. transom window(s) available with opt. 9' ceiling only. S = Std. 4" staggered cabinet /opt 12" staggered. (A) = Std frz spc or bench. S61 = Opt. 61" Serenity lav base

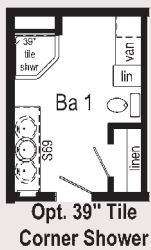
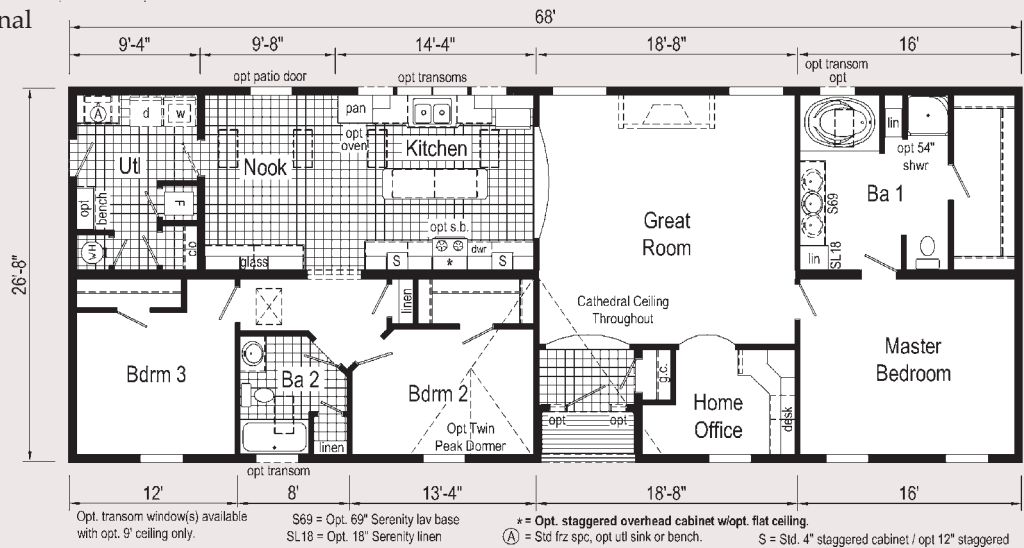
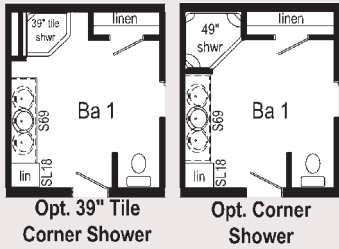


CN155A 2868 (DE631A)

Approx. 1789 Sq. Ft.

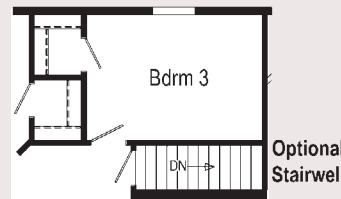


Some Features may be Optional

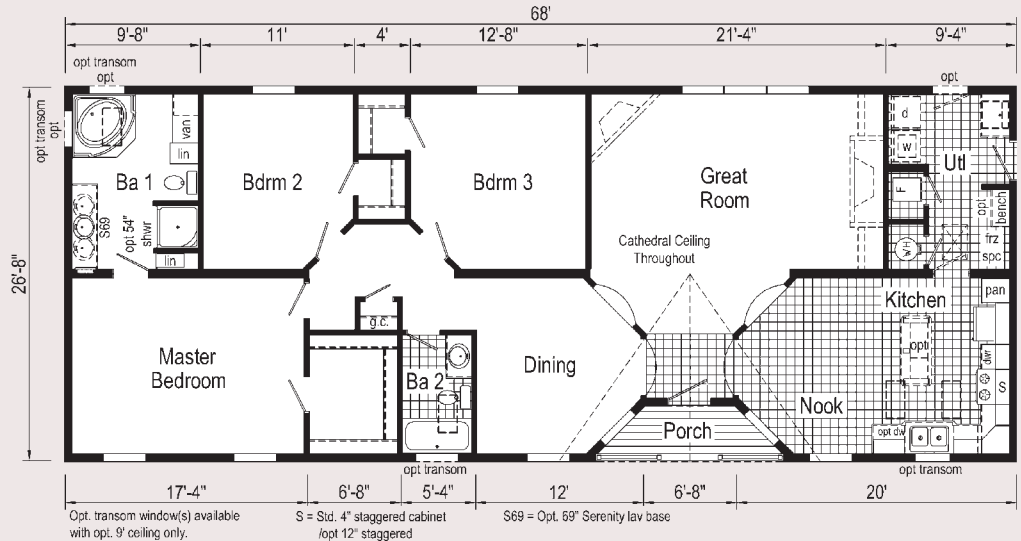
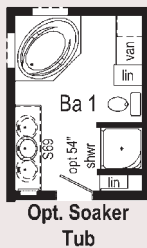
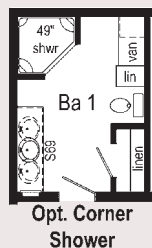


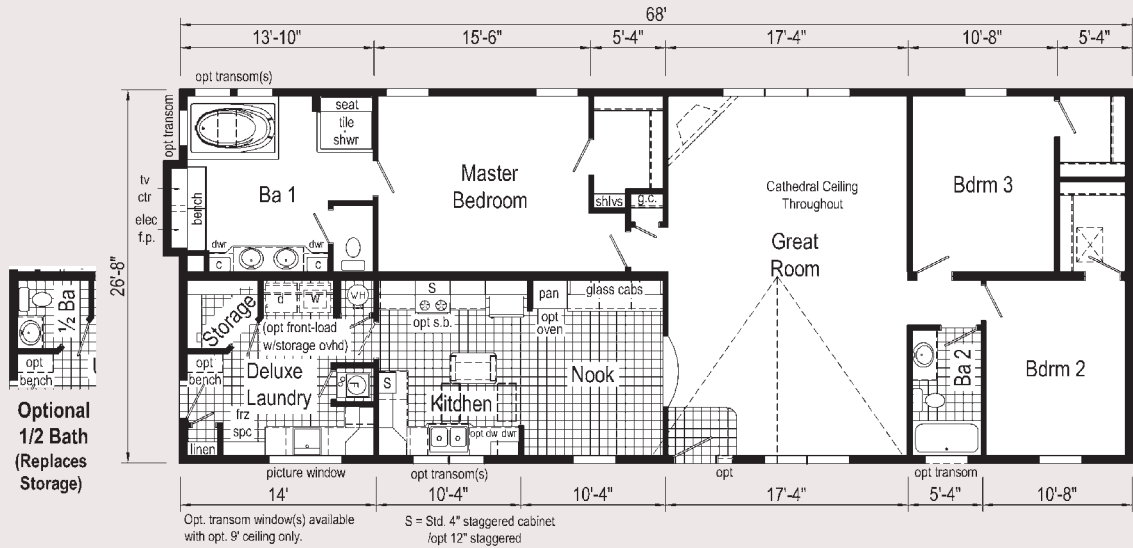
CN157A 2868 (TL535A)

Approx. 1773 Sq. Ft.



See Front Cover for Exterior Elevation



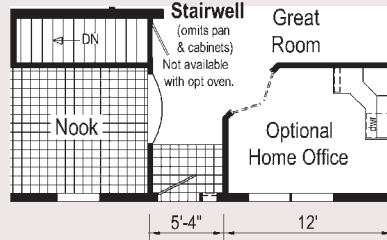


CN214A 2868 (DE642A)

Approx. 1813 Sq. Ft.

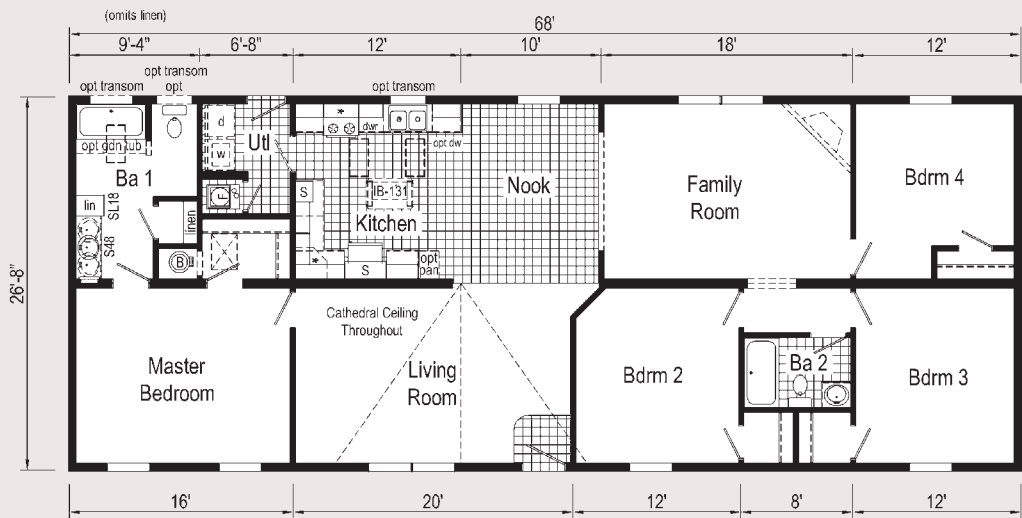
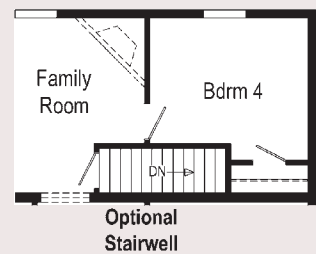
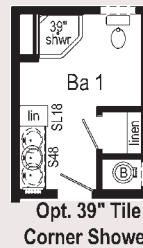
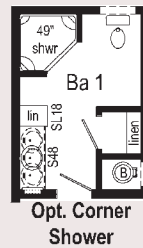
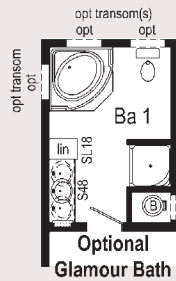


Optional Chef's Choice Kitchen
(Not available w/opt stairwell)



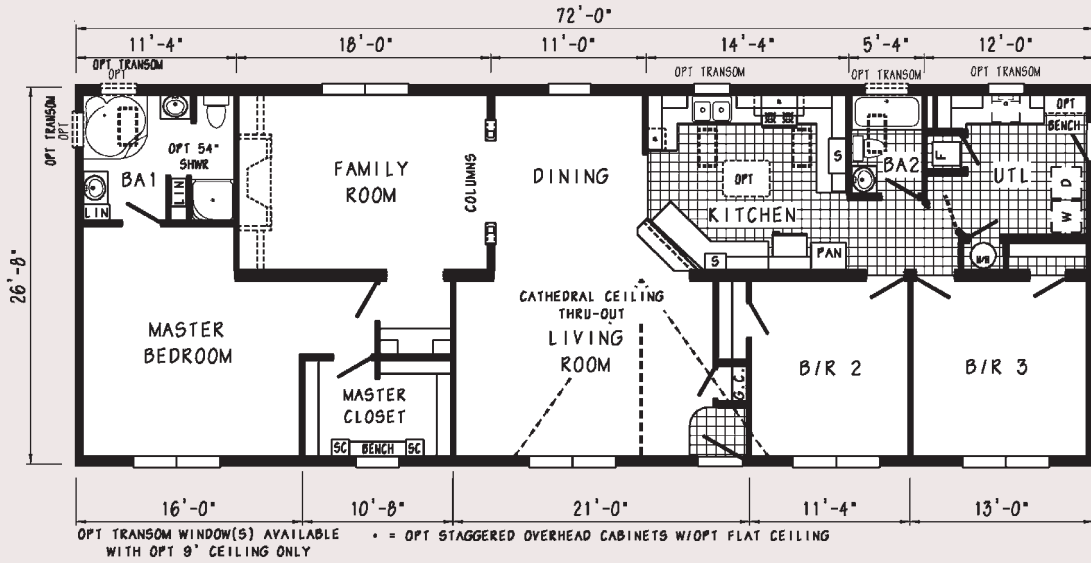
CN266A 2868 (A3120A)

Approx. 1813 Sq. Ft.

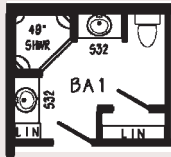


CN217A 2872 (TL573A)

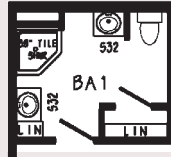
Approx. 1920 Sq. Ft.



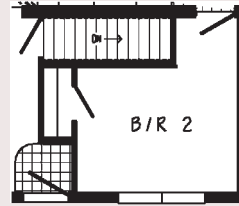
OPT SOAKER TUB



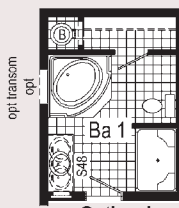
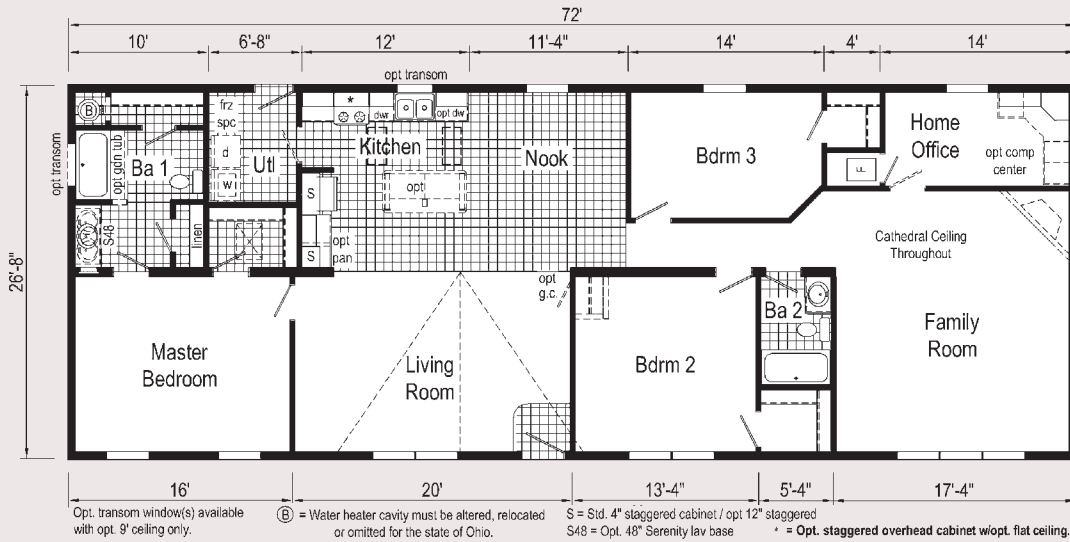
OPT CORNER SHOWER



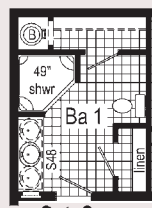
OPT 39" TILE CORNER SHOWER



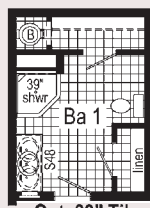
OPTIONAL STAIRWELL (OMITS G.C.)



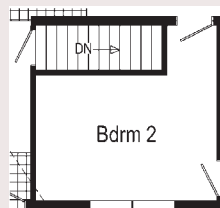
Optional Glamour Bath



Opt. Corner Shower



Opt. 39" Tile Corner Shower



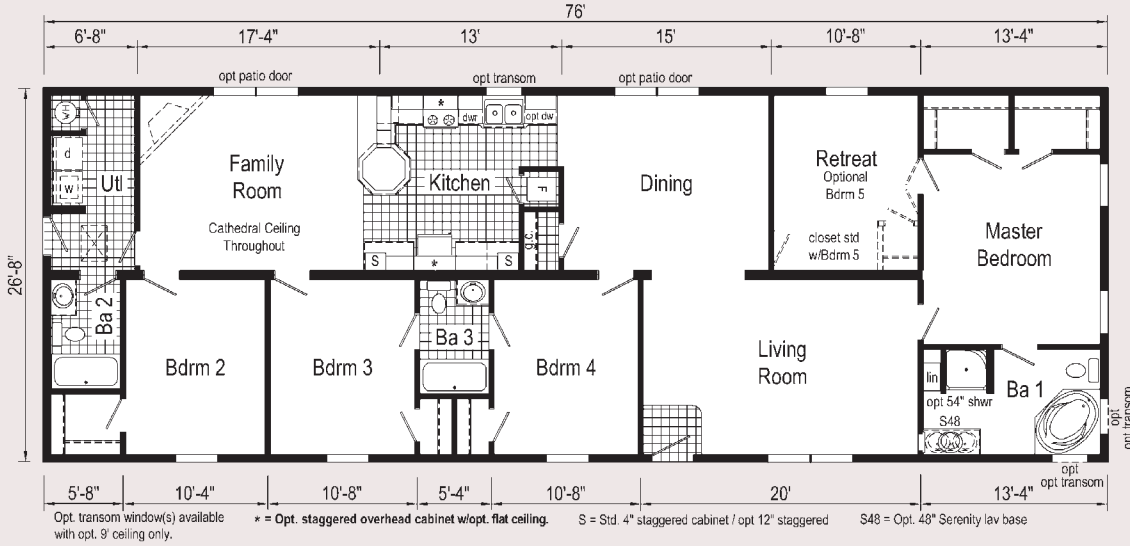
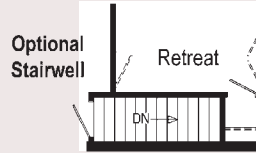
Optional Stairwell (omits opt. g.c.)

CN270A 2872 (A3130A)

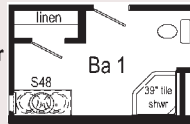
Approx. 1920 Sq. Ft.

CN165A 2876 (DE615A)

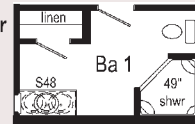
Approx. 2027 Sq. Ft.



Opt. 39" Tile Corner Shower

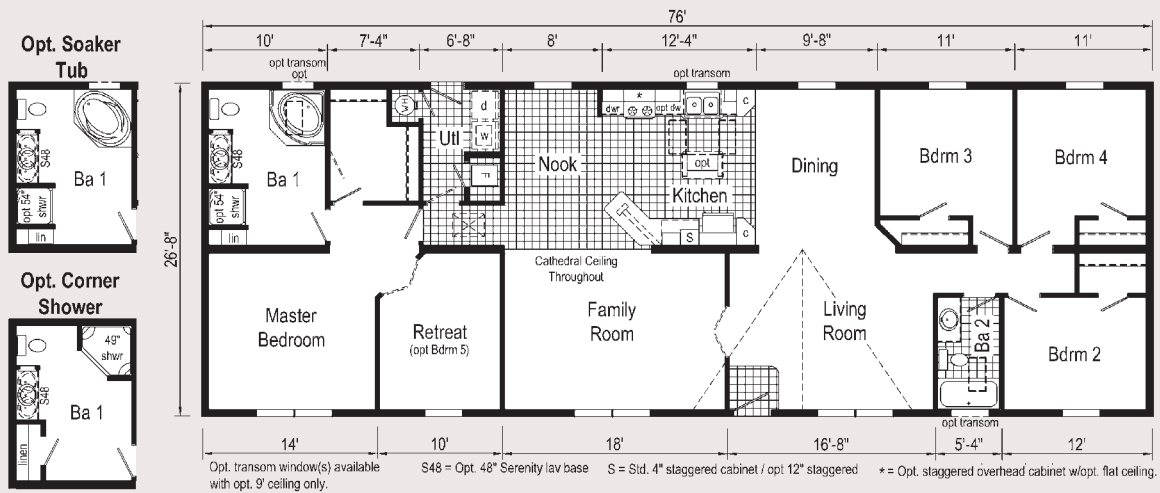


Opt. Corner Shower

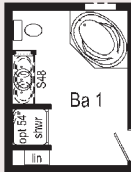


CN166A 2876 (TL507A)

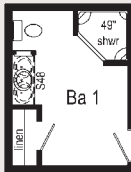
Approx. 2027 Sq. Ft.



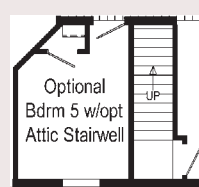
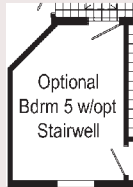
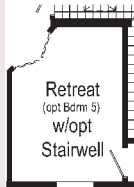
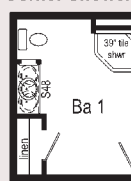
Opt. Soaker Tub



Opt. Corner Shower

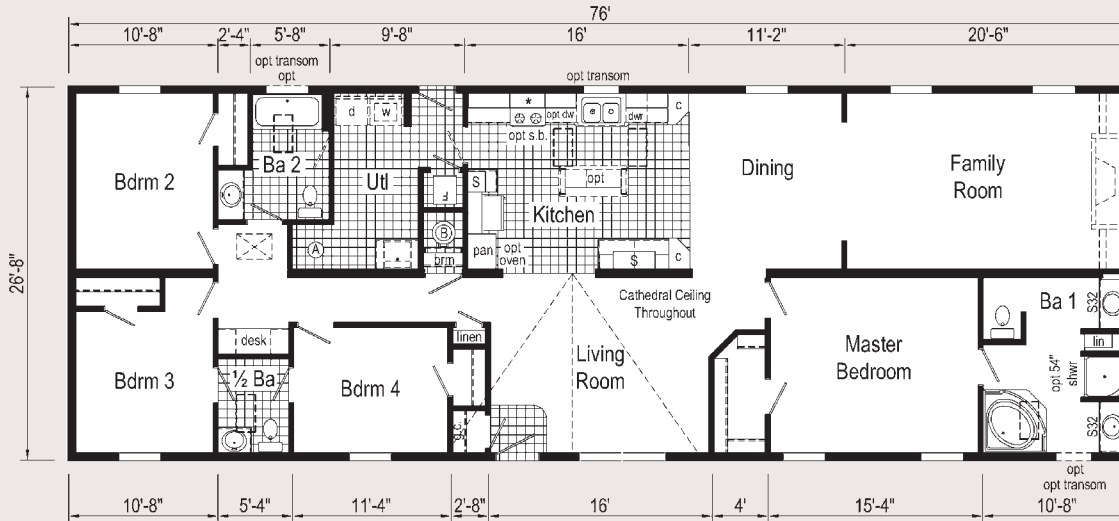
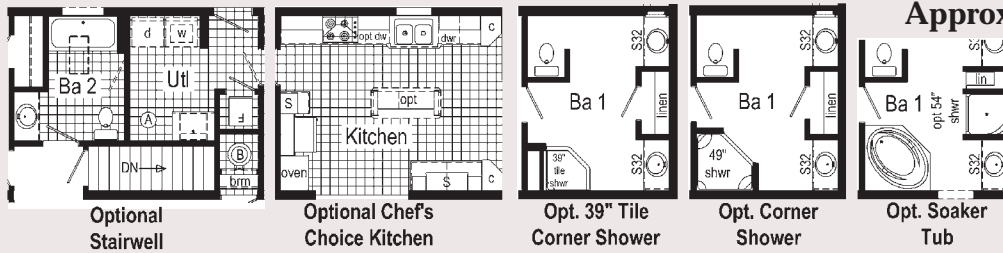
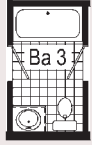


Opt. 39" Tile Corner Shower



Approx. 2027 Sq. Ft.

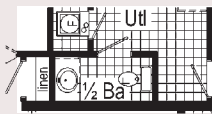
Opt Full Bath
(replaces half bath)
(omits desk)



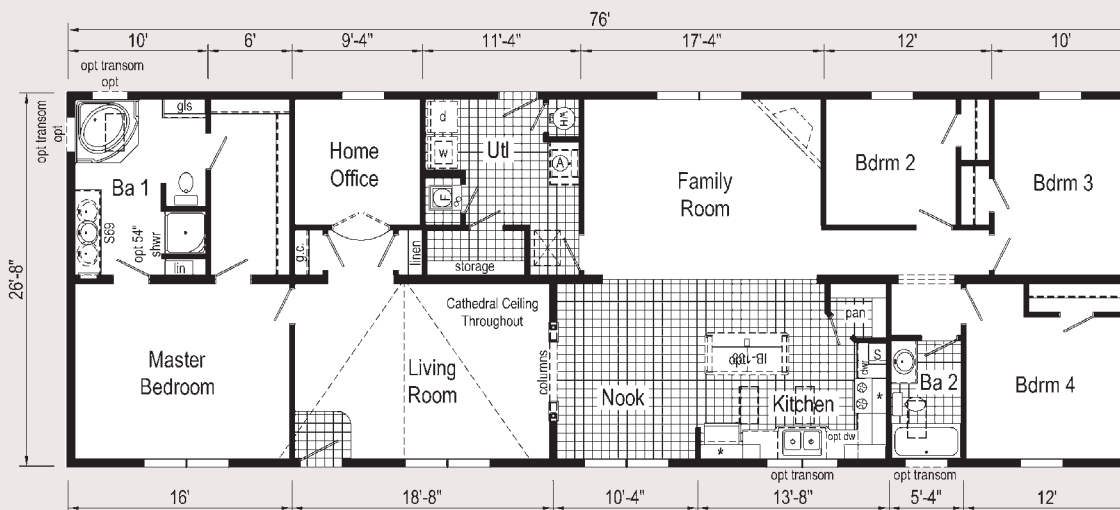
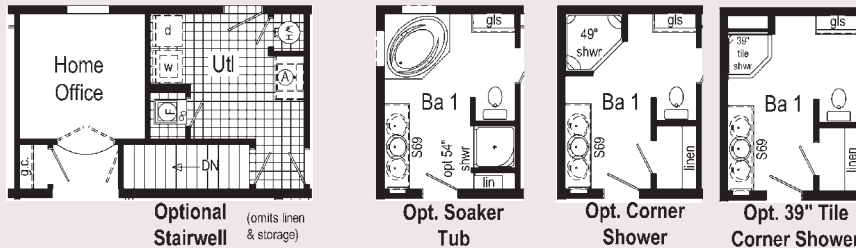
* = Opt. staggered overhead cabinet w/opt. flat ceiling.
 A = std frz spc or opt bench
 B = Water heater cavity must be altered, relocated or omitted for the state of Ohio.
 S32 = Opt. 32" Serenity lav base
 Opt. transom window(s) available with opt. 9' ceiling only.

CN192A 2876 (TL564A)

Approx. 2027 Sq. Ft.



Optional 1/2 Bath
(omits storage)
(not available w/opt. stairwell)



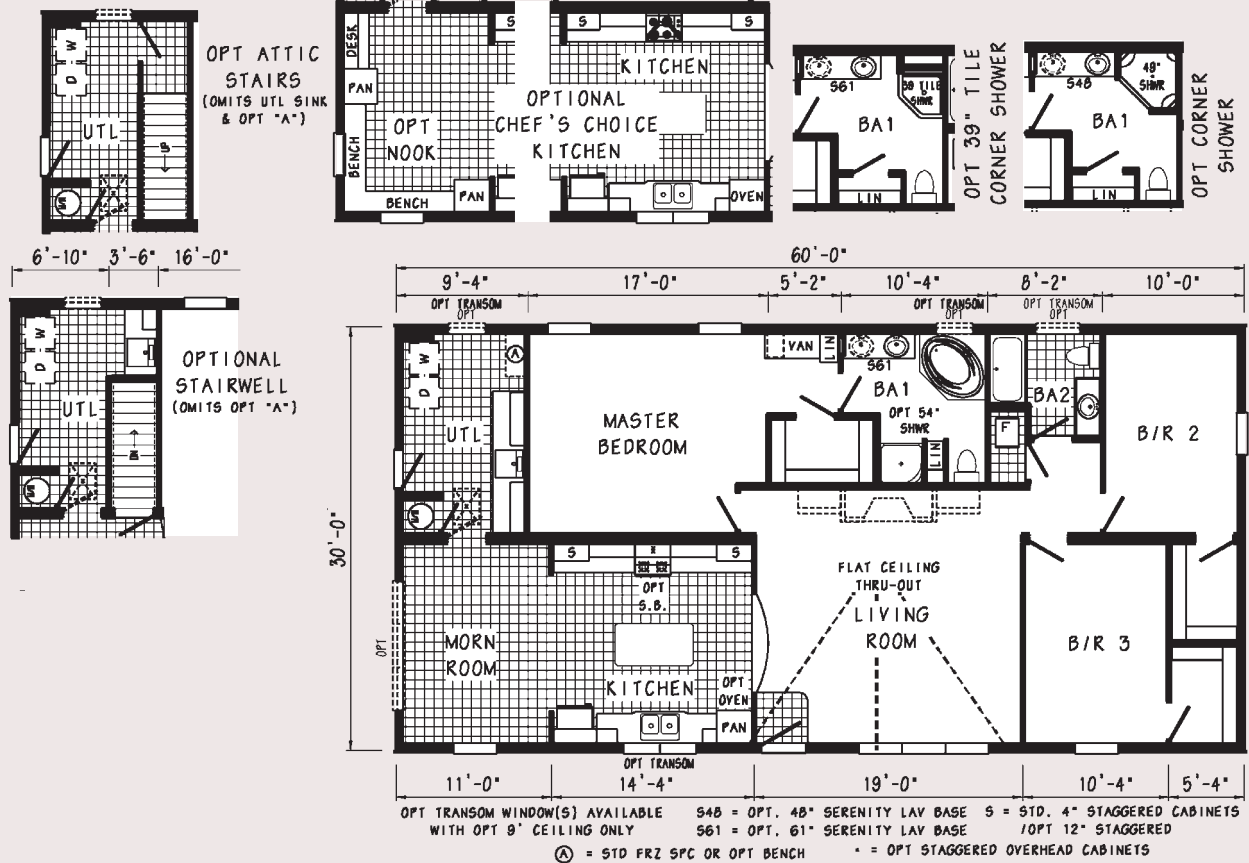
Opt. transom window(s) only available with opt. 9' ceiling
 * = Opt. staggered overhead cabinet w/opt. flat ceiling
 S = Std. 4" staggered cabinet /opt 12" staggered
 S69 = Opt. 69" Serenity lav base
 A = Std frz spc. opt utl sink or bench.



Some Features may be Optional

CW101A 3260 (TX510A)

Approx. 1800 Sq. Ft.



Cornerstone Modular Ranch - Included Features

10 Year Limited Structural Warranty

INTERIOR

Primed Smooth Drywall Throughout
Cathedral Ceiling Throughout
7'6" Sidewall Height
8' Flat Ceilings on CN124A, CN133A,
CN164A & CW101A
Stippled Ceiling
Textured Carpet with R2X Soil &
Stain Resistance
Rebond Carpet Pad
Tackstrip Carpet Installation
Foyer Entry with Vinyl Flooring
No-Wax Congoleum Vinyl Floor
Coverings
6-Arm Alabaster Glass Dining Room
Light
Alabaster Glass Pendant Nook Light
Glass Light Shades Throughout
Pre-Hung Door Jambs
Pinned Mortise Hinges
Metal Interior Passage Sets
Floor Mount Door Stops
Smoke Detectors with Battery Back-Up
Wire Shelving in Guest Closet

KITCHEN

KCMA Certified Cabinetry
Seneca Oak Cabinetry
Hardwood Flat Panel Cabinet Doors
Upgrade Cabinet Hardware
Concealed Cabinet Hinges
Crown Moulding on Overhead Cabinets
30" Staggered Height Overhead
Cabinets
Lined Overhead Cabinets
**Adjustable Shelves in Overhead
Cabinets**
Drawer Over Door Base Cabinets
Extended Sink Base on Selected Models
Deluxe Roller Guide Drawer System
Adjustable Center Shelf in Base Cabinets
25" High-Pressure Laminate Countertops
with Laminate Edging
4" Laminate Backsplash
No-Wax Congoleum Vinyl Floor
Coverings
Stainless Steel Sink - 33x19x7
Brushed Nickel Single Lever Faucet

APPLIANCES

30" Gas Range
Power Range Hood with Light
18 Cubic Foot, No-Frost Refrigerator

BATHS

60" One-Piece Fiberglass Tub/Showers
**Fiberglass Glamour Tub in Glamour
Baths**
**One-Piece Fiberglass Shower with
Glass Door in Glamour Baths**
Ceramic Tile Trimmed Tubs and Showers
Tub Overflows
1.6 Gallon Per Flush Elongated Toilets
Vitreous China Stool, Tank and Lid
Vitreous China Sinks with Overflows
and Pop-Up Drains
High-Pressure Laminate Countertops
with Laminate Edging
4" Laminate Backsplash
Lighted Vent Fan in Each Bath
Seneca Oak Cabinetry
Hardwood Flat Panel Cabinet Doors
Upgrade Cabinet Hardware
Concealed Cabinet Hinges
Base Shelf in Vanities
33" High Vanities
Brushed Nickel Faucets
Anti-Scald Valves on Showers

BEDROOMS

Ceiling Lights
Egress Window Each Bedroom
Wire Shelving in Wardrobes
30" Interior Passage Doors
Switched Light in All Walk-In Closets

UTILITIES

Washer and Dryer Area
200 AMP Electrical Service
Plumb and Wire for Washer
Wire and Vent for Dryer
40 Gallon Electric Water Heater with Pan
90 Plus High Efficiency Gas Furnace
Woodgrain Furnace Door

UTILITIES (cont.)

Perimeter Heat System
Air Return System in Ceiling
Fiberglass Heat Ducts
In-Floor Cross-Over Duct System
Copper Wiring Throughout
Main Water Line Shut-Off Valve
Water Shut-Off Valves where Accessible
Programmable Thermostat
One Exterior Water Faucet

INSULATION

R-19 Fiberglass Insulation in Walls
R-31 Avg. Blown Insulation in Ceiling

EXTERIOR

Patina Coach Light with Beveled Glass at
Front Door
Brushed Nickel Square Lantern Light at
Rear Door
Two GFI-Protected Exterior Receptacles
Vinyl Dutch Lap Siding
O.S.B. Sheathing Under Siding
Wind Wrap Air Infiltration Barrier
5/12 Shingle Roof with 10" Fixed Eaves
Architectural Shingles
Ridgevent Roof Ventilation System
Ice Shield
**38x82 Fiberglass 6-Panel Front Door
with Leaded Glass & Deadbolt Lock**
**34x82 Fiberglass 6-Panel Rear Door
with Deadbolt Lock**
**Vinyl Insulated Windows With Grids
and Low-E Glass**
12" Louvered Shutters on Front Door Side

CONSTRUCTION

2x10 Transverse Floor System on
16" Centers**
2x6 Exterior Walls on 16" Centers**
2x4 Interior Walls
40# Roof Load
90 Mile Exposure C Wind Load Design

****NOTE: Spacing for Framing Members
may vary due to Design Requirements.**



Cornerstone *Modular Ranch*



CN136A

Some Features may be Optional



Cornerstone Modular Ranch Homes are system-built in a controlled environment and comply with state and local building codes.

Patriot Home Sales, Inc.

3517 Lincoln Hwy. East

Kinzers, PA 17535

Phone: (717) 442-8868

sales@patriothomes.biz

Your purchase contract including options is with your retailer who is an independent contractor, not our agent, and is responsible totally for any alterations, exchanges, additions or attachments made in or to your home.

All descriptive representations of the products on this brochure are believed to be correct at the time of publication. However, due to continued product improvement and changes in suppliers design and production, accuracy cannot be guaranteed. Therefore, equipment colors, material specifications, prices and model availability are subject to change without notice. AP106372 7.5M 8/11