

PATRIOT HOME SALES, INC.
3517 Lincoln Highway East
Kinzers, PA 17535
717-442-8868
FAX 717-442-3073



CAPE SERIES

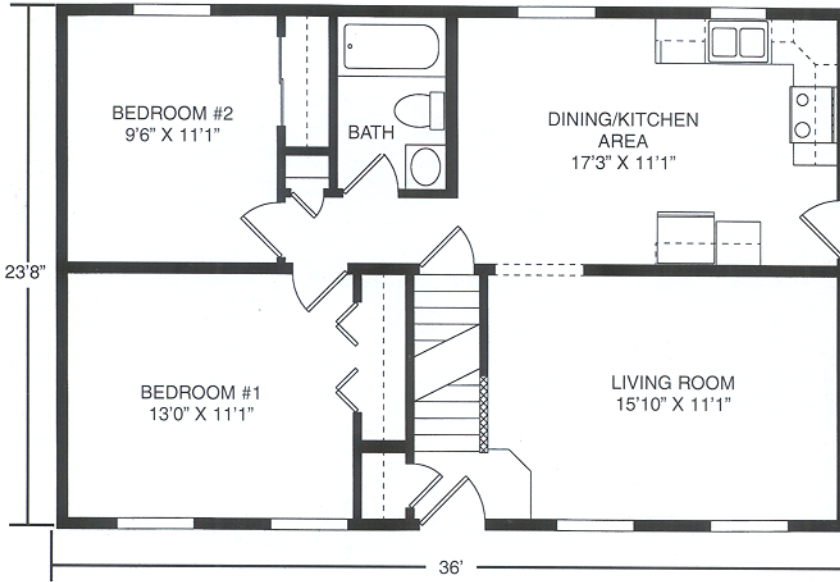
PROVINCE POINTE
A Leisure Escape to Comfort and Quality

MUNCY HOMES

The Bayview

Plan No. 169 ♦ 852 SQ. FT.

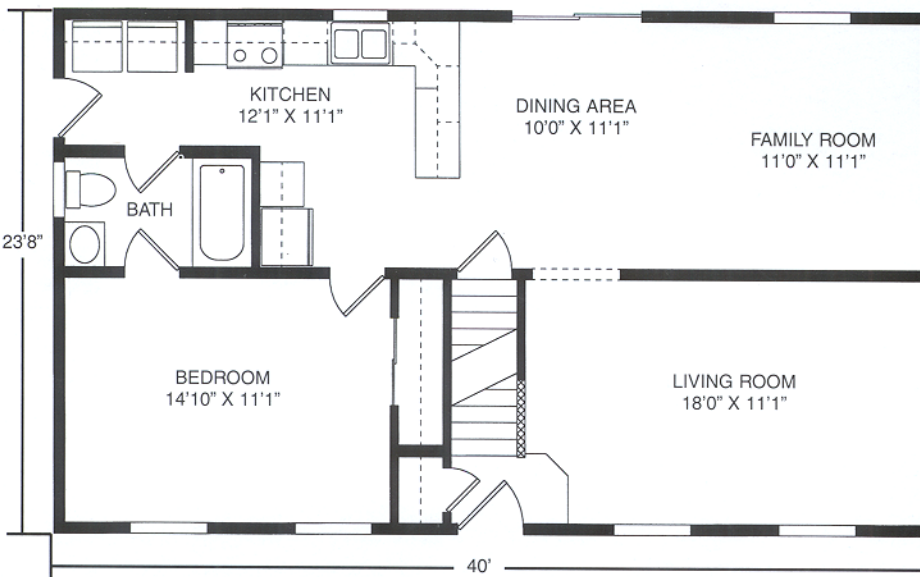
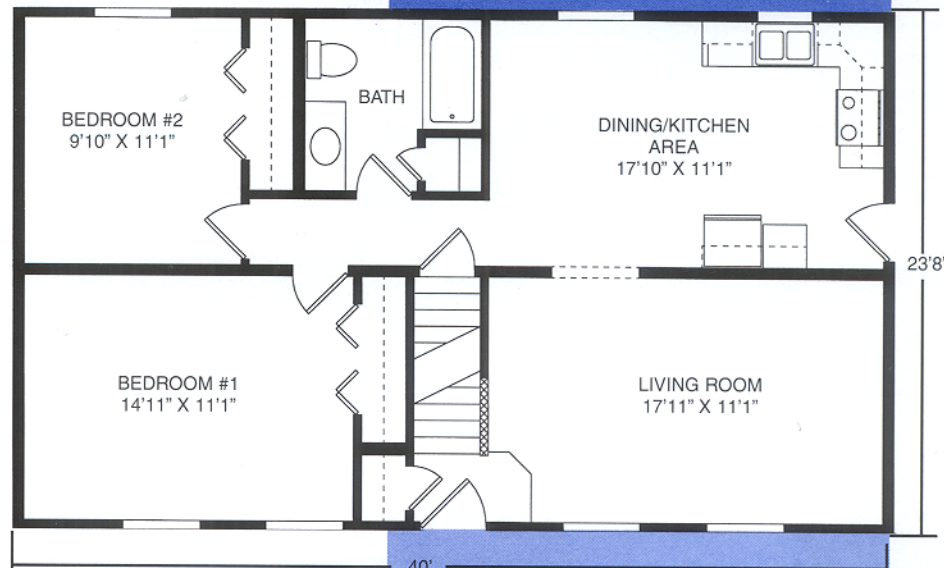
Welcome home to charming simplicity, featuring two bedrooms, full bath, large living room and bright, open dining room/kitchen area. Also available in 26' and 27'6" widths.



The Avalon

Plan No. 170 ♦ 947 SQ. FT.

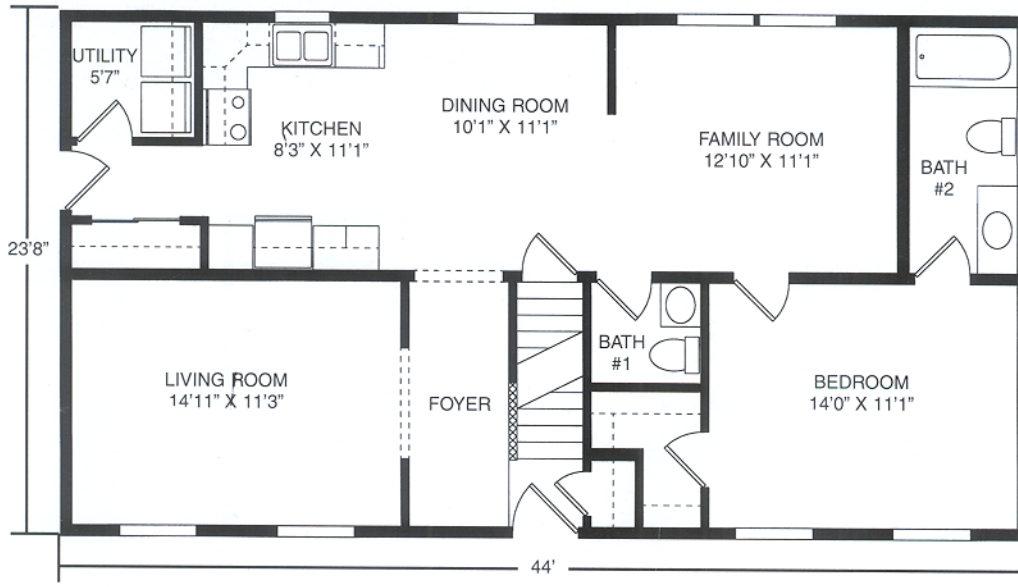
Reminiscent of New England, this quaint home offers two spacious bedrooms, full bath, large living room and delightful dining room/kitchen area. Also available in 26' and 27'6" widths.



The Marshfield

Plan No. 171 ♦ 947 SQ. FT.

An abundance of living space is the hallmark of this delightful home which features a generous living room, an expansive family room that flows into an open dining area, kitchen, bath and bedroom. Also available in 26' and 27'6" widths.

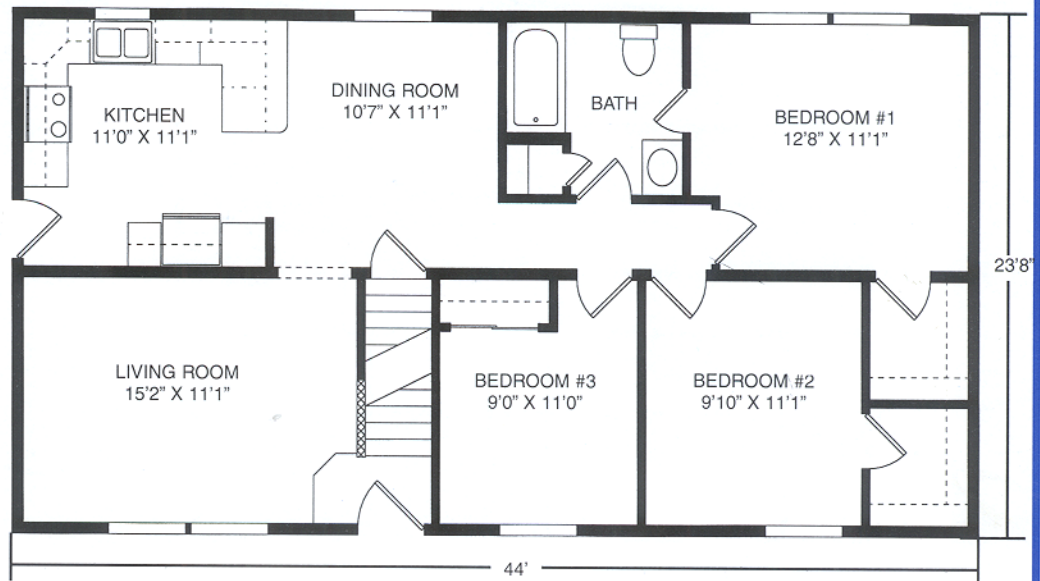


The Brockport

Plan No. 172 ♦ 1041 SQ. FT.
 Enjoy comfort and convenience in perfect harmony in this enchanting home offering a master bedroom suite with full bath, welcoming foyer, large living room and family room, open dining room and kitchen and easily accessible utility room. Also available in 26' and 27'6" widths.

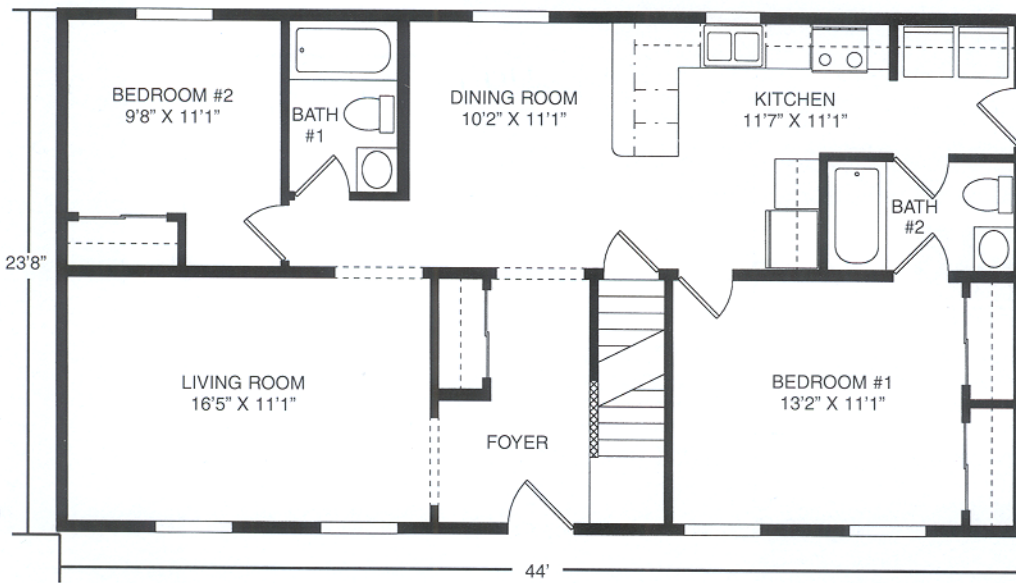
The Belhaven

Plan No. 173 ♦ 1041 SQ. FT.
 A true family home with three bedrooms, large bath, eat-in kitchen, sizable living room and dining room that will comfortably accommodate the whole gang. Also available in 26' and 27'6" widths.



The Fenwick

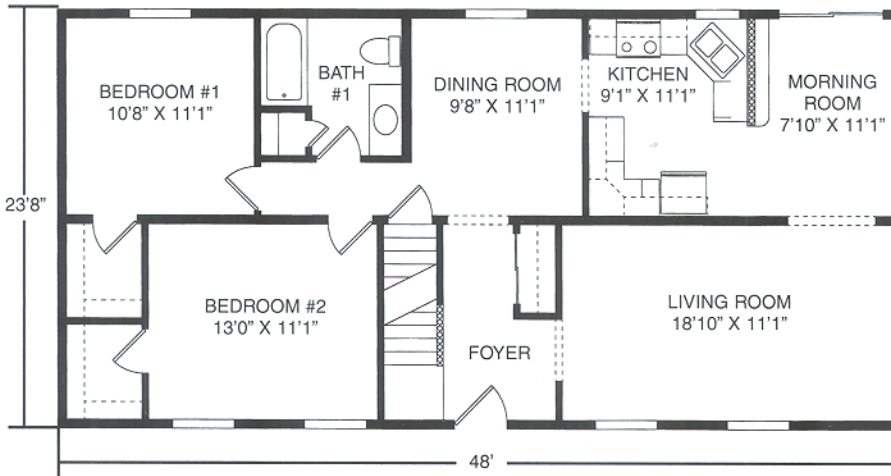
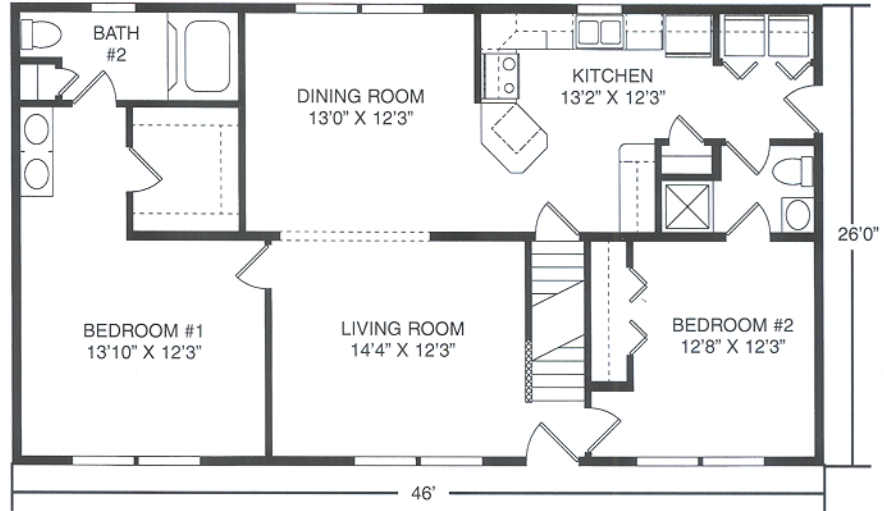
Plan No. 174 ♦ 1041 SQ. FT.
 As picturesque inside as outside, this old-fashioned cape features a master bedroom suite with adjoining bath, second bedroom, full bath, entrance foyer, comfortable living room, dining room, a spacious kitchen, and generous closet space. Also available in 26' and 27'6" widths.



The Belmont

Plan No. 275 ♦ 1196 SQ. FT.

Warm and cozy with a truly elegant touch, including master bedroom suite with private bath, spacious living room features over-sized entrance into dining room, plus kitchen with adjoining utility area. Also available in 27'6" width.



The Corolla

Plan No. 176 ♦ 1136 SQ. FT.

Brilliant facets make this home a true jewel with a large welcoming foyer leading into the expansive living room or dining room, a bright kitchen opening into a glorious morning room, two big bedrooms, full bath, and plentiful closet space. Also available in 26' and 27'6" widths.

Crawl space option available in all plans.

MUNCY HOMES

1567 PA ROUTE 442, P.O. BOX 325 • MUNCY, PA 17756

(570) 546-2261

www.muncyhomes.com

MEMBER:

MODULAR
BUILDING SYSTEMS ASSOCIATION
BUILDING FOR TOMORROW

Due to our continuing program of Product Improvement, Plans, Specifications, Materials and Prices are subject to change without notice.

Renderings and floor plans are promotional illustrations that approximate size and may depict optional or suggested features.

5M SVP 2/02

Your Builder/Developer

THE BUILDER/DEVELOPER IS AN INDEPENDENT BUSINESSMAN, NOT AN AGENT OF MUNCY HOMES. From time to time, Builder/Developer may perform service work at the request of Muncy Homes, but in doing so Builder/Developer is still an independent contractor and is alone responsible for the quality of his work. MUNCY HOMES SHALL HAVE NO RESPONSIBILITY OR LIABILITY FOR ANY ACT OR OMISSION OF BUILDER/DEVELOPER OR ANY MATERIAL PROVIDED BY BUILDER/DEVELOPER, UNDER ANY CIRCUMSTANCES.