

**PATRIOT HOME SALES**  
3517 Lincoln Hwy. East  
Kinzers, PA 17535  
717-442-8868  
FAX 717-442-9070

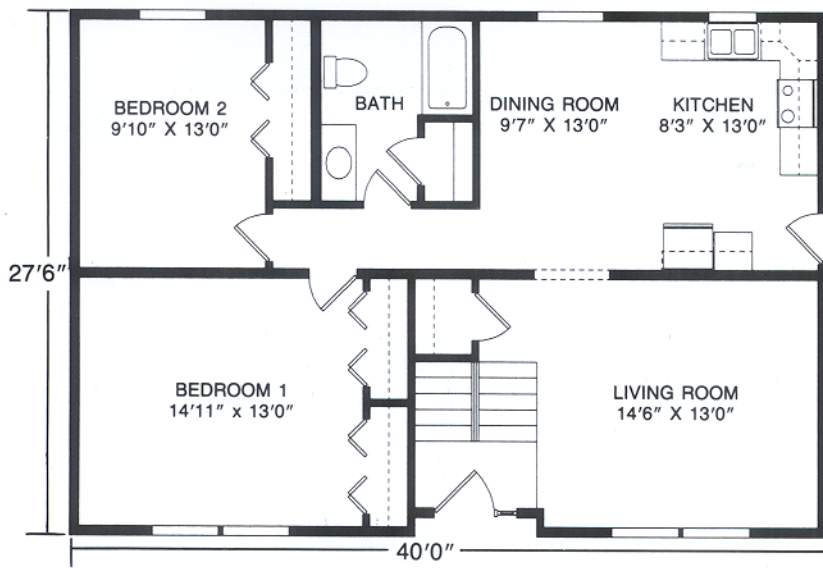


**R A I S E D R A N C H S E R I E S**

***PARK AVENUE***

*Spacious Living in Elegant Design*

**MUNCY HOMES**



## The Bedford

### RAISED RANCH

Plan No. 380 ■ 1100 SQ. FT.

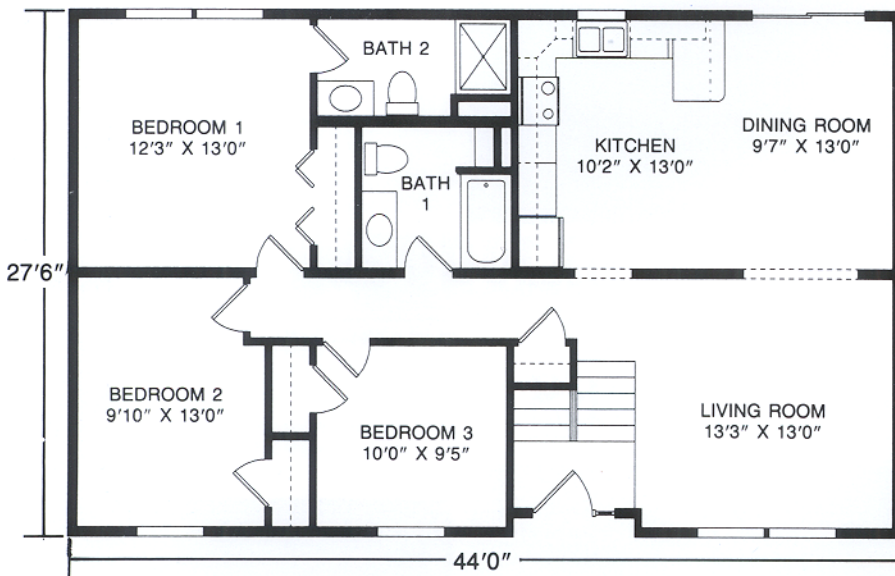
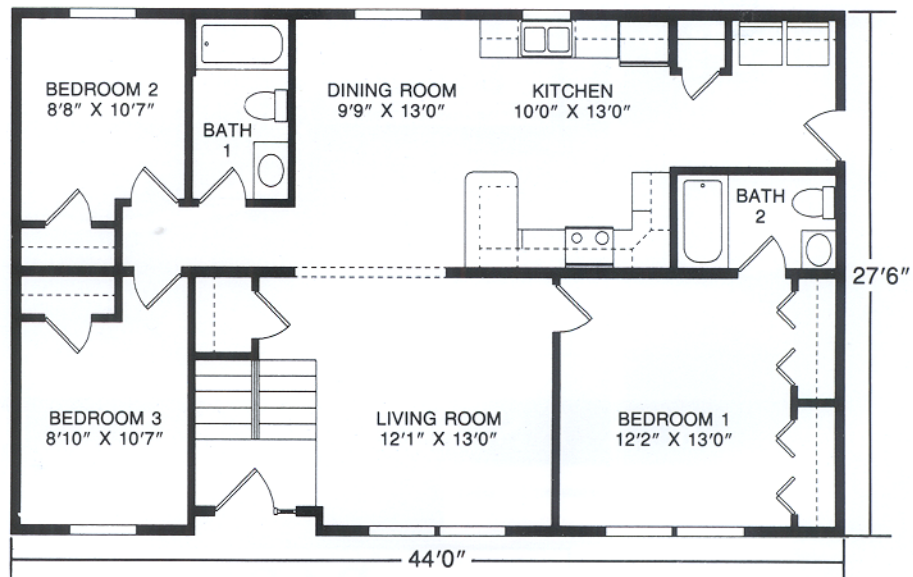
Two spacious bedrooms with ample storage and large living room make this the ideal starter home. Also available in 26' width.

## The Easton

### RAISED RANCH

Plan No. 381 ■ 1210 SQ. FT.

Space and privacy with master bedroom suite with private bath and his and her closets, plus two additional bedrooms and full bath. Also available in 26' width.

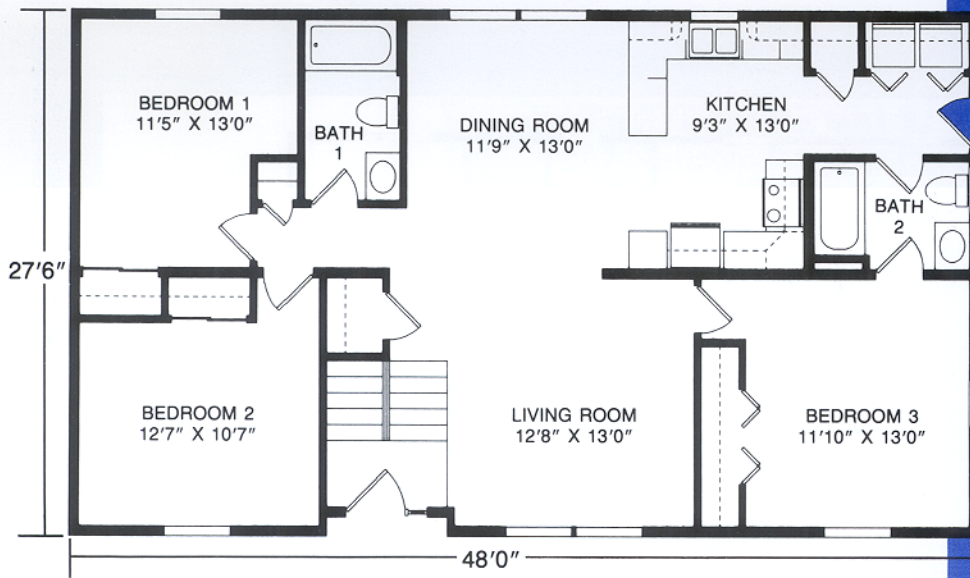


## The Lynnwood

### RAISED RANCH

Plan No. 382 ■ 1210 SQ. FT.

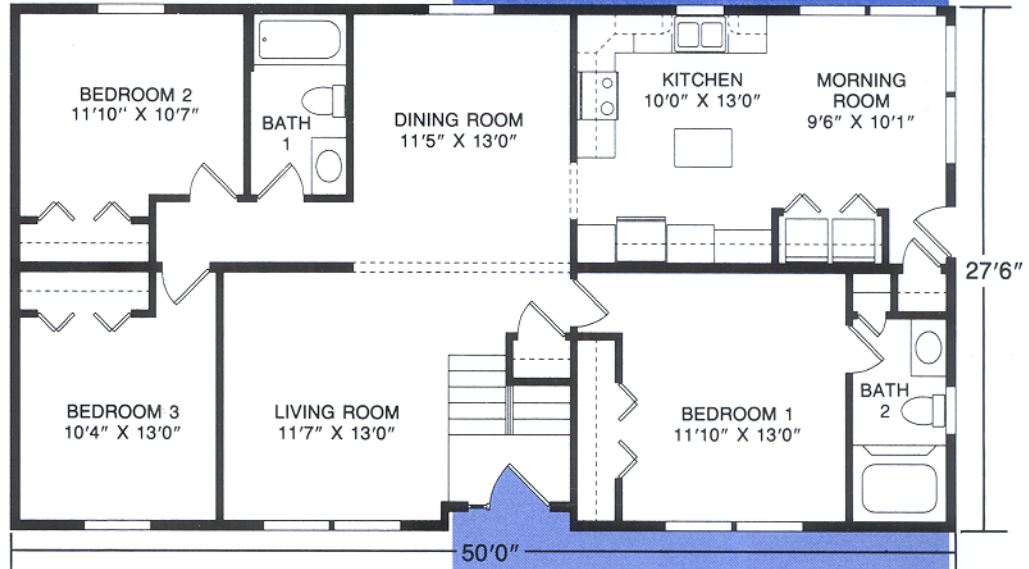
Master bedroom suite with private bath, two additional bedrooms and full bath offer all the space and convenience any family needs. Also available in 26' width.



## *The Ashbury*

### RAISED RANCH

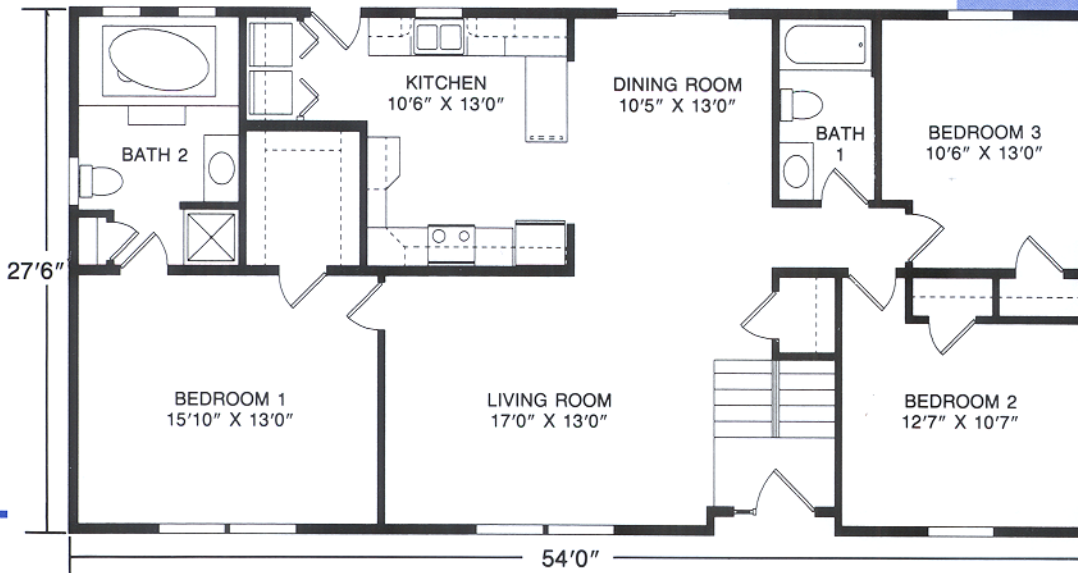
**Plan No. 387** ■ 1320 SQ. FT.  
Efficiently designed to include the spacious dining room and living room along with master bedroom with full bath and first floor utility area. Also available in 26' width.



## *The Kingwood*

### RAISED RANCH

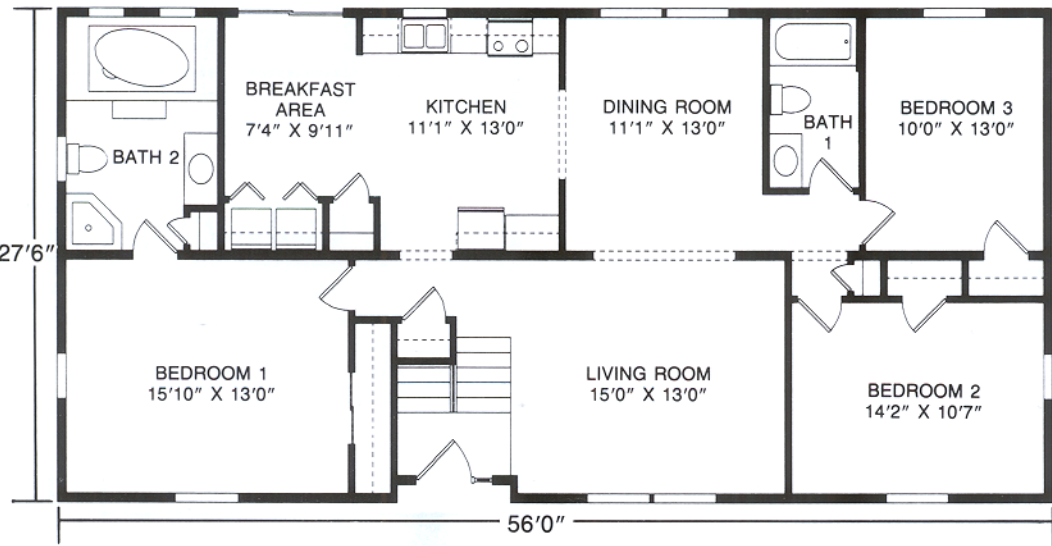
**Plan No. 388** ■ 1375 SQ. FT.  
Large kitchen with island and morning room insure this attractive design could be the home for you. Other features include master bedroom with adjoining bath, utility area and formal dining room. Also available in 26' width.



## *The Oxford*

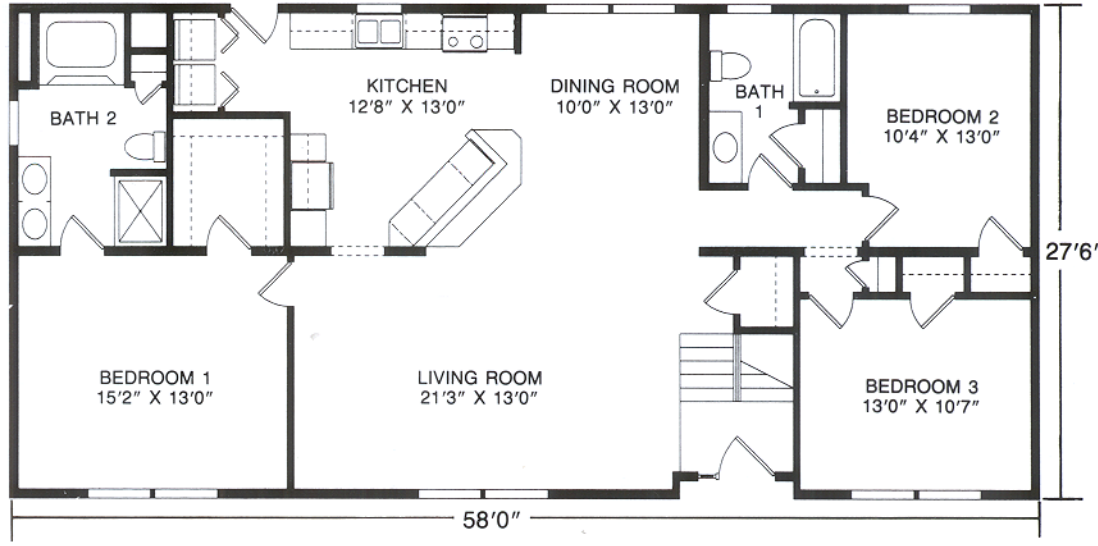
### RAISED RANCH

**Plan No. 389** ■ 1485 SQ. FT.  
Relax in style in this home featuring master bedroom with luxurious bath, convenient first floor utility area, and unique kitchen with formal dining room. Also available in 26' width.

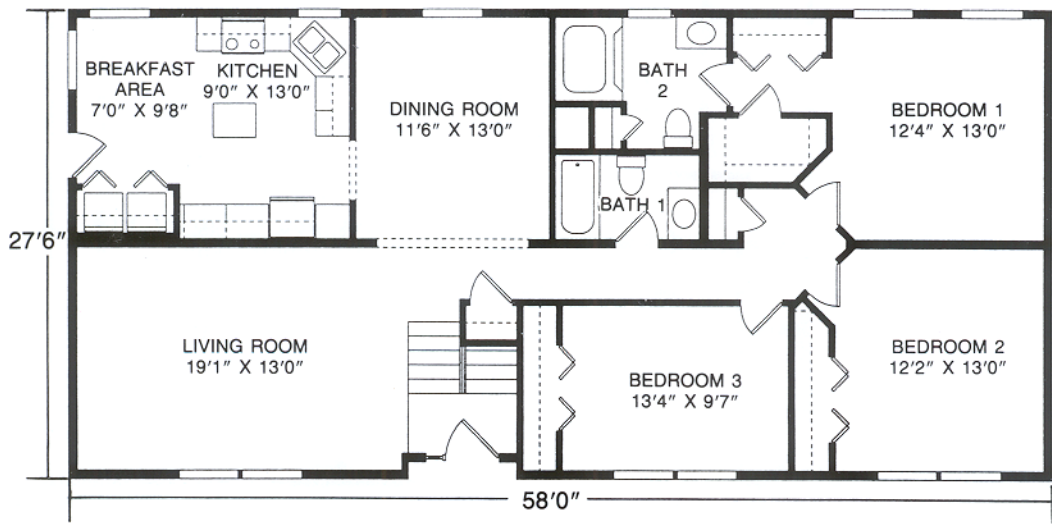


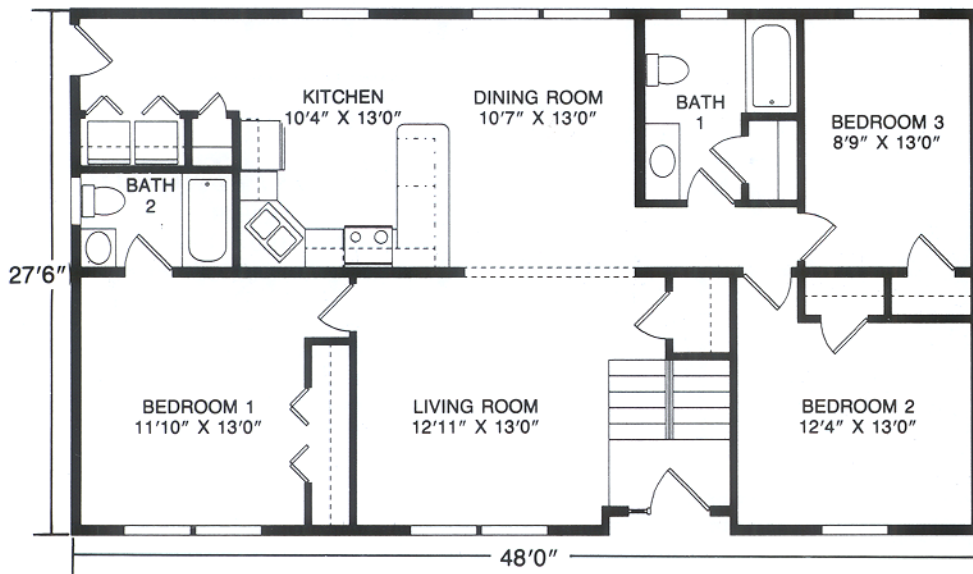
*The Arlington*  
**RAISED RANCH**  
**Plan No. 390** ■ 1540 SQ. FT.  
 Luxurious master bath compliments the spacious master bedroom of this plan which also features dining room and large kitchen/breakfast area. Also available in 26' width.

*The Lexington*  
**RAISED RANCH**  
**Plan No. 391** ■ 1595 SQ. FT.  
 Open living room, dining room and kitchen high-lite this beautiful design that includes large master bedroom with adjoining bath, snack bar and convenient utility area. Also available in 26' width.



*The Bradford*  
**RAISED RANCH**  
**Plan No. 392** ■ 1595 SQ. FT.  
 Large, functional kitchen and breakfast area design is complimented by the traditional, formal living room and large master bedroom with abundant closet space and full bath.





## The Cambridge

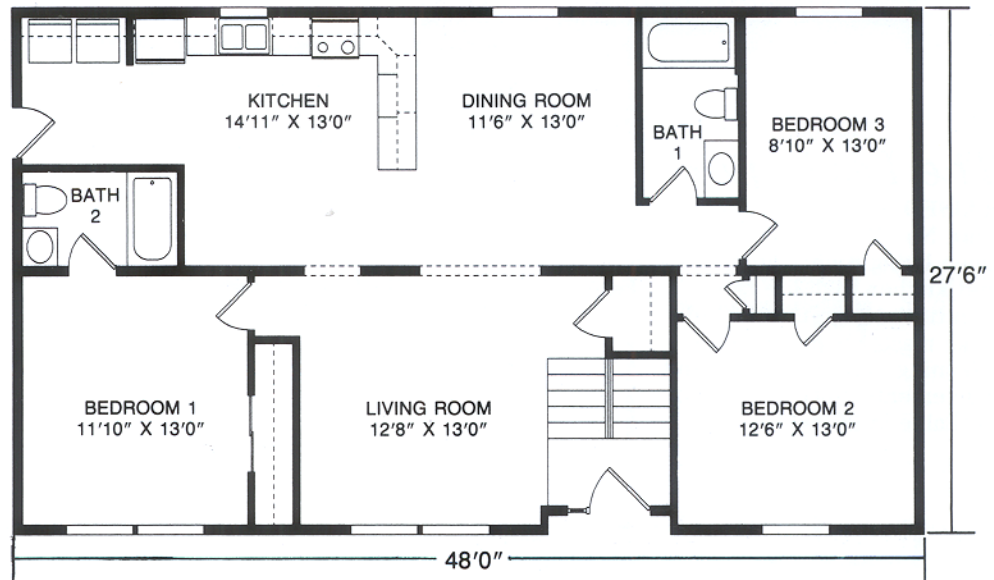
### RAISED RANCH

**Plan No. 384** ■ 1320 SQ. FT.  
 Perfect for family living with master bedroom suite with private bath plus two additional bedrooms and full bath. Also available in 26' width.

## The Madison II

### RAISED RANCH

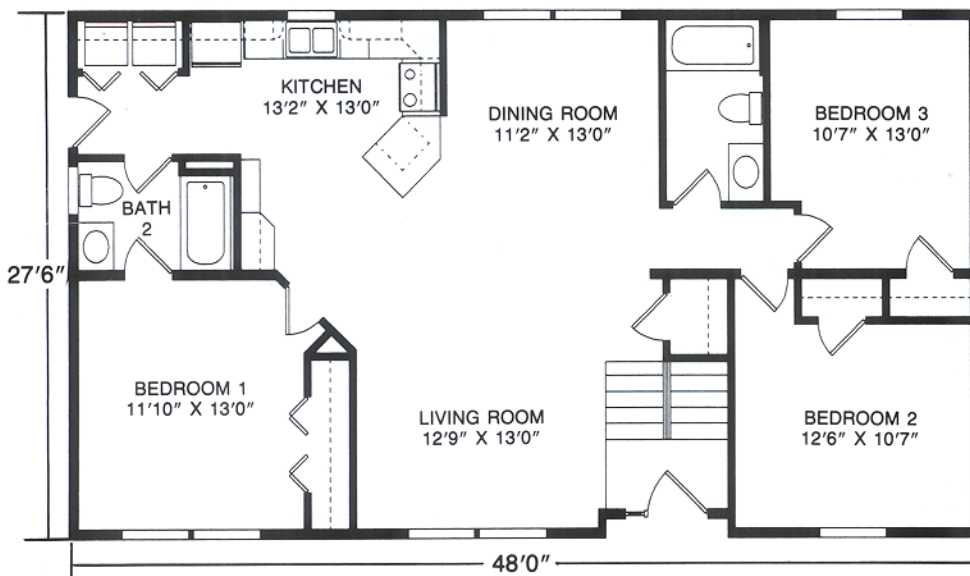
**Plan No. 385** ■ 1320 SQ. FT.  
 The best of both worlds... dine in the cozy kitchen or enjoy the immense space created by the open living room and dining room. Also available in 26' width.

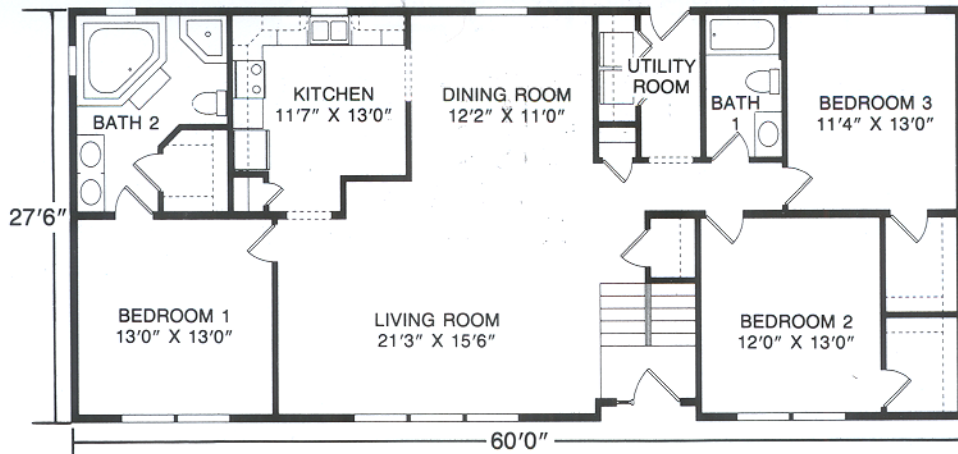


## The Vernon

### RAISED RANCH

**Plan No. 386** ■ 1320 SQ. FT.  
 Spacious, family living including snack bar, two full baths and utility closet. Also available in 26' width.

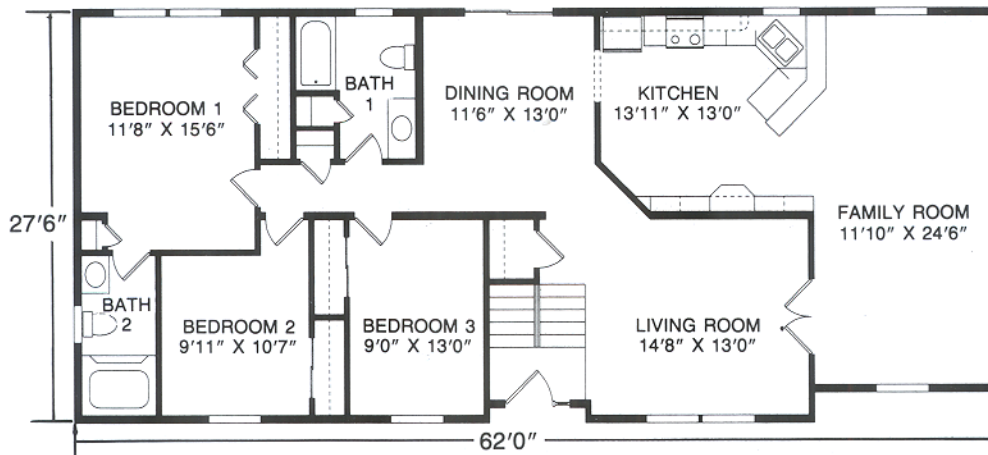




### *The Clemson*

**RAISED RANCH**  
**Plan No. 393 ■ 1650 SQ. FT.**

Enjoy the immense space created by the open living room and dining room. Features large master bedroom with elegant private bath, utility room and large bedroom walk-in closets. Also available in 26' width.



### *The Jamestown*

**RAISED RANCH**  
**Plan No. 394 ■ 1705 SQ. FT.**

Enjoy exceptional living with grand family room, formal living room, large kitchen with breakfast/snack bar, and master bedroom suite with private bath. Also available in 26' width.

# MUNCY HOMES

1567 PA ROUTE 442, P.O. BOX 325 • MUNCY, PA 17756  
 (570) 546-2261  
 www.muncyhomes.com

MEMBER:



*Due to our continuing program of Product Improvement, Plans, Specifications, Materials and Prices are subject to change without notice.*

*Renderings and floor plans are promotional illustrations that approximate size and may depict optional or suggested features.*

5M SVP 8/01

### *Your Builder/Developer*

**PATRIOT HOME SALES, INC.**  
 3517 Lincoln Highway East  
 Kinzers, PA 17330  
 717-442-8868  
 FAX 717-442-3073

THE BUILDER/DEVELOPER IS AN INDEPENDENT BUSINESSMAN, NOT AN AGENT OF MUNCY HOMES. From time to time, Builder/Developer may perform service work at the request of Muncy Homes, but in doing so Builder/Developer is still an independent contractor and is alone responsible for the quality of his work. MUNCY HOMES SHALL HAVE NO RESPONSIBILITY OR LIABILITY FOR ANY ACT OR OMISSION OF BUILDER/DEVELOPER OR ANY MATERIAL PROVIDED BY BUILDER/DEVELOPER, UNDER ANY CIRCUMSTANCES.