

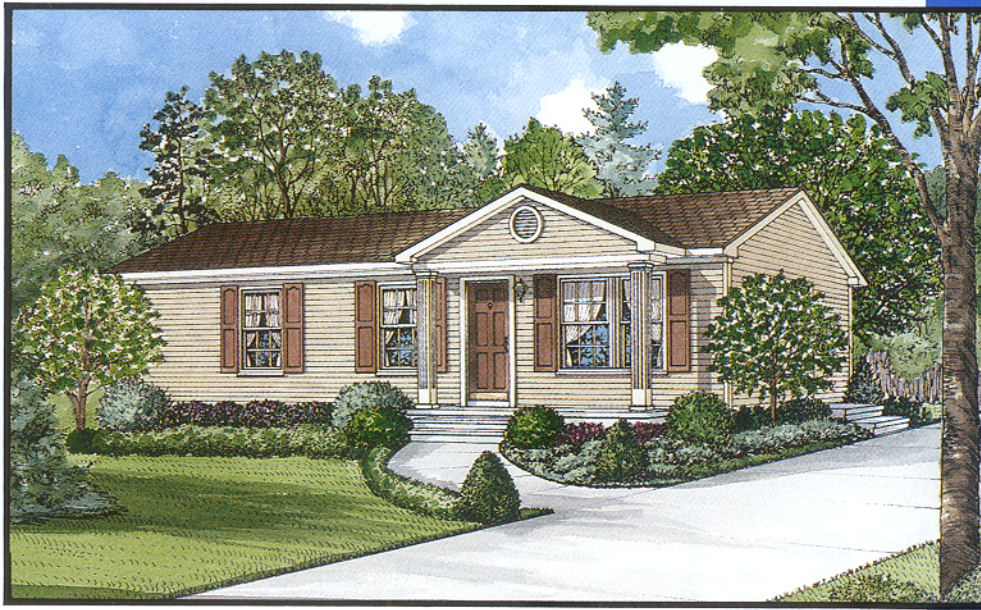


R A N C H   S E R I E S

*FIRST AVENUE*

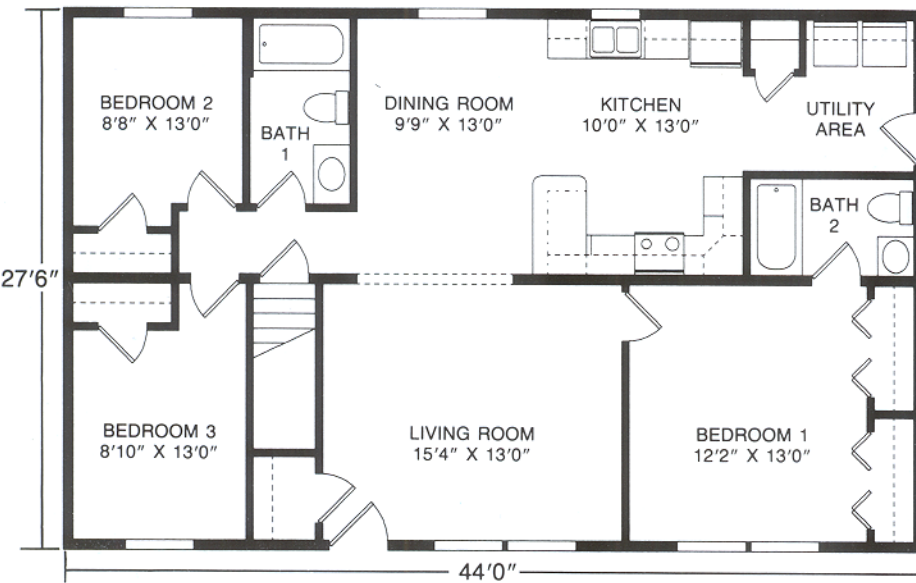
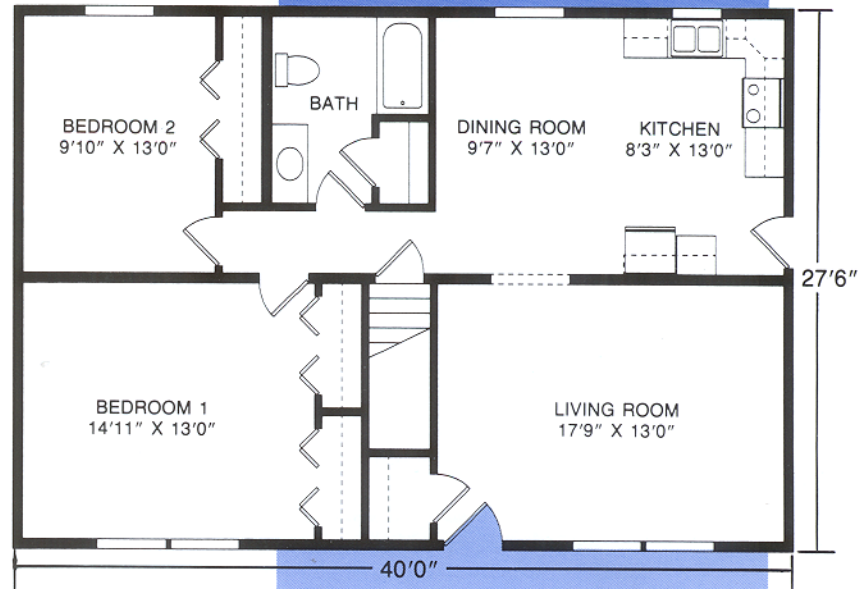
*Where Dreams Become Reality*

MUNCY HOMES



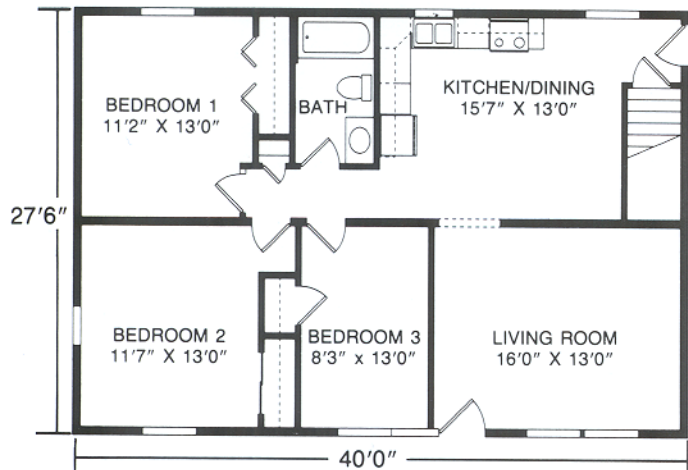
## The Bedford

**Plan No. 341** ■ 1100 SQ. FT.  
 Two spacious bedrooms with ample storage and large living room make this the ideal starter home. Also available in 26' width.



## The Easton

**Plan No. 344** ■ 1210 SQ. FT.  
 Space and privacy with master bedroom suite with private bath and his and her closets, plus two additional bedrooms and full bath. Also available in 26' width.

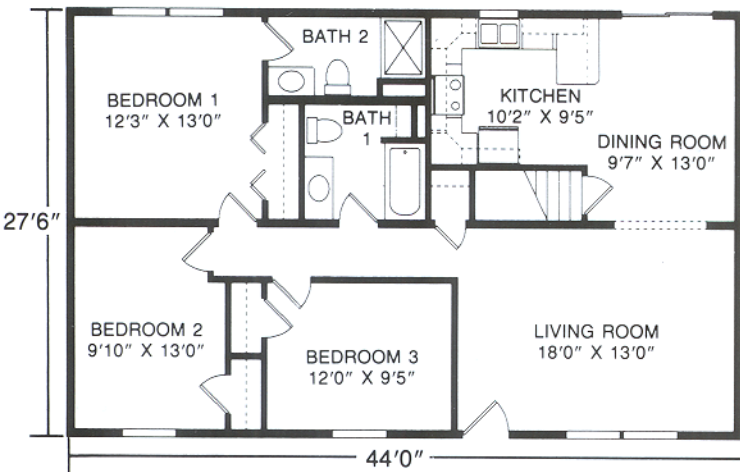
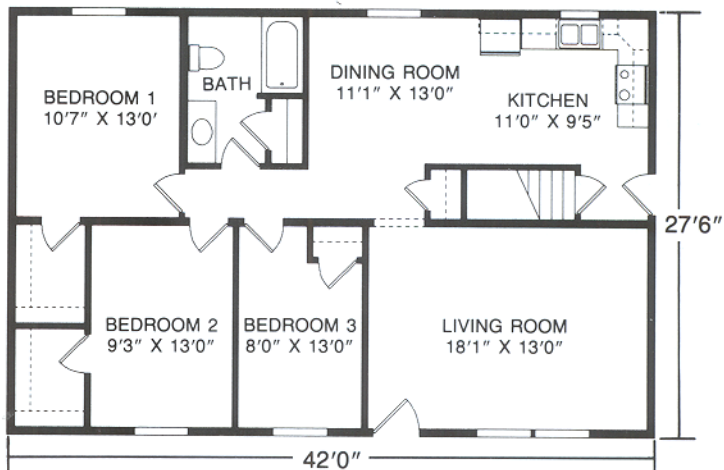


## The Newport

**Plan No. 342** ■ 1100 SQ. FT.  
Large kitchen/dining area in a design that features three bedrooms and full bath. Also available in 26' width.

## The Suffolk

**Plan No. 343** ■ 1155 SQ. FT.  
Three spacious bedrooms, generous closet space and large bathroom are the hi-lite of this practical home. Also available in 23'8" and 26' width.

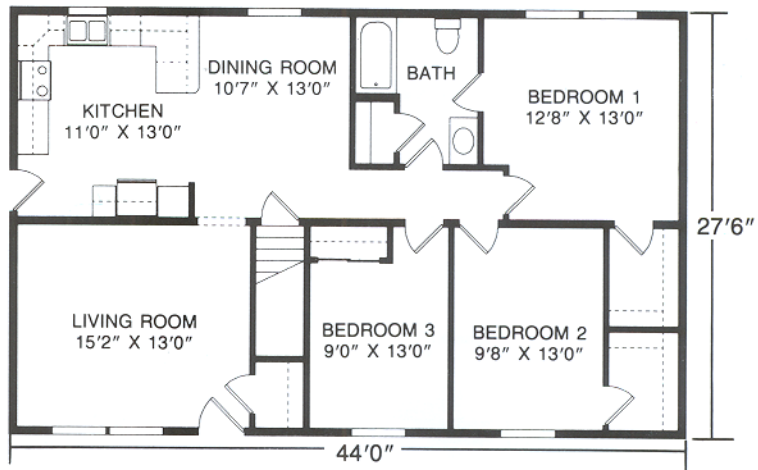


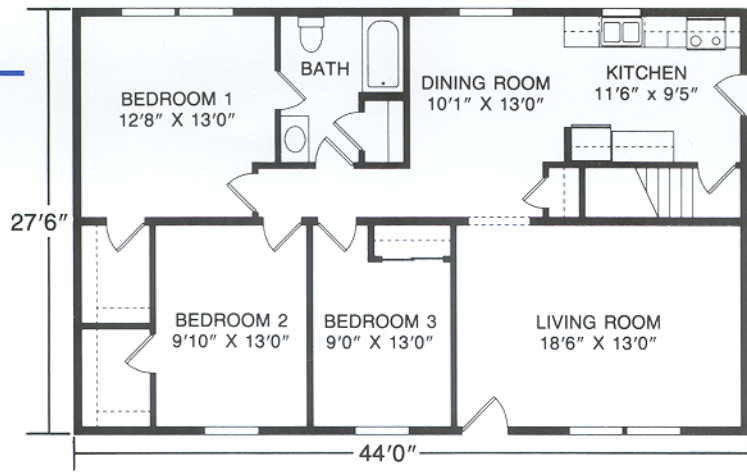
## The Lynnwood

**Plan No. 345** ■ 1210 SQ. FT.  
Master bedroom suite with private bath, two additional bedrooms and full bath offer all the space and convenience any family needs. Also available in 26' width.

## The Fairfield

**Plan No. 346** ■ 1210 SQ. FT.  
Three bedrooms, walk-in closets and spacious kitchen and dining room makes everyone a winner with this design. Also available in 26' width.



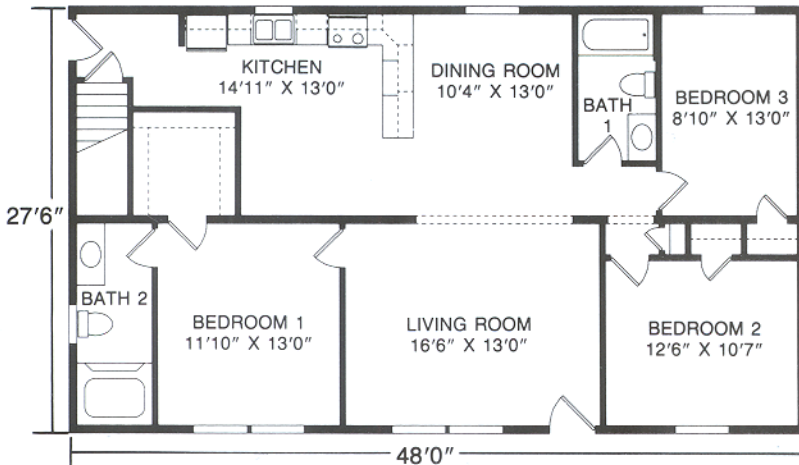
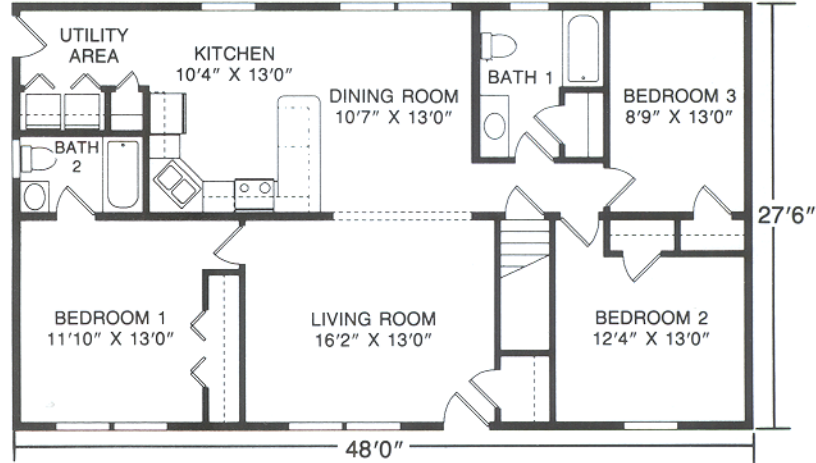


## The Ashland

**Plan No. 347** ■ 1210 SQ. FT.  
 Enjoy comfortable living with three bedrooms, walk-in closets, large bath and spacious living room, dining area and kitchen. Also available in 23'8" and 26' width.

## The Cambridge

**Plan No. 348** ■ 1320 SQ. FT.  
 Perfect for family living with master bedroom suite with private bath plus two additional bedrooms and full bath. Also available in 26' width.

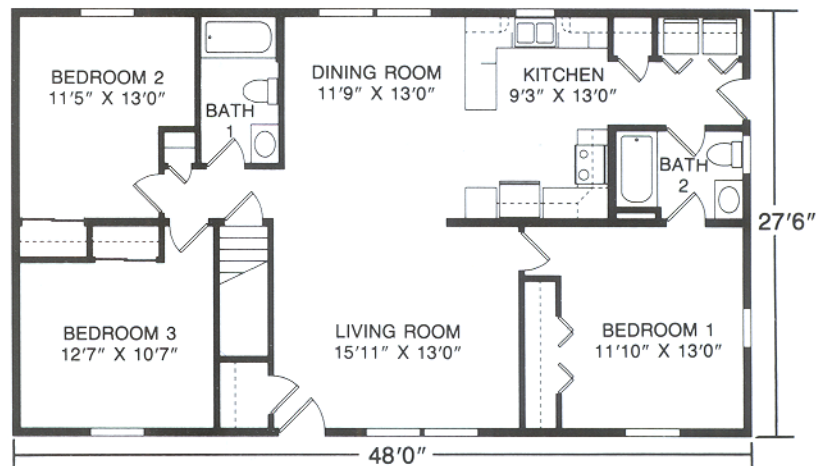


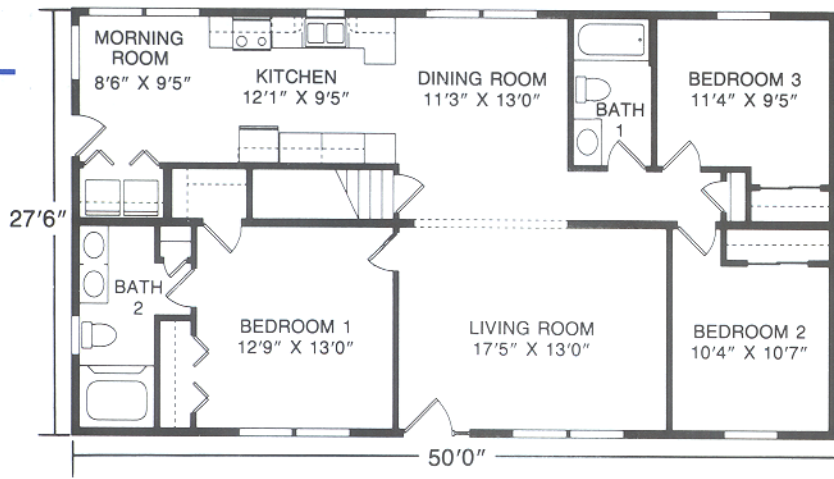
## The Madison II

**Plan No. 349** ■ 1320 SQ. FT.  
 The best of both worlds... dine in the cozy kitchen or enjoy the immense space created by the open living room and dining room. Also available in 26' width.

## The Ashbury

**Plan No. 351** ■ 1320 SQ. FT.  
 Efficiently designed to include the spacious dining room and living room along with master bedroom with full bath and first floor utility area. Also available in 26' width.



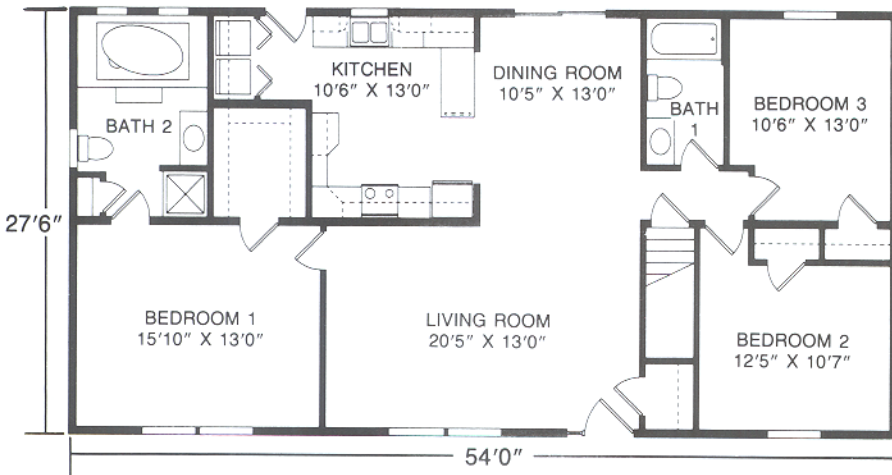
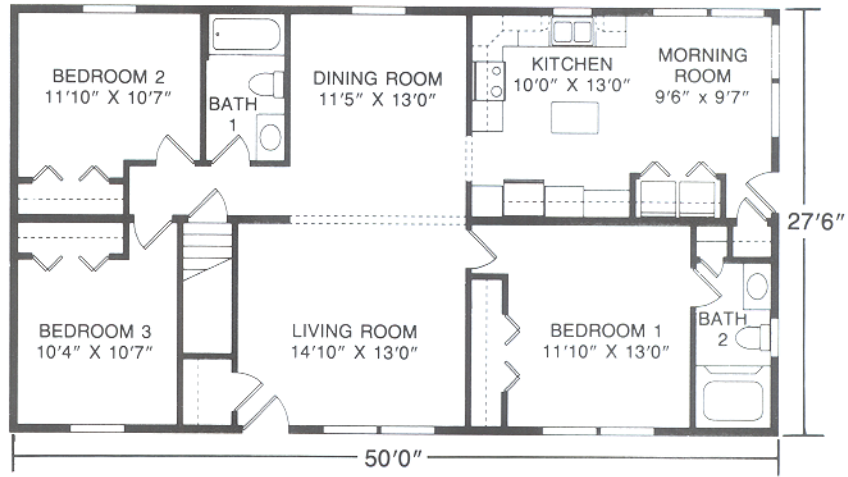


## The Braxton

**Plan No. 352** ■ 1375 SQ. FT.  
 Spacious living room and dining room accent this design which includes galley kitchen with morning room, utility closet and double vanity in the master bath. Also available in 26' width.

## The Kingwood

**Plan No. 353** ■ 1375 SQ. FT.  
 Large kitchen with island and morning room insure this attractive design could be the home for you. Other features include master bedroom with adjoining bath, utility area and formal dining room. Also available in 26' width.

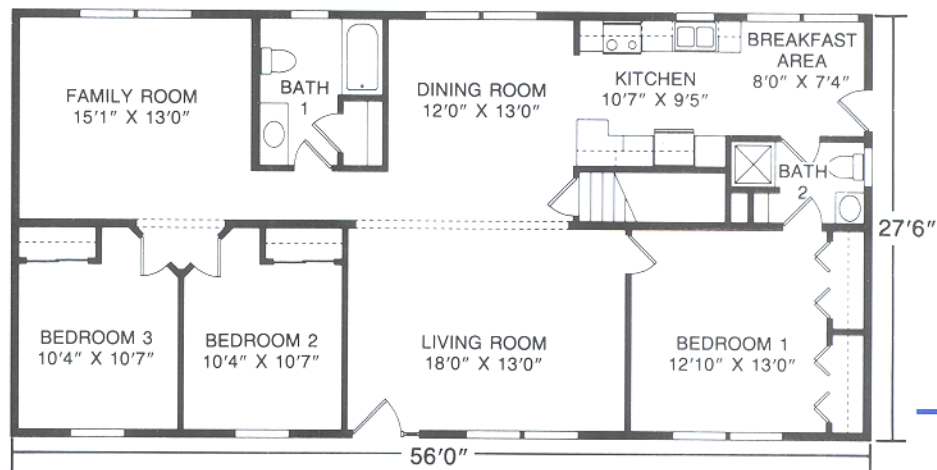


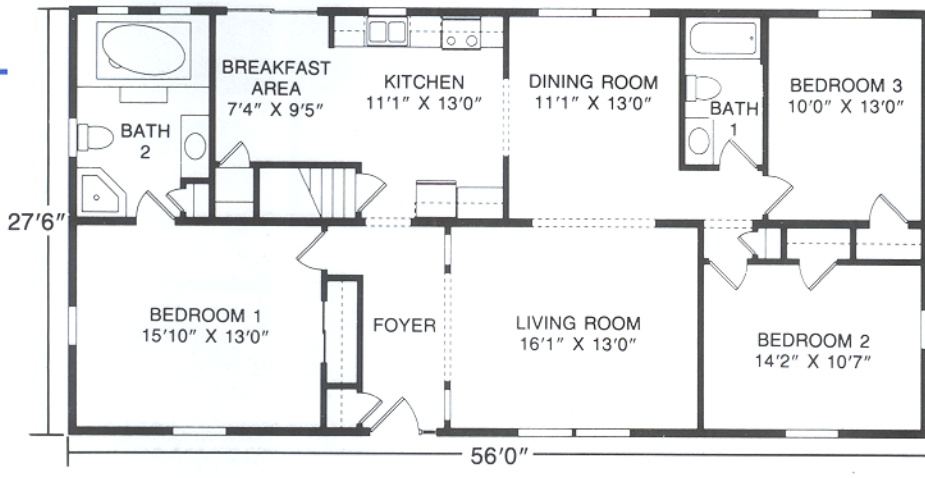
## The Oxford

**Plan No. 354** ■ 1485 SQ. FT.  
 Relax in style in this home featuring master bedroom with luxurious bath, convenient first floor utility area, and unique kitchen with formal dining room. Also available in 26' width.

## The Hartford

**Plan No. 355** ■ 1540 SQ. FT.  
 Comfortable, easy living with convenient kitchen and breakfast area, large living room, and separate family room to relax at the end of the day. Also available in 26' width.



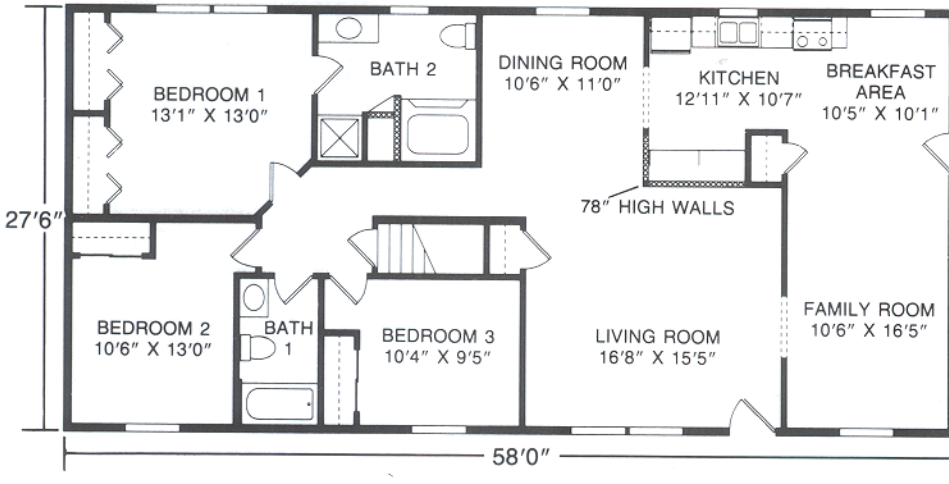
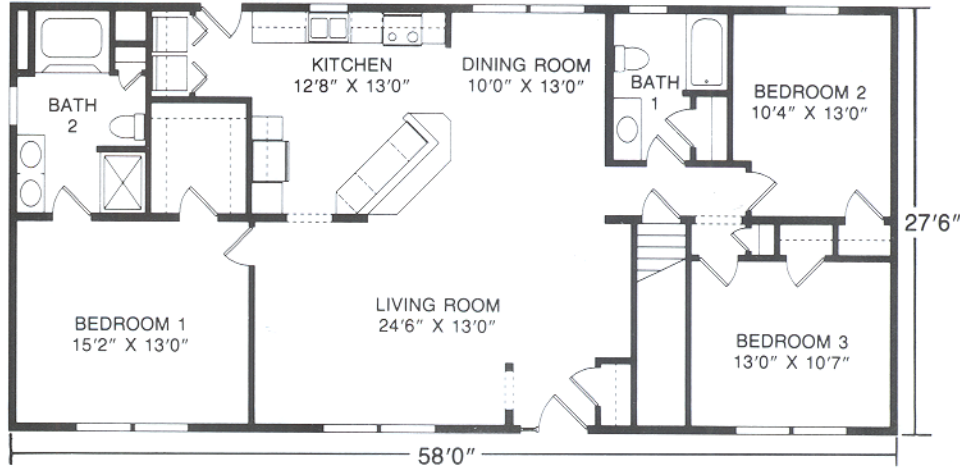


## The Arlington

**Plan No. 356** ■ 1540 SQ. FT.  
 Luxurious master bath compliments the spacious master bedroom of this plan which also features a formal foyer, dining room and large kitchen/breakfast area. Also available in 26' width.

## The Lexington

**Plan No. 357** ■ 1595 SQ. FT.  
 Open living room, dining room and kitchen high-lite this beautiful design that includes large master bedroom with adjoining bath, snack bar and convenient utility area. Also available in 26' width.

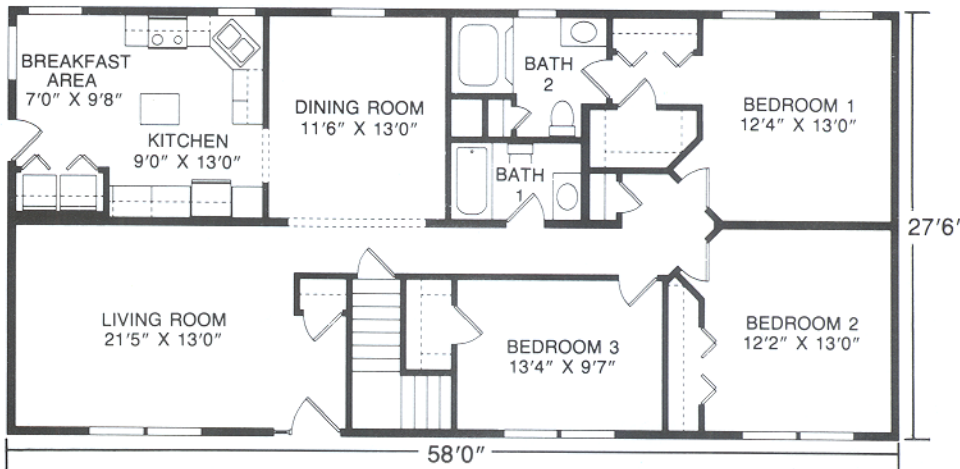


## The Springfield

**Plan No. 358** ■ 1595 SQ. FT.  
 Master bedroom with his and her closets and adjoining bathroom, convenient kitchen with breakfast area and large living room with separate family room are a few of the features of this dynamic design. Also available in 26' width.

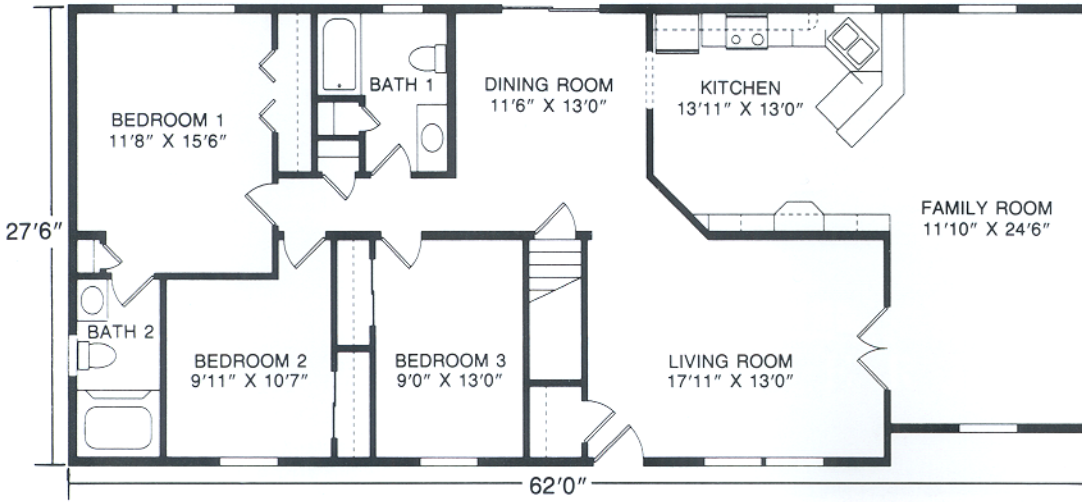
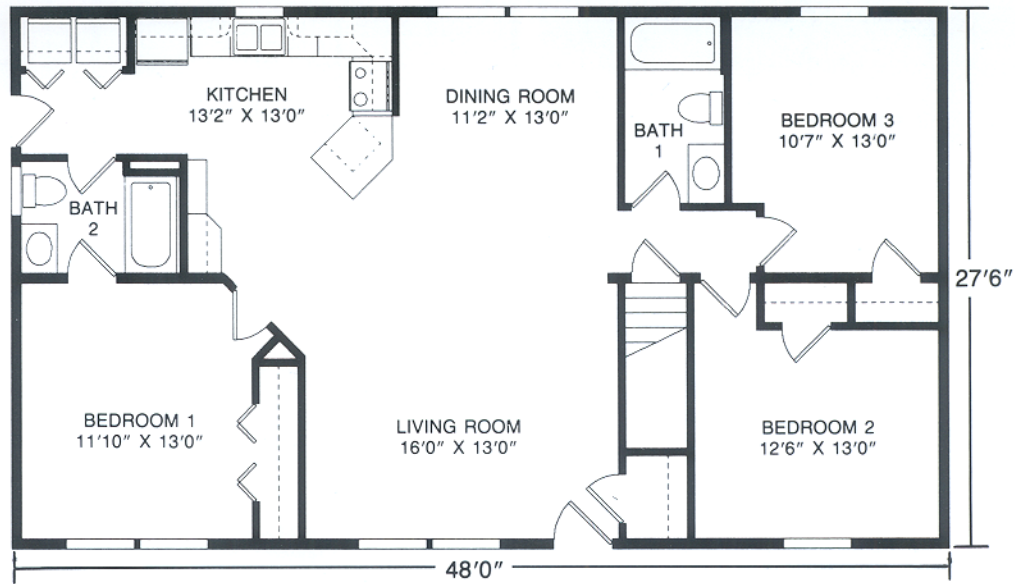
## The Bradford

**Plan No. 359** ■ 1595 SQ. FT.  
 Large, functional kitchen and breakfast area design is complimented by the traditional, formal living room and large master bedroom with abundant closet space and full bath.



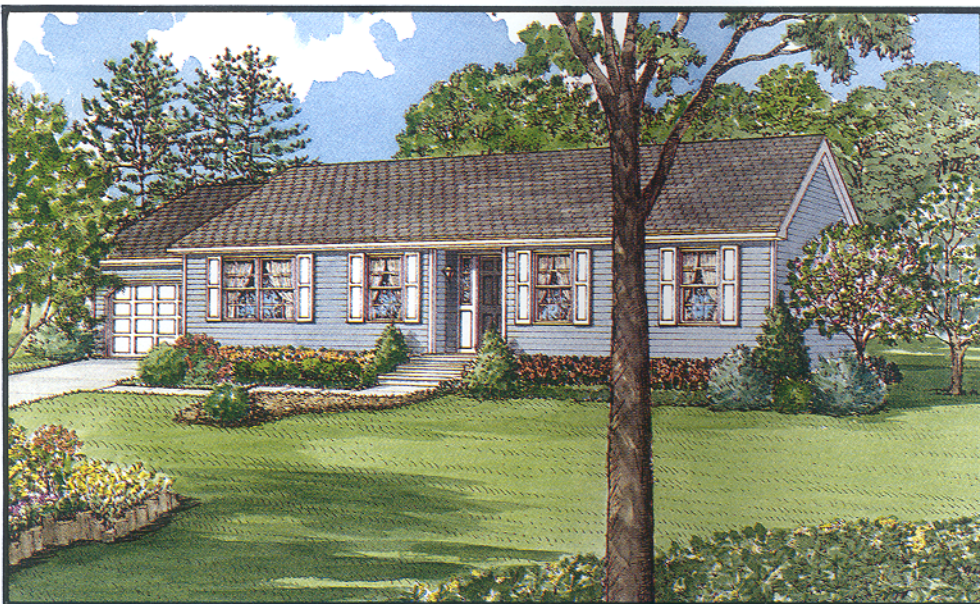
## The Vernon

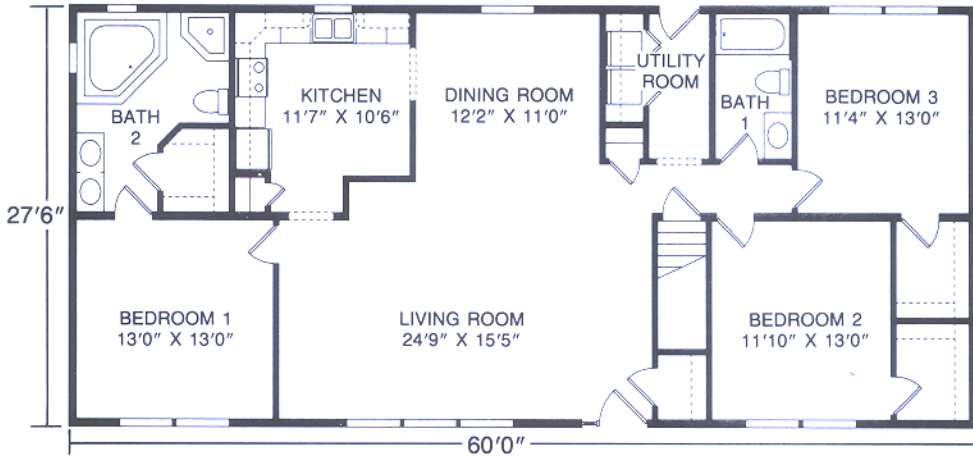
**Plan No. 350** ■ 1320 SQ. FT.  
Spacious, family living including snack bar, two full baths and utility closet. Also available in 26' width.



## The Jamestown

**Plan No. 362** ■ 1705 SQ. FT.  
Enjoy exceptional living with grand family room, formal living room, large kitchen with breakfast/snack bar, and master bedroom suite with private bath. Also available in 26' width.

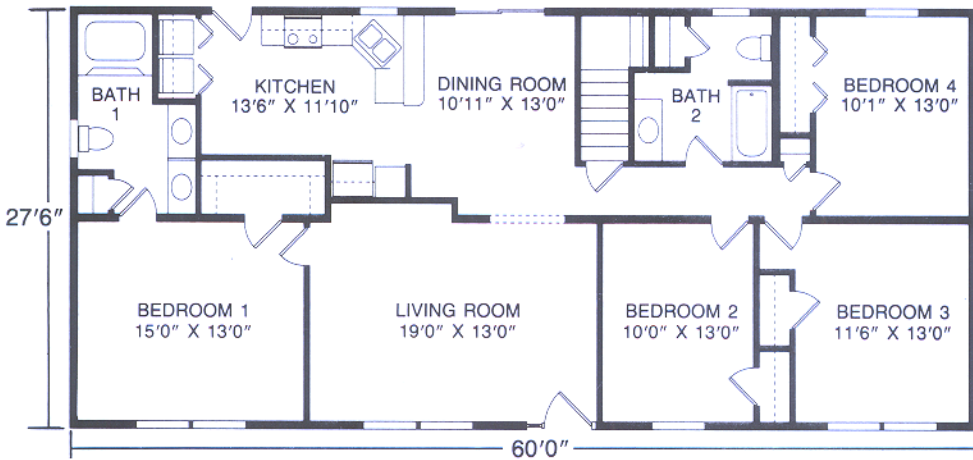




### The Clemson

Plan No. 360 ■ 1650 SQ. FT.

Enjoy the immense space created by the open living room and dining room. Features large master bedroom with elegant private bath, utility room and large bedroom walk-in closets. Also available in 26' width.



### The Cameron

Plan No. 361 ■ 1650 SQ. FT.

Spacious and welcoming, featuring kitchen with breakfast/snack bar, convenient utility closet, master bedroom with large walk-in closet and full bath with linen closet. Also available in 26' width.

Crawl space option available in most plans.

## MUNCY HOMES

1567 ROUTE 442, P.O. BOX 325 • MUNCY, PA 17756

(570) 546-2261

www.muncyhomes.com

MEMBER:



Due to our continuing program of Product Improvement, Plans, Specifications, Materials and Prices are subject to change without notice.

Renderings and floor plans are promotional illustrations that approximate size and may depict optional or suggested features.

5M SVP 3/01

### Your Builder/Developer

**PATRIOT HOME SALES, INC.**  
3517 Lincoln Highway East  
Kinzers, PA 17535  
717-442-8868  
FAX 717-442-8078

THE BUILDER/DEVELOPER IS AN INDEPENDENT BUSINESSMAN, NOT AN AGENT OF MUNCY HOMES. From time to time, Builder/Developer may perform service work at the request of Muncy Homes, but in doing so Builder/Developer is still an independent contractor and is alone responsible for the quality of his work. MUNCY HOMES SHALL HAVE NO RESPONSIBILITY OR LIABILITY FOR ANY ACT OR OMISSION OF BUILDER/DEVELOPER OR ANY MATERIAL PROVIDED BY BUILDER/DEVELOPER, UNDER ANY CIRCUMSTANCES.